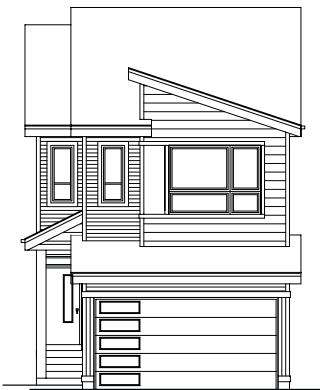


QUICK
POSSESSION

THE HALLADAY

1,934 SQ FT | 3 BED + FLEX | 2.5 BATH

2419 - 205 STREET NW



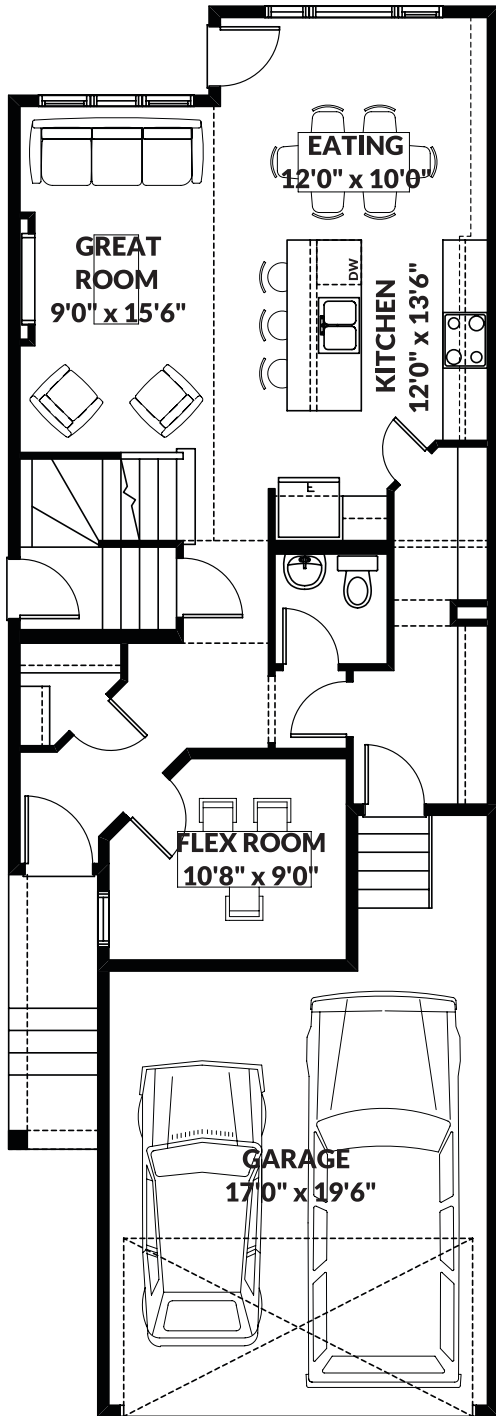
THIS FRONT DRIVE HOME FEATURES

- Quartz countertops throughout.
- Luxury Vinyl Plank throughout the main floor.
- Electric fireplace in great room with mantle and tiled surround.
- Chimney hood fan and built in microwave in the kitchen.
- Upgraded kitchen with custom glass cabinetry and pot & pan drawers.
- Walkthrough pantry with MDF shelving.
- Separate entrance with concrete sidewalk.

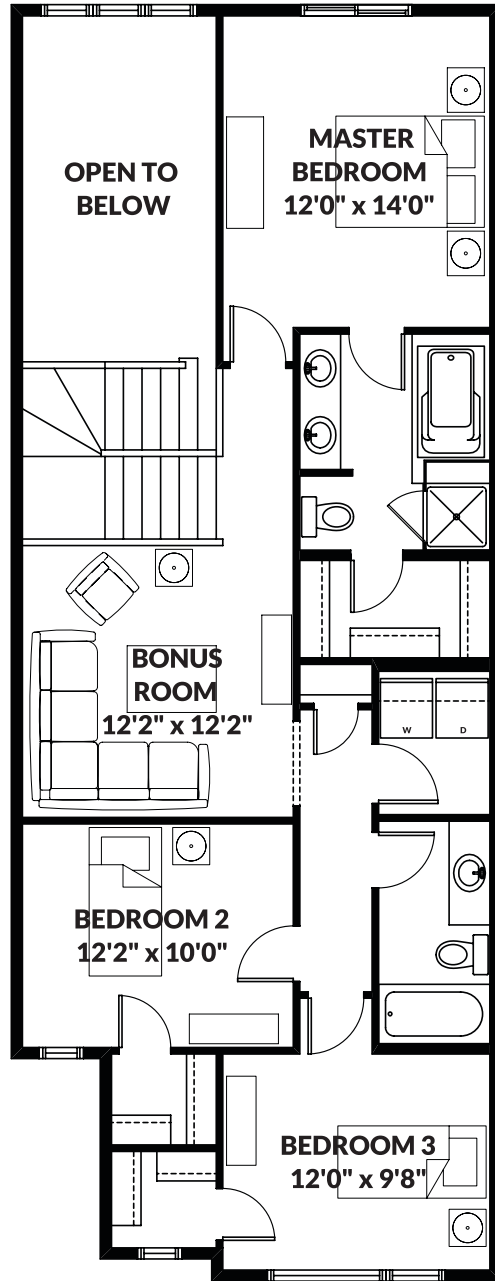
BETTER VALUE BY DESIGN
SINCE 1978 | HOMESBYAVI.COM

Homes by **AVI**

FLOOR PLAN



MAIN
856 SQ FT



UPPER
1,078 SQ FT

For more information or to book an appointment please contact us at **587.525.5200**

Prices are subject to change without notice. Actual floor plan, elevation, and square footage may not be exactly as shown. Square footage is measured to Alberta Building Code (ABC) regulations. Builder reserves the right to make changes without notice. E&OE.

Homes by **AVI**