

18'

THE FINN

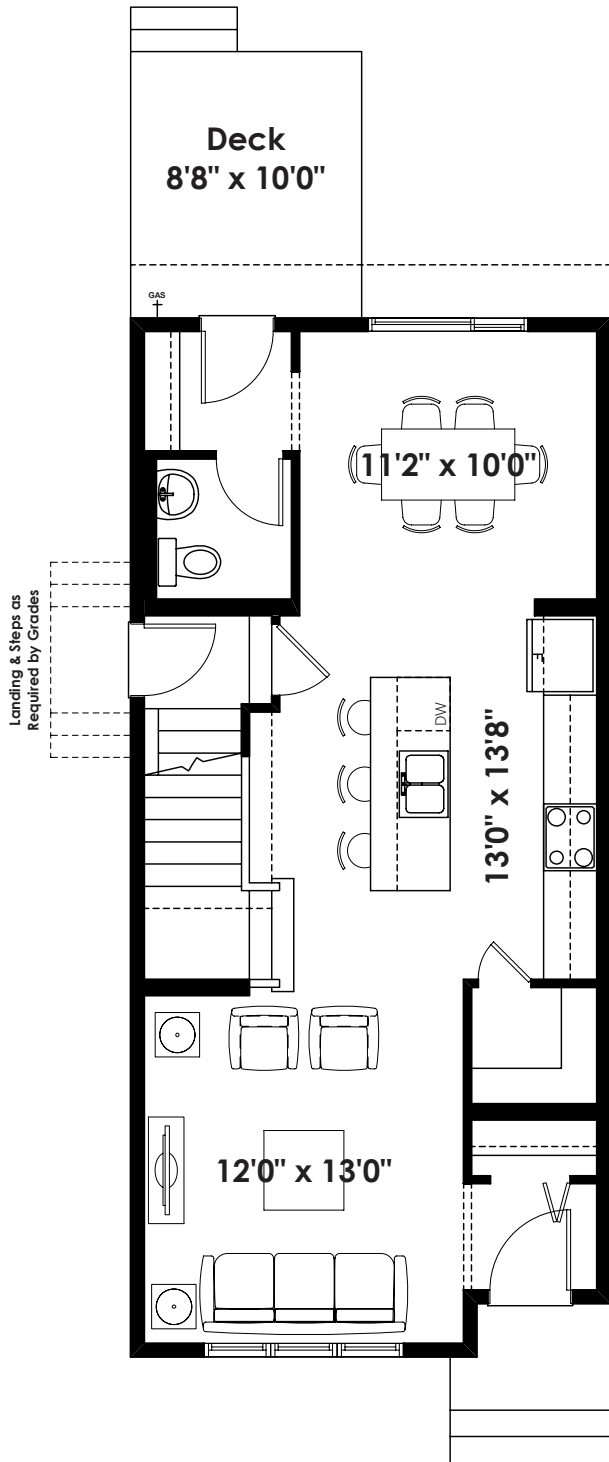
1,415+ SQ FT | 3 BED | 2.5 BATH



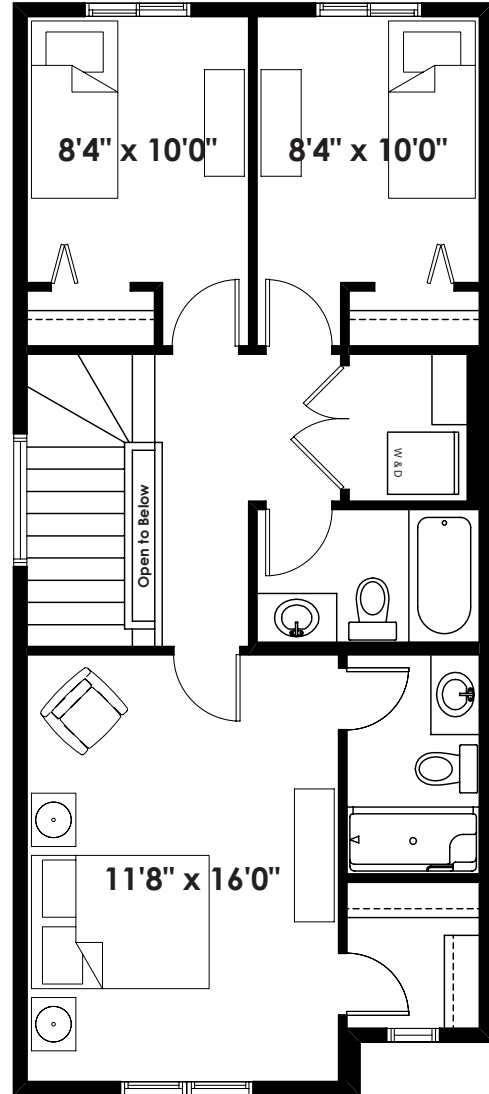
BETTER VALUE BY DESIGN
SINCE 1978 | HOMESBYAVI.COM

Homes by **AVI**

BASE FLOOR PLAN

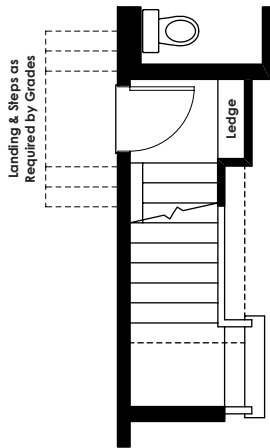


MAIN
692 SQ FT

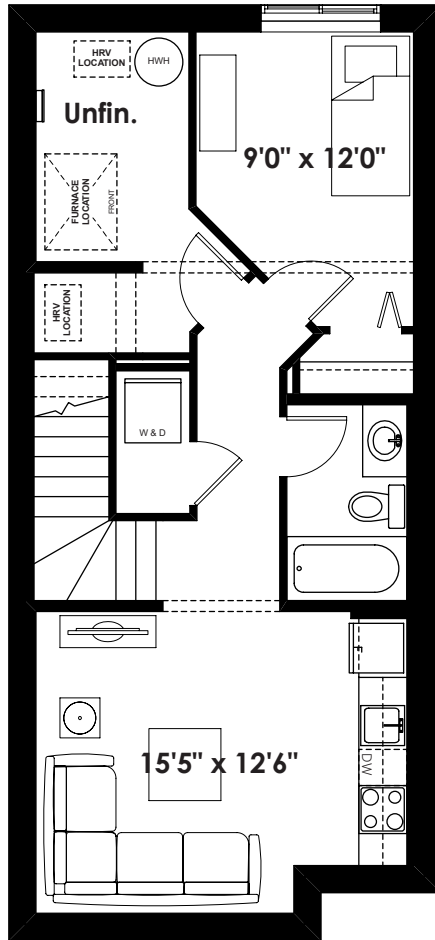


UPPER
723 SQ FT

FLOOR PLAN OPTIONS

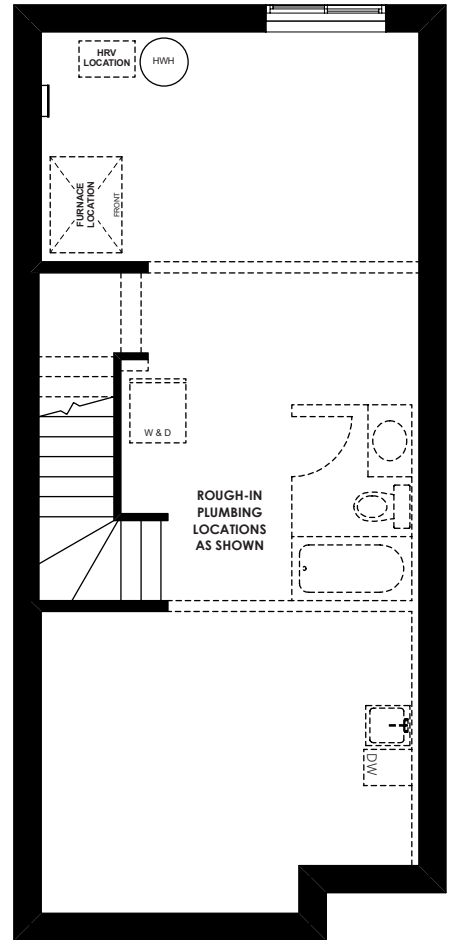


**Partial Main Floor
for Side Entry
(Door Removed)**



**Optional Basement Suite Layout
474 Sq. Ft. (Finished)**

BASEMENT SUITE MAY NOT CONFORM
TO ALL MUNICIPALITIES;
LAND USE BY-LAW & CODE MUST BE
REVIEWED PRIOR TO ACCEPTANCE



**Standard Unfinished Basement
(9' Foundation Walls)**