

QUICK
POSSESSION

THE JEFFERSON

2,340 SQ FT | 3 BED | 2.5 BATH

2245 - 1932A STREET NW



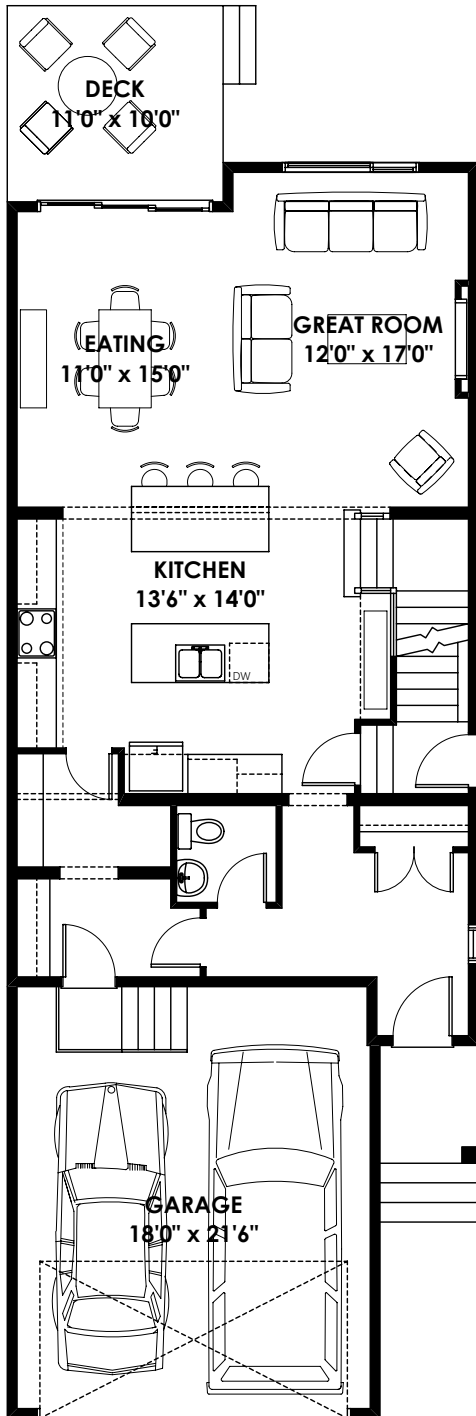
THIS FRONT DRIVE HOME FEATURES

- Double island in Kitchen
- Side entry
- 9' main floor and basement
- Basement suite roughed in
- Deck included
- Extra windows in bonus room

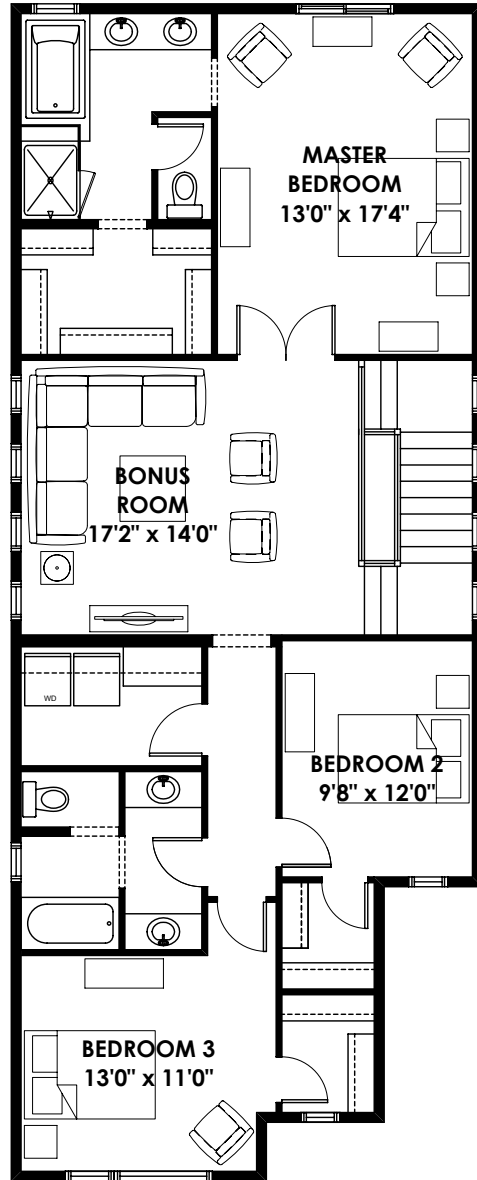
BETTER VALUE BY DESIGN
SINCE 1978 | HOMESBYAVI.COM

Homes by **AVI**

FLOOR PLAN



MAIN
1,003 SQ FT



UPPER
1,337 SQ FT

For more information or to book an appointment please contact us at **587.525.5089**

Prices are subject to change without notice. Actual floor plan, elevation, and square footage may not be exactly as shown. Square footage is measured to Alberta Building Code (ABC) regulations. Builder reserves the right to make changes without notice. E&OE.

Homes by **AVI**