

QUICK
POSSESSION

THE SASHA

1726 SQ FT | 3 BED | 2.5 BATH

20732 - 24 AVE NW



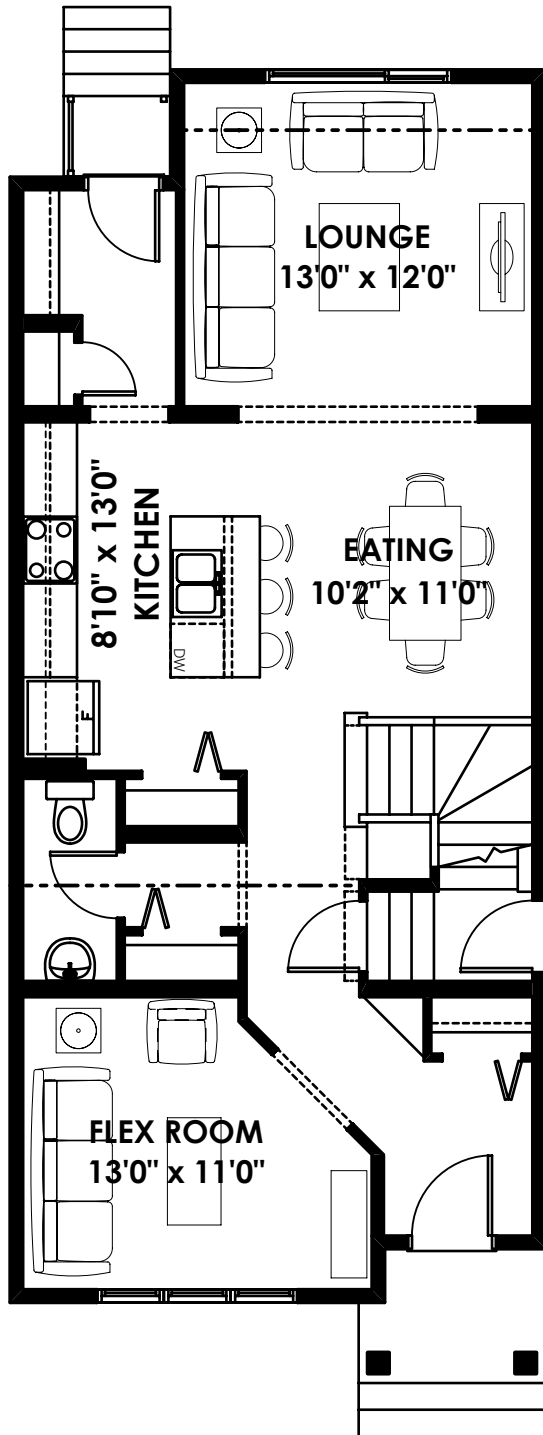
THIS LANED HOME FEATURES

- Quartz countertops throughout
- 9' main floor ceilings
- Luxury Vinyl Plank throughout the main floor
- Pot and pan drawers in the kitchen
- 2 bedroom basement suite possible
- Double detached garage
- Full landscaping

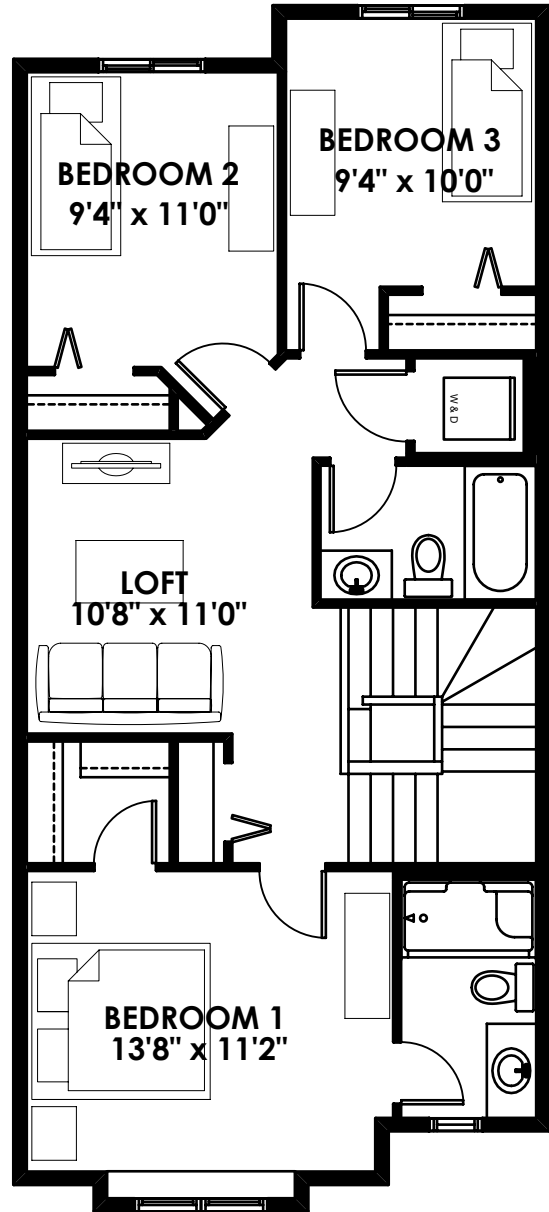
BETTER VALUE BY DESIGN
SINCE 1978 | HOMESBYAVI.COM

Homes by **AVI**

FLOOR PLAN



MAIN
1726 SQ FT



UPPER
842 SQ FT

For more information or to book an appointment please contact us at **587.525.5094**

Prices are subject to change without notice. Actual floor plan, elevation, and square footage may not be exactly as shown. Square footage is measured to Alberta Building Code (ABC) regulations. Builder reserves the right to make changes without notice. E&OE.

Homes by **AVI**