

QUICK
POSSESSION

THE GREGORY

1750 SQ FT | 4 BED | 3 BATH

7137 52 AVE



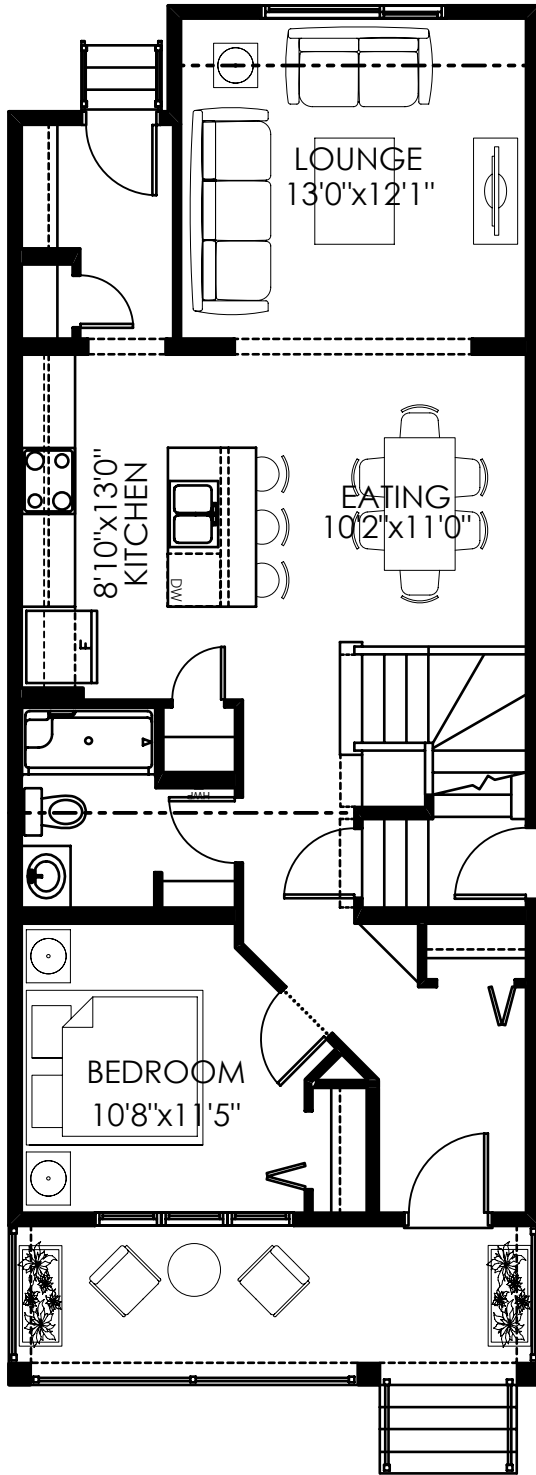
THIS LANED HOME FEATURES

- Double detached garage
- Main floor bedroom with full bath
- Front landscaping
- Side entrance
- Quartz countertops throughout
- LVP flooring throughout the main floor
- Rear deck with BBQ gas line

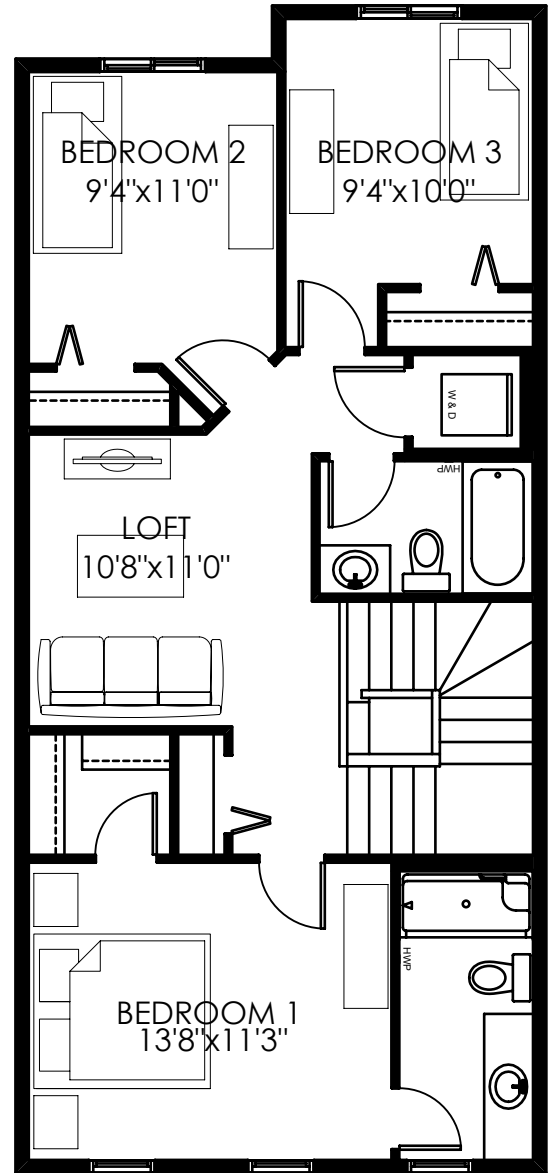
BETTER VALUE BY DESIGN
SINCE 1978 | HOMESBYAVI.COM

Homes by **AVI**

FLOOR PLAN



MAIN
896 SQ FT



UPPER
854 SQ FT

For more information or to book an appointment please contact us at **587.525.5091**

Prices are subject to change without notice. Actual floor plan, elevation, and square footage may not be exactly as shown. Square footage is measured to Alberta Building Code (ABC) regulations. Builder reserves the right to make changes without notice. E&OE.

Homes by **AVI**