

SHOW  
HOME

# THE LINCOLN

2,544 SQ FT | 4 BED | 3.5 BATH

884 LANGHOLM DRIVE SE, AIRDRIE



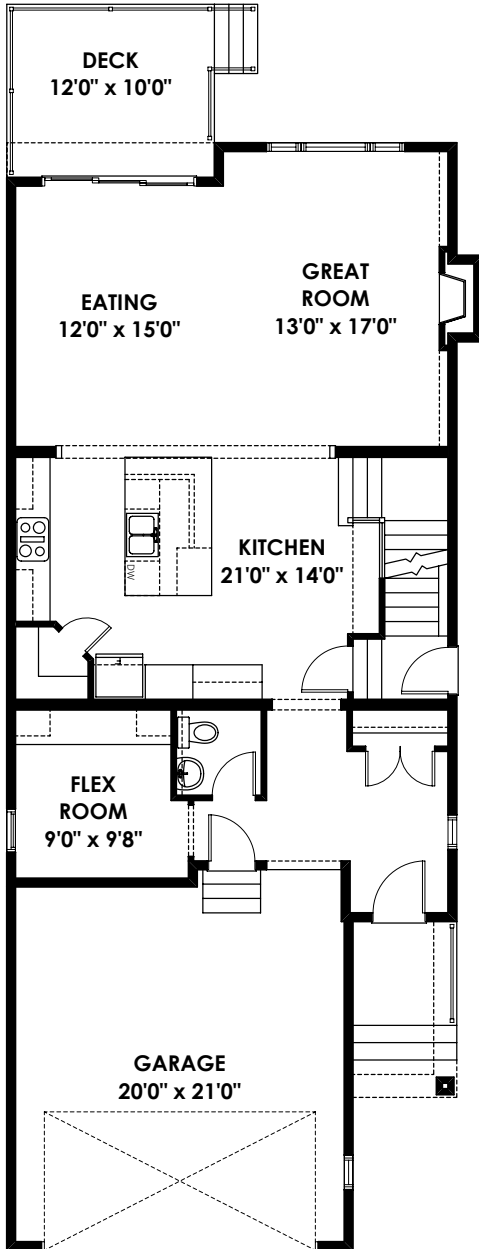
## THIS FRONT DRIVE HOME FEATURES

- 10' Ceiling height on main floor with elegant living room and functional flex room
- Full-equipped kitchen featuring stunning cabinetry, quartz countertops, and high-end stainless steel appliances
- Well-designed upper floor with open bonus room, three large bedrooms and two bathrooms
- Large main bedroom with luxurious 5-piece ensuite, including tiled shower, soaker tub, and generously sized walk-in closet
- Large developed basement completed with 9' foundation walls and side entry

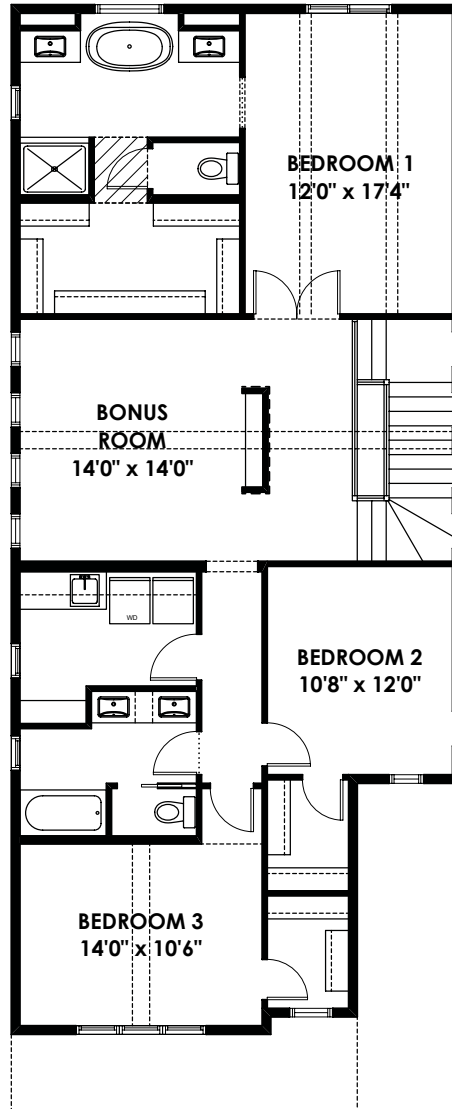
BETTER VALUE BY DESIGN  
SINCE 1978 | HOMESBYAVI.COM

Homes by **AVI**

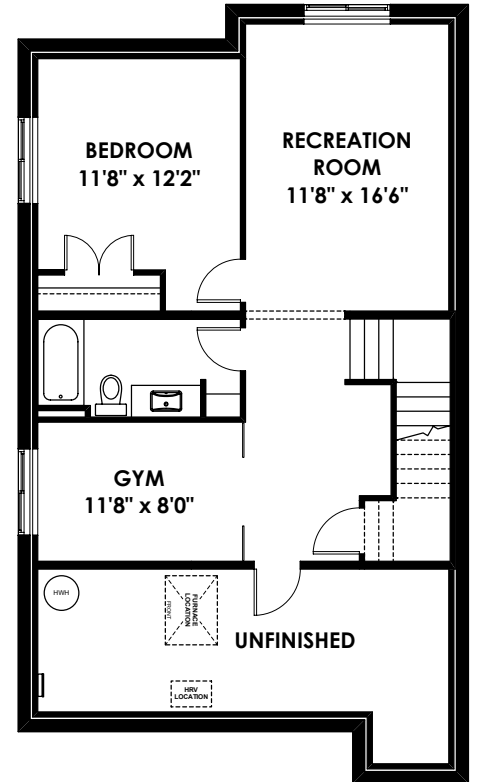
## FLOOR PLAN



**MAIN**  
1,099 SQ FT



**UPPER**  
1,445 SQ FT



**BASEMENT**  
697 SQ FT

For more information or to book an appointment please contact us at **403.536.7203**

Prices are subject to change without notice. Actual floor plan, elevation, and square footage may not be exactly as shown. Square footage is measured to Alberta Building Code (ABC) regulations. Builder reserves the right to make changes without notice. E&OE.

Homes by **AVI**