

QUICK
POSSESSION

THE GABRIEL

2,059 SQ FT | 4 BED | 3 BATH

30 WALCREST MANOR SE



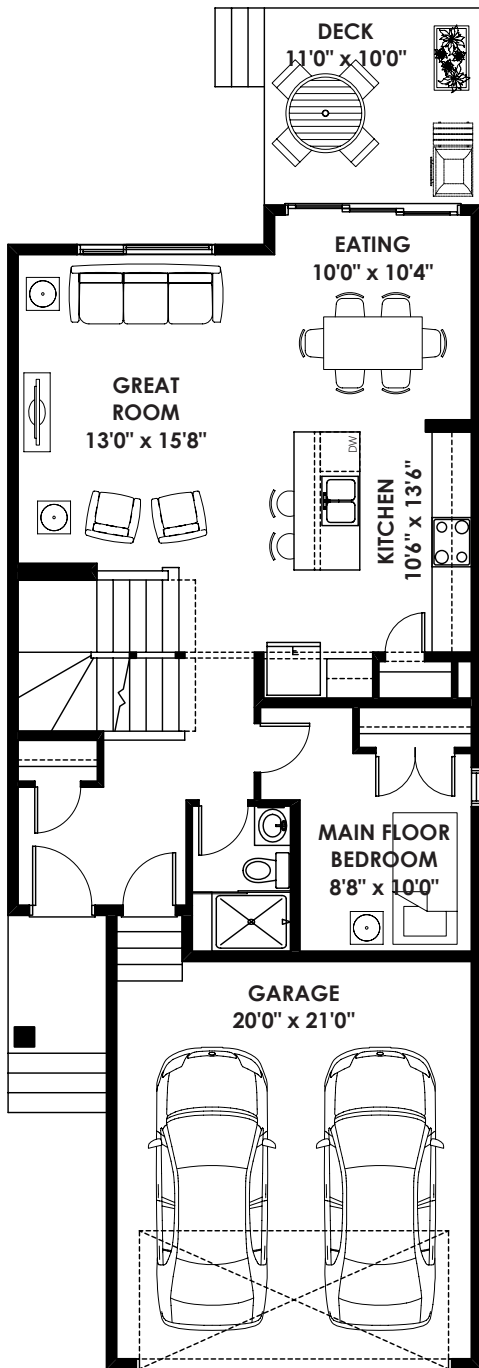
THIS FRONT DRIVE HOME FEATURES

- Main Floor bedroom with 3 piece bathroom, including shower stall
- Extended kitchen and dining room
- Private upper floor pocket office
- Upgraded ensuite
- Upgrade main bath
- Cabinets to ceiling with chimney hood fan and built in microwave
- Gas lines included for future gas stove and BBQ

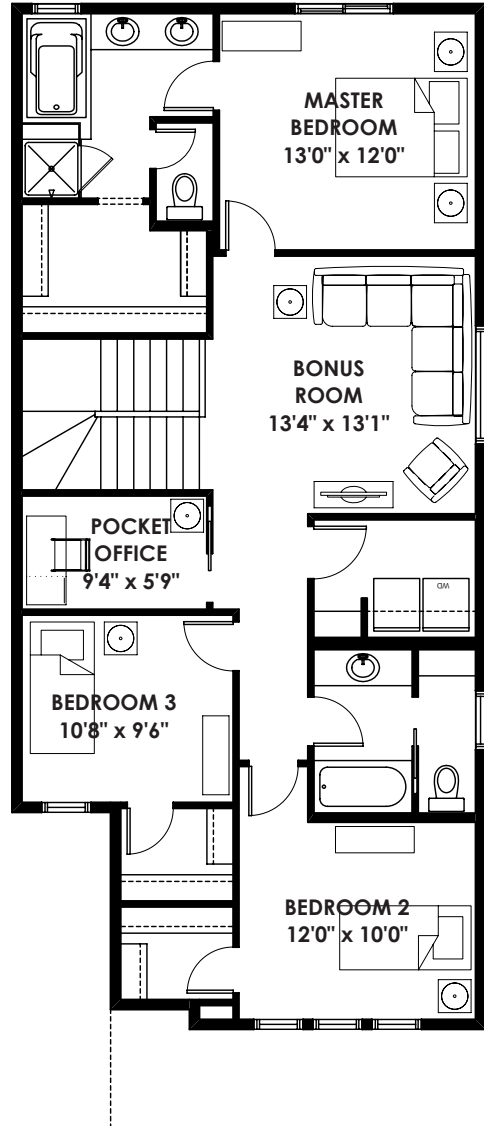
BETTER VALUE BY DESIGN
SINCE 1978 | HOMESBYAVI.COM

Homes by **AVI**

FLOOR PLAN



MAIN
873 SQ FT



UPPER
1,186 SQ FT

For more information or to book an appointment please contact us at **403.536.7272**

Prices are subject to change without notice. Actual floor plan, elevation, and square footage may not be exactly as shown. Square footage is measured to Alberta Building Code (ABC) regulations. Builder reserves the right to make changes without notice. E&OE.

Homes by **AVI**