

18'

THE SASHA

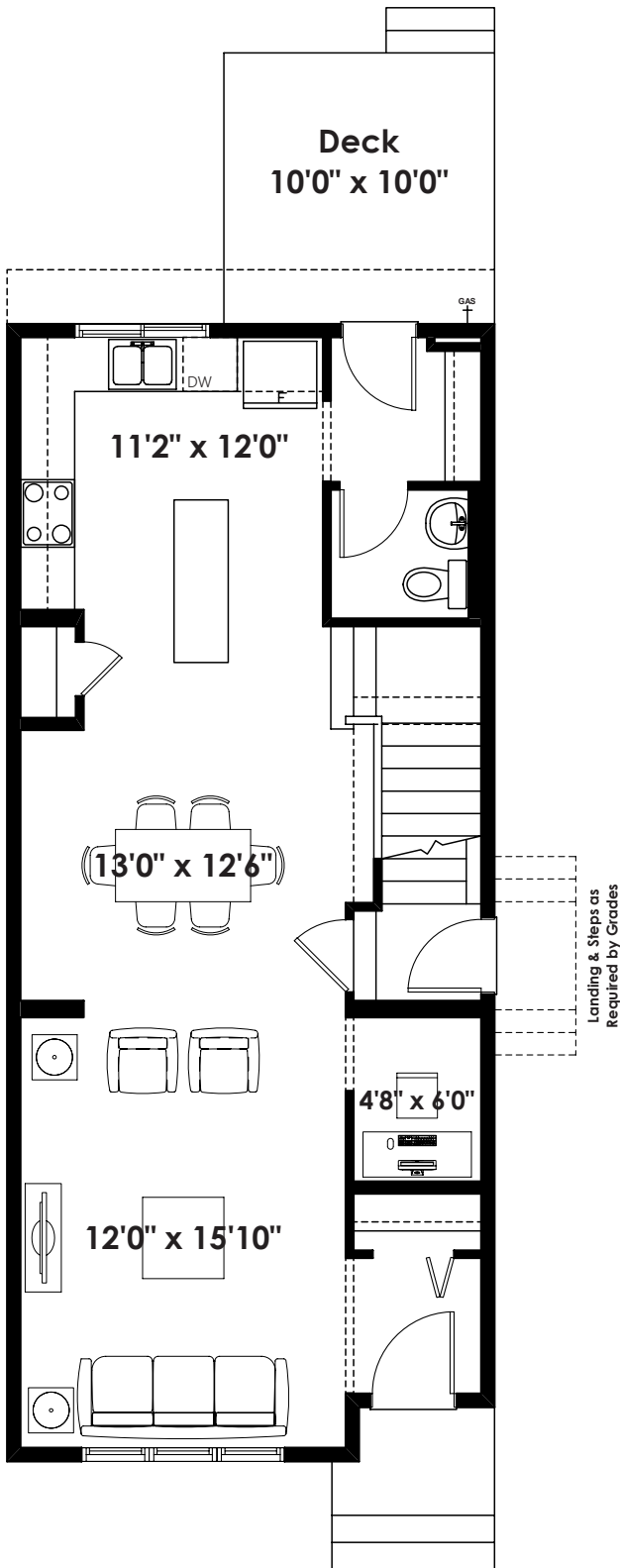
1,523+ SQ FT | 3 BED | 2.5 BATH



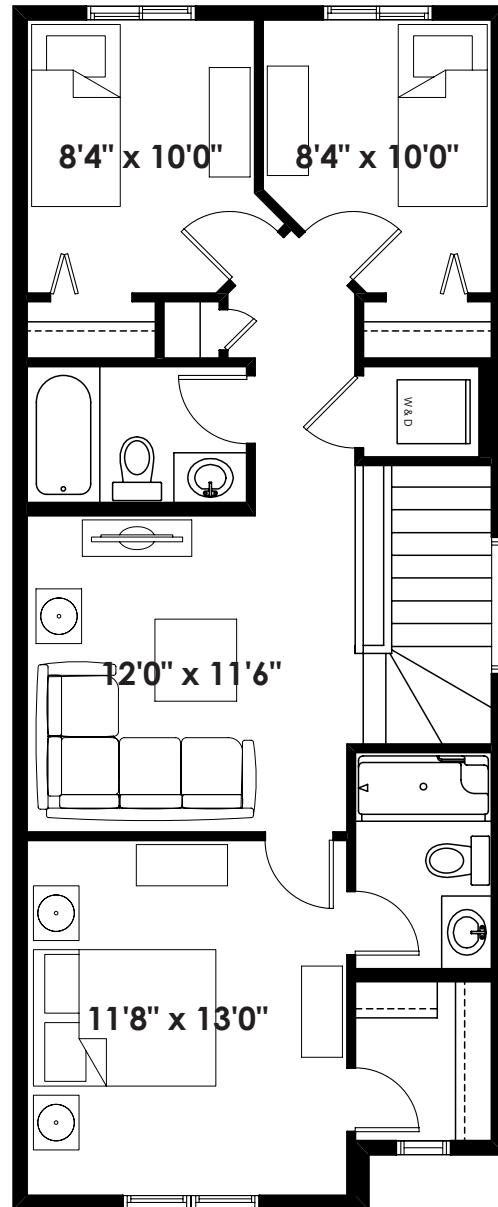
BETTER VALUE BY DESIGN
SINCE 1978 | HOMESBYAVI.COM

Homes by **AVI**

BASE FLOOR PLAN

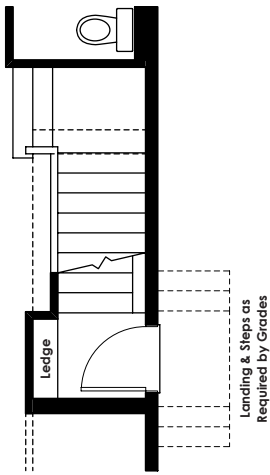


MAIN
746 SQ FT

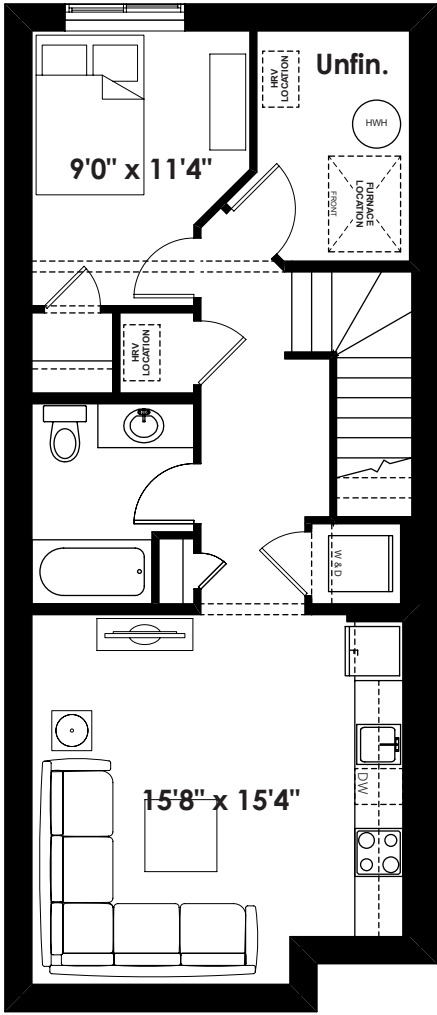


UPPER
777 SQ FT

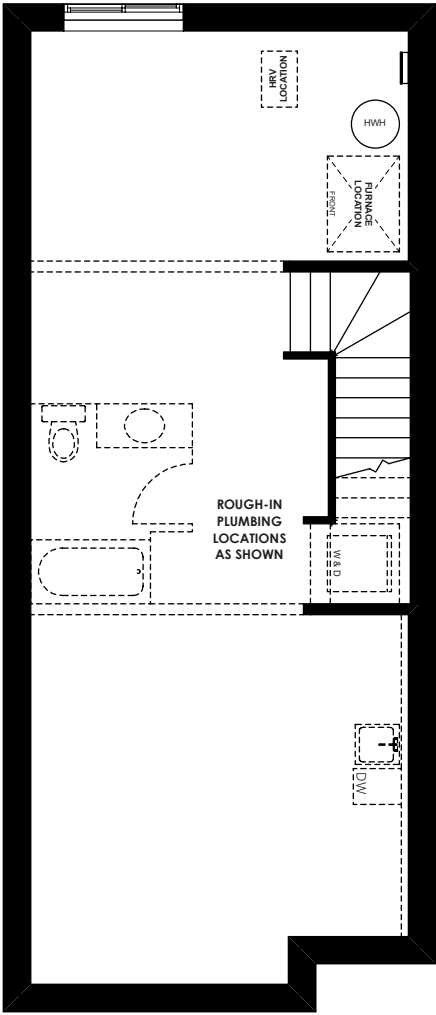
FLOOR PLAN OPTIONS



Partial Main Floor for Side Entry (Door Removed)



Optional Basement Suite Layout 538 Sq. Ft. (Finished)



Standard Unfinished Basement (9' Foundation Walls)