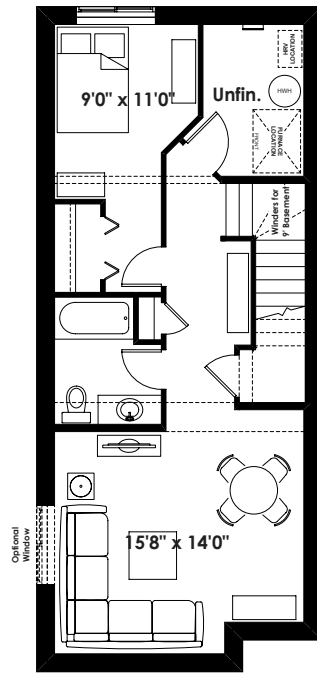


FLOOR PLAN OPTIONS

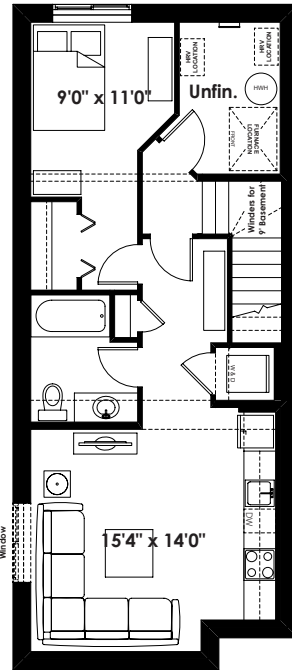
18'

# THE SASHA

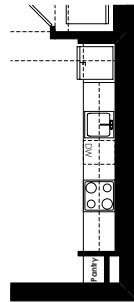
1,523+ SQ FT | 3 BED | 2.5 BATH



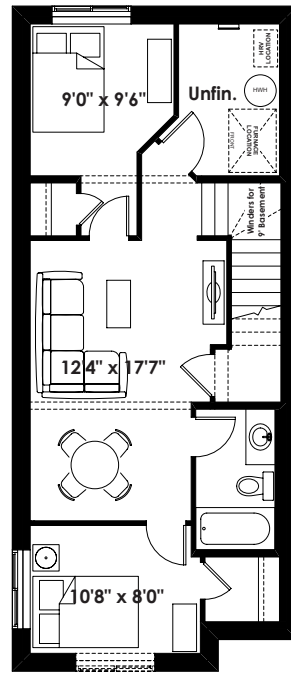
Optional 1 Bedroom  
Basement Room Layout  
538 Sq. Ft. (Finished)



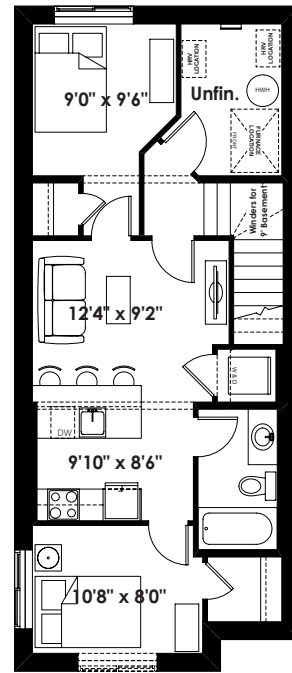
Optional 1 Bedroom  
Basement Suite Layout  
554 Sq. Ft. (Finished;  
Must Add Optional Side Entry)



Partial 1 Bedroom  
Basement Suite  
Layout for  
Flat Front Elevation  
(Adds 10 Sq. Ft.)



Optional 2 Bedroom  
Basement Room Layout  
538 Sq. Ft. (Finished)



Optional 2 Bedroom  
Basement Suite Layout  
554 Sq. Ft. (Finished;  
Must Add Optional Side Entry)



Prices are subject to change without notice. Actual floor plan, elevation, and square footage may not be exactly as shown. Square footage is measured to Alberta Building Code (ABC) regulations. Builder reserves the right to make changes without notice. E&OE.



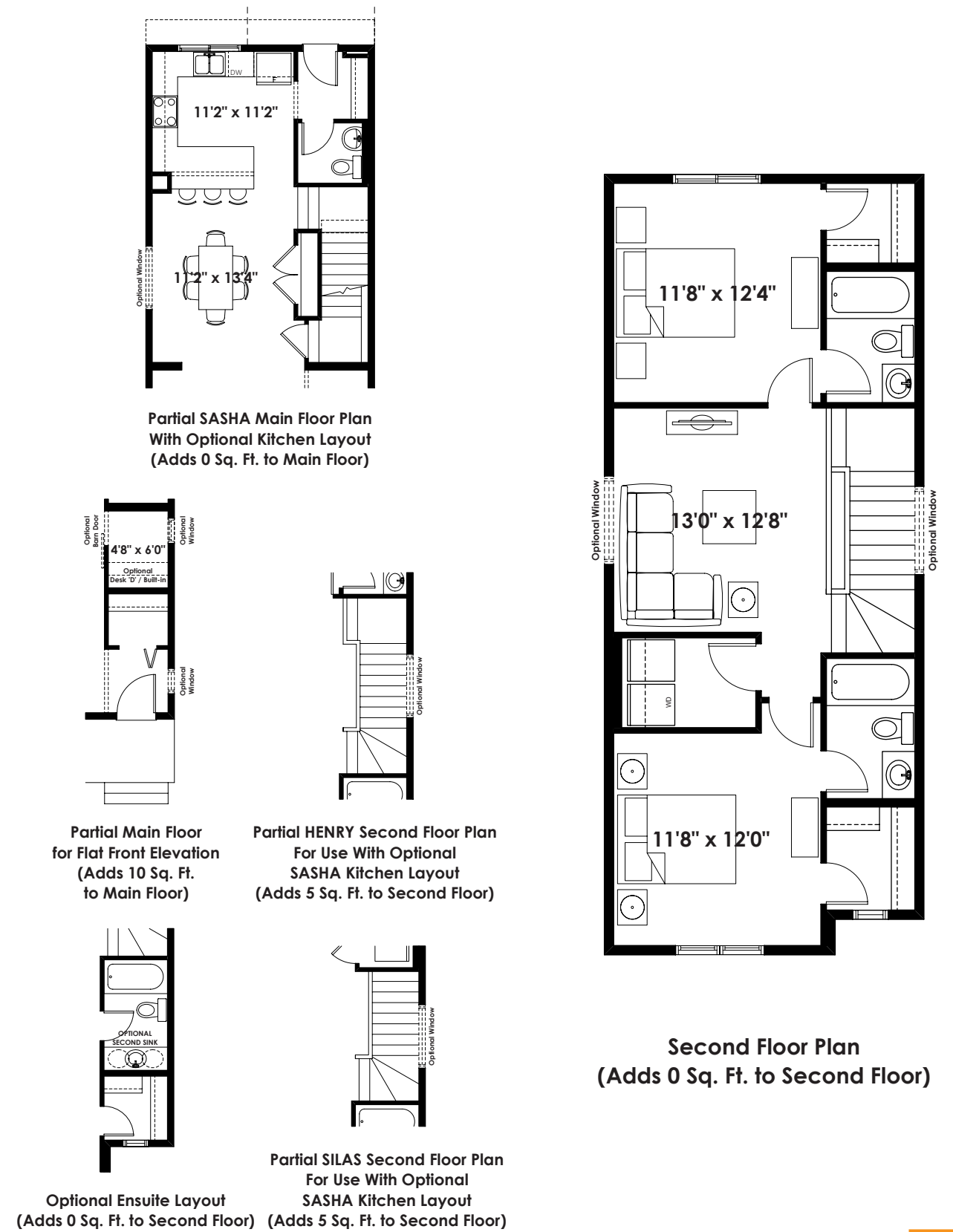
BETTER VALUE BY DESIGN  
SINCE 1978 | HOMESBYAVI.COM



**BASE FLOOR PLAN**



**FLOOR PLAN OPTIONS**



ADDITIONAL  
OPTIONS