

18'

THE SASHA

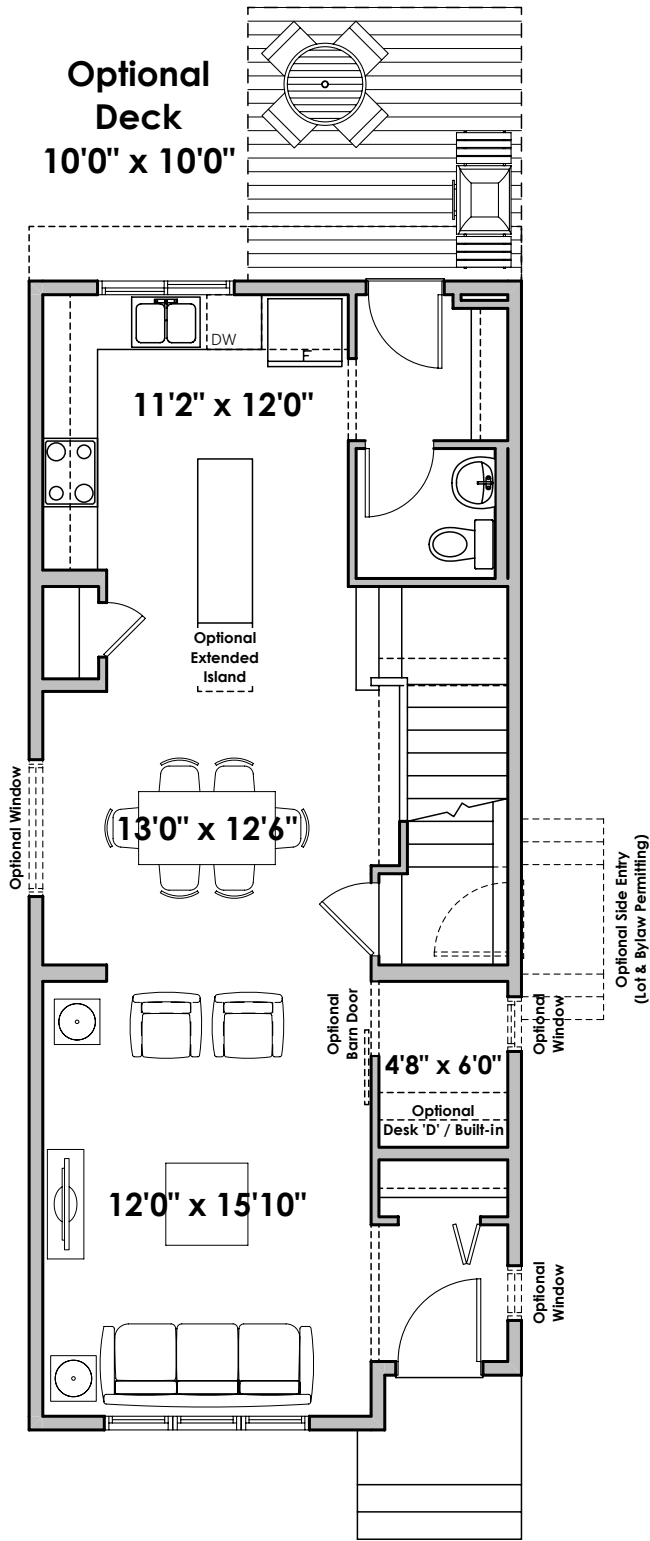
1,523+ SQ FT | 3 BED | 2.5 BATH



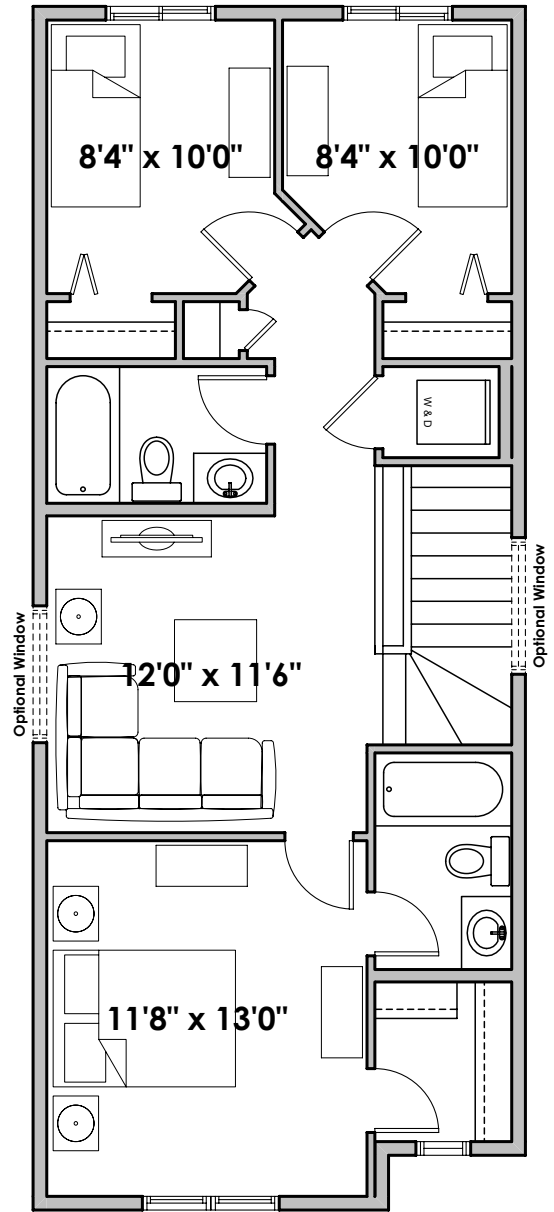
BETTER VALUE BY DESIGN
SINCE 1978 | HOMESBYAVI.COM

Homes by **AVI**

BASE FLOOR PLAN

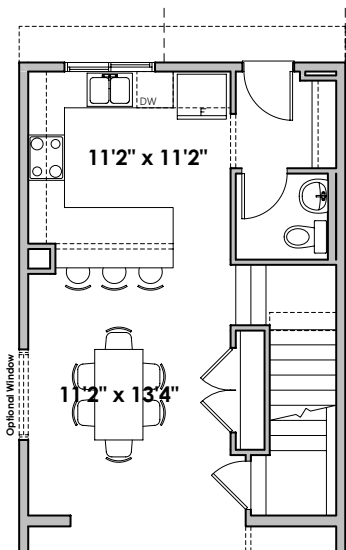


MAIN
746 SQ FT

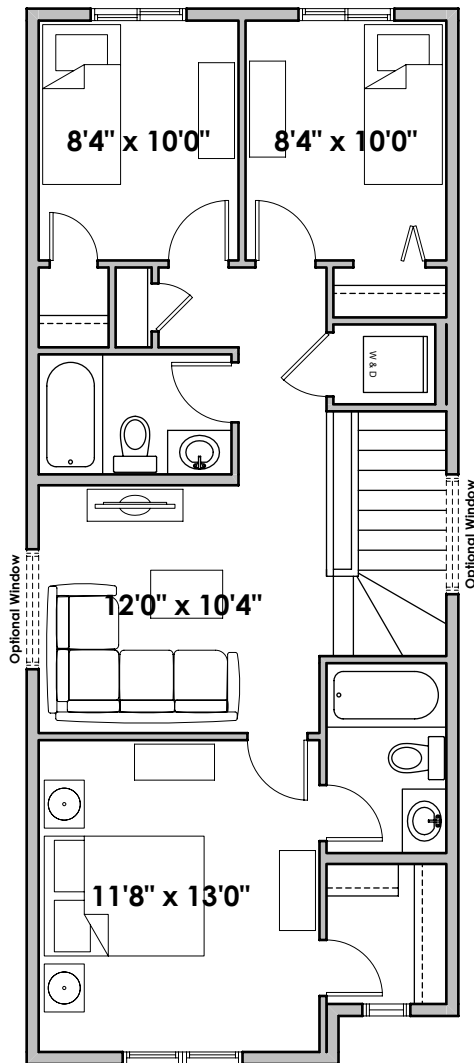


UPPER
777 SQ FT

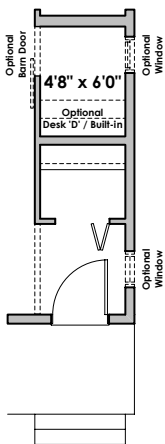
FLOOR PLAN OPTIONS



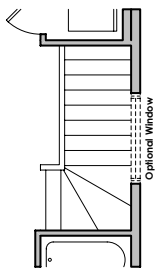
**Partial SASHA Main Floor Plan
With Optional Kitchen Layout
(Adds 0 Sq. Ft. to Main Floor)**



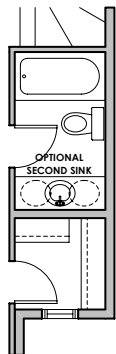
**SEALY
Second Floor Plan
(Adds 0 Sq. Ft. to Second Floor)**



**Partial Main Floor
for Flat Front Elevation
(Adds 10 Sq. Ft.
to Main Floor)**



**Partial SILAS & SEALY Second
Floor Plan For Use With Optional
SASHA Kitchen Layout
(Adds 5 Sq. Ft. to Second Floor)**

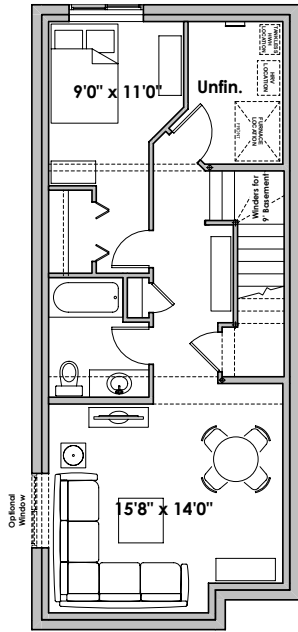


**Optional Ensuite Layout
(Adds 0 Sq. Ft. to Second Floor)**

ADDITIONAL
OPTIONS

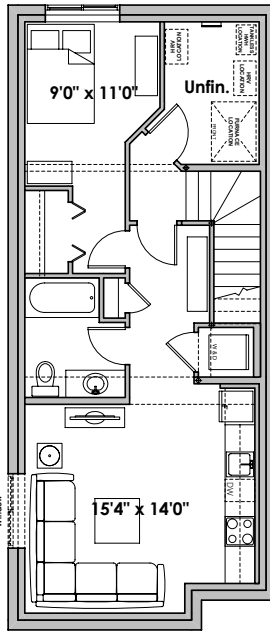
AVAILABILITY OF OPTIONAL WINDOWS & FIREPLACES IS SUBJECT TO PARTYWALLS & BUILDING CODES.

FLOOR PLAN OPTIONS



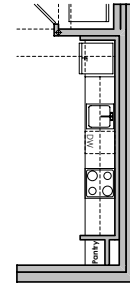
SASHA

**Optional 1 Bedroom
Basement Room Layout
538 Sq. Ft. (Finished)**



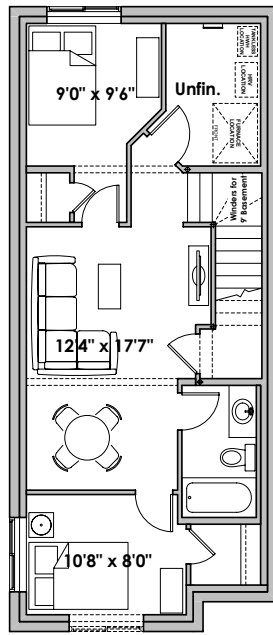
SASHA

**Optional 1 Bedroom
Basement Suite Layout
554 Sq. Ft. (Finished;
Includes 9' Foundation Walls)**



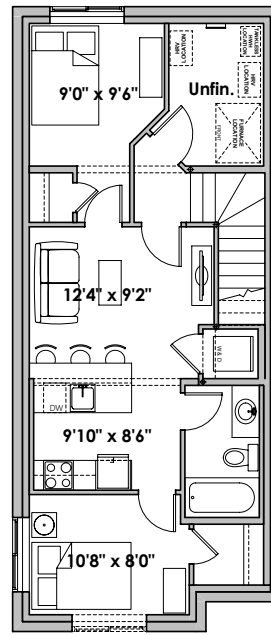
**Partial 1 Bedroom
Basement Suite
Layout for
Flat Front Elevation
(Adds 10 Sq. Ft.)**

BASEMENT SUITE MAY NOT CONFORM
TO ALL MUNICIPALITIES;
LAND USE BY-LAW & CODE MUST BE
REVIEWED PRIOR TO ACCEPTANCE



SASHA

**Optional 2 Bedroom
Basement Room Layout
538 Sq. Ft. (Finished)**



SASHA

**Optional 2 Bedroom
Basement Suite Layout
554 Sq. Ft. (Finished;
Includes 9' Foundation Walls)**

BASEMENT SUITE MAY NOT CONFORM
TO ALL MUNICIPALITIES;
LAND USE BY-LAW & CODE MUST BE
REVIEWED PRIOR TO ACCEPTANCE

AVAILABILITY OF OPTIONAL WINDOWS & FIREPLACES IS SUBJECT TO PARTYWALLS & BUILDING CODES.

Prices are subject to change without notice. Actual floor plan, elevation, and square footage may not be exactly as shown. Square footage is measured to Alberta Building Code (ABC) regulations. Builder reserves the right to make changes without notice. E&OE. MAR-25-2026.

Homes by **AVI**