

18'

THE FINN

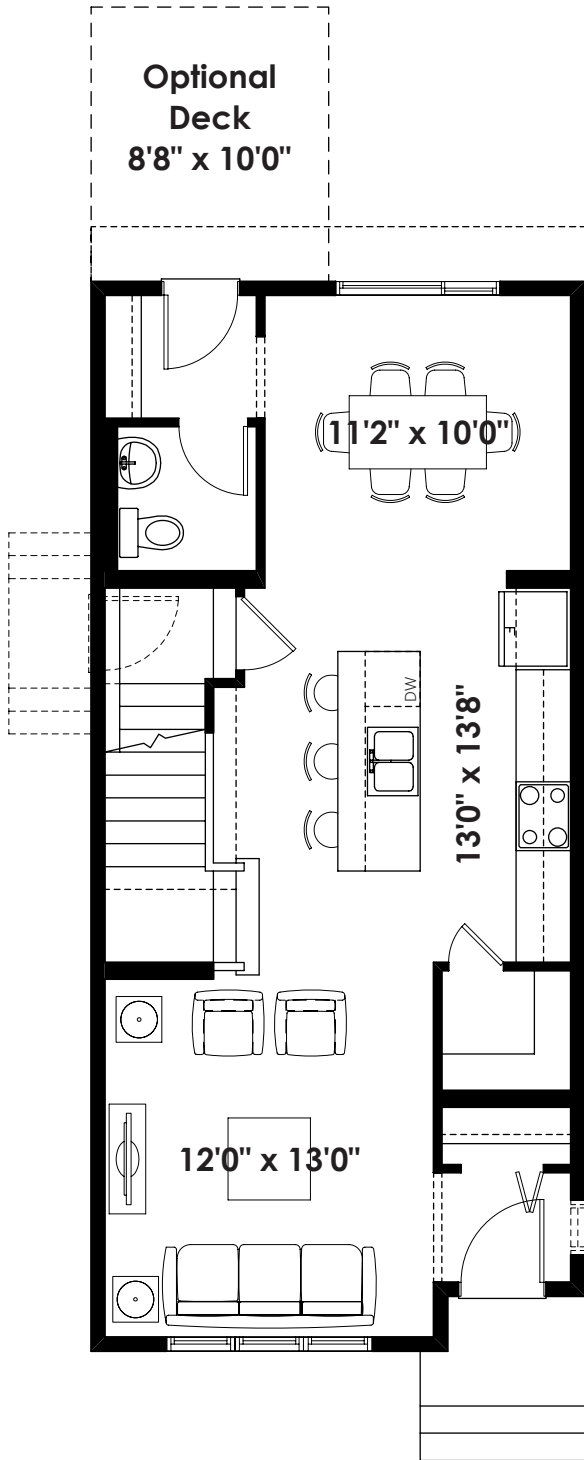
1,415+ SQ FT | 3 BED | 2.5 BATH



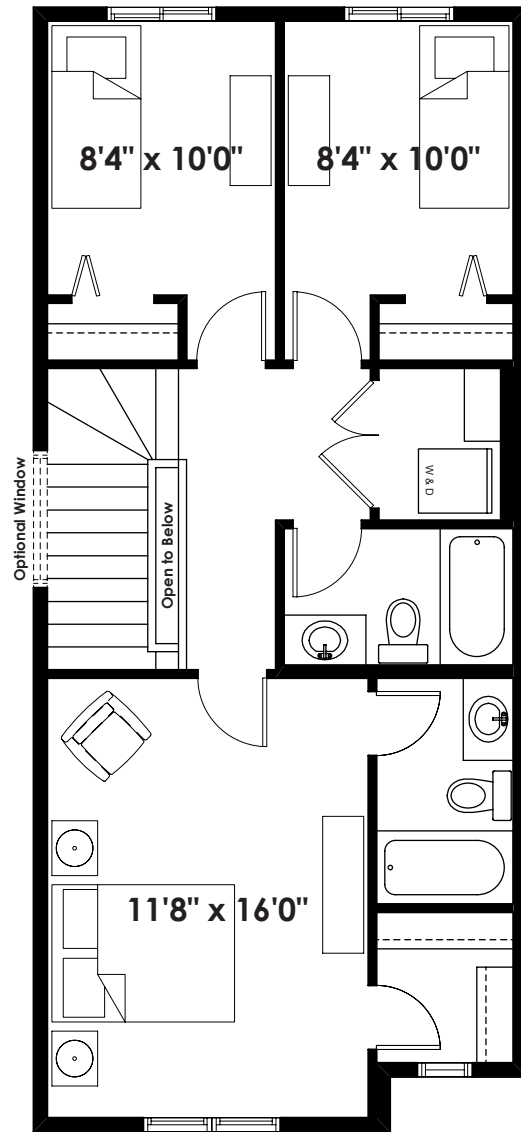
BETTER VALUE BY DESIGN
SINCE 1978 | HOMESBYAVI.COM

Homes by **AVI**

BASE FLOOR PLAN

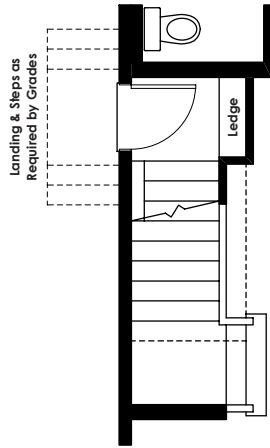


MAIN
692 SQ FT

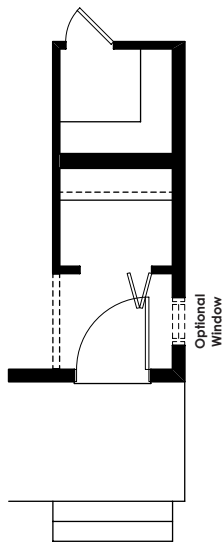


UPPER
723 SQ FT

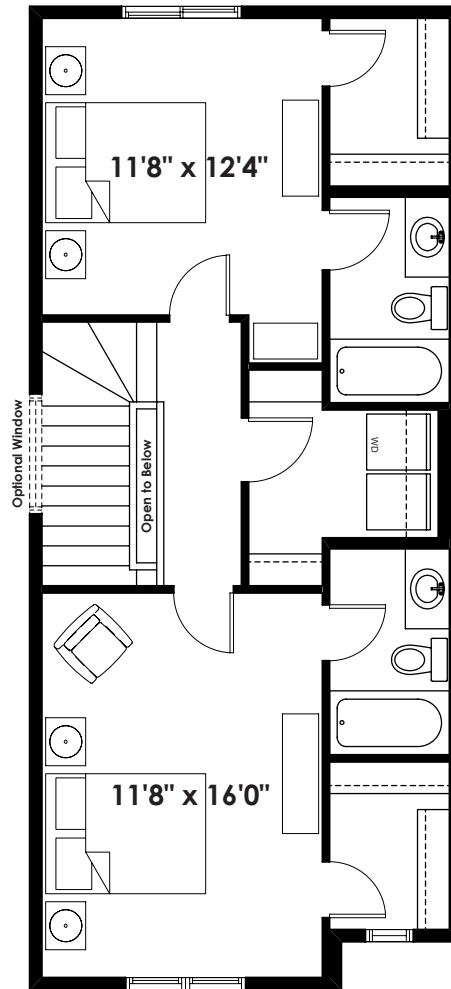
FLOOR PLAN OPTIONS



**Partial Main Floor
for Side Entry
(Door Removed)**



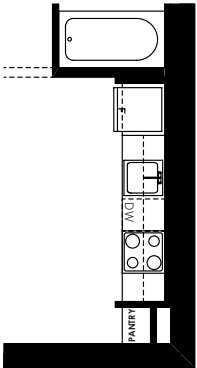
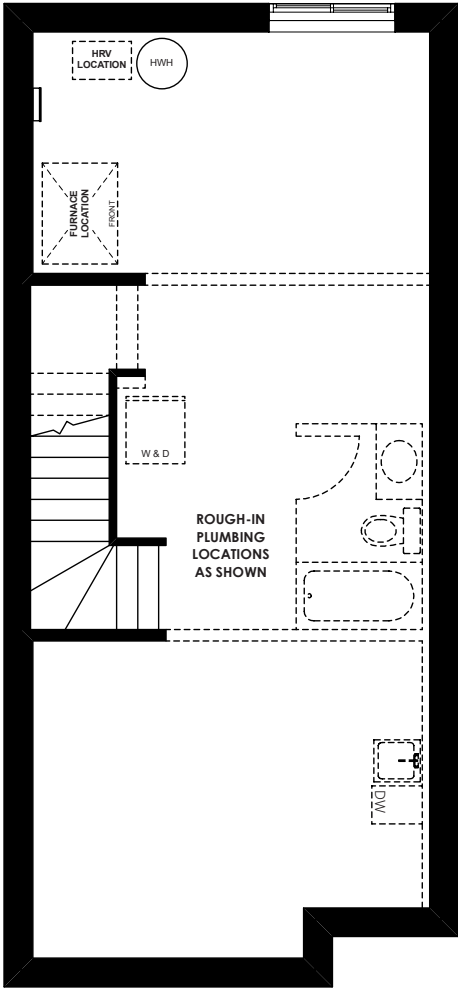
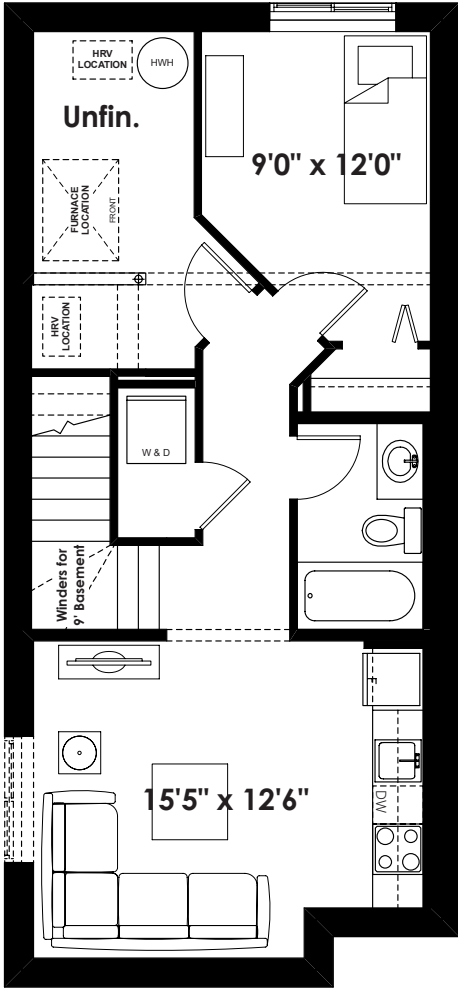
**Partial Main Floor
for Flat Front Elevation
(Adds 10 Sq. Ft.
to Main Floor)**



**LEVI
Second Floor Plan
(Adds 0 Sq. Ft. to Second Floor)**

ADDITIONAL
OPTIONS

FLOOR PLAN OPTIONS



Partial Basement Suite
Layout for
Flat Front Elevation
(Adds 10 Sq. Ft.)

Optional Basement Suite Layout
474 Sq. Ft. (Finished)

Standard Unfinished Basement
(9' Foundation Walls)

BASEMENT SUITE MAY NOT CONFORM
TO ALL MUNICIPALITIES;
LAND USE BY-LAW & CODE MUST BE
REVIEWED PRIOR TO ACCEPTANCE