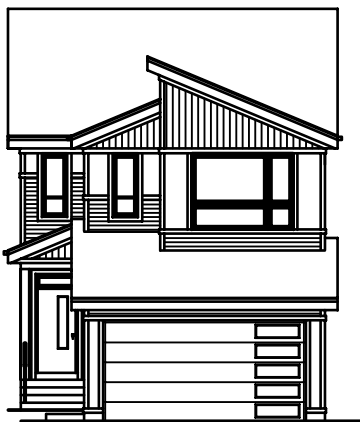


QUICK  
POSSESSION

# THE JEFFERSON

2,340 SQ FT | 3 BED | 2.5 BATH

17307-2 STREET NW



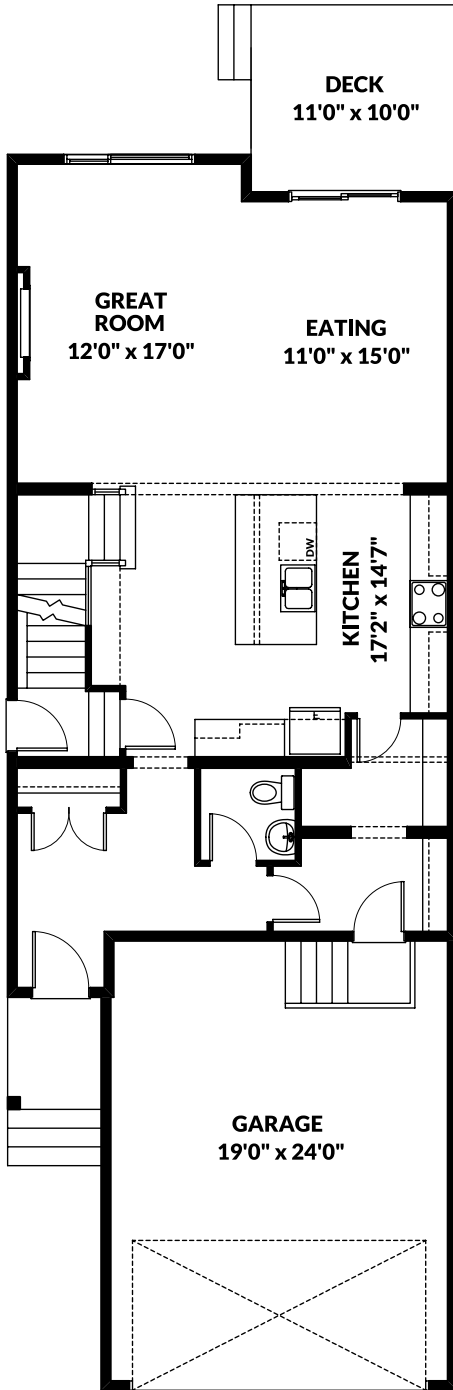
## THIS FRONT DRIVE HOME FEATURES

- Iron spindles on staircase.
- Side entry door to basement.
- Walk in closets in all bedrooms.
- LVP flooring entire main floor.
- Quartz countertops throughout.
- Stainless steel appliance package in kitchen.
- Two vanities in kids bathroom.
- Rear deck.

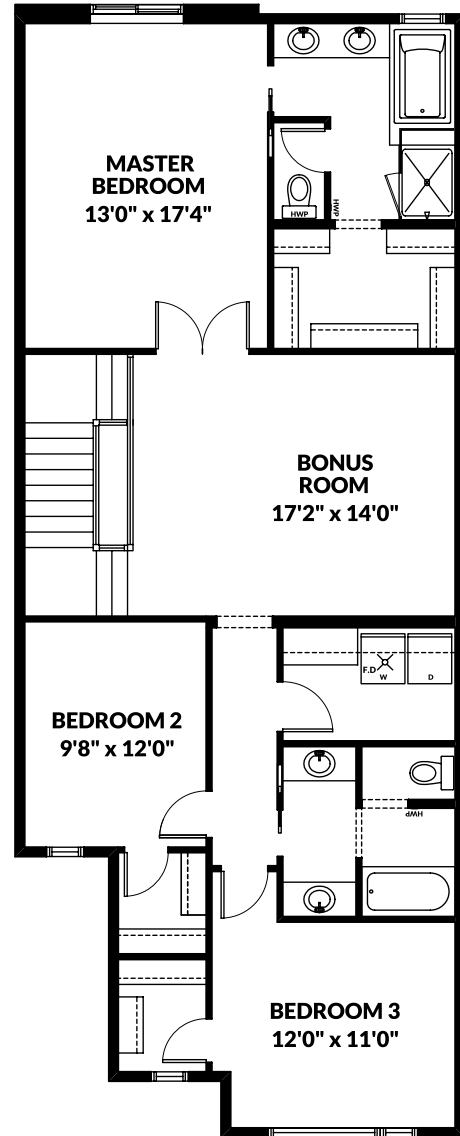
BETTER VALUE BY DESIGN  
SINCE 1978 | HOMESBYAVI.COM

Homes by **AVI**

# FLOOR PLAN



**MAIN**  
1,003 SQ FT



**UPPER**  
1,337 SQ FT

For more information or to book an appointment please contact us at **587.525.5079**

Prices are subject to change without notice. Actual floor plan, elevation, and square footage may not be exactly as shown. Square footage is measured to Alberta Building Code (ABC) regulations. Builder reserves the right to make changes without notice. E&OE.

Homes by **AVI**