

QUICK
POSSESSION

THE TITUS

2,571 SQ FT | 4 BED | 3 BATH

27 ROYSTON WAY NW



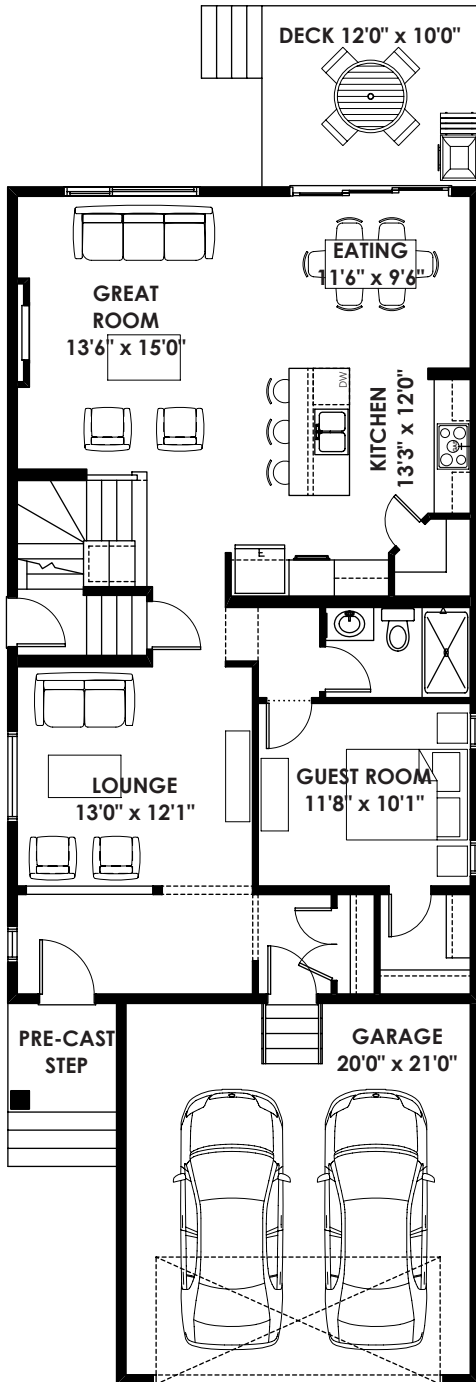
THIS FRONT DRIVE HOME FEATURES

- Main floor bedroom and bath with standing shower
- 3 Large bedrooms upstairs
- Deck
- Side entry
- 9' Basement
- Designer selected interior colours and options

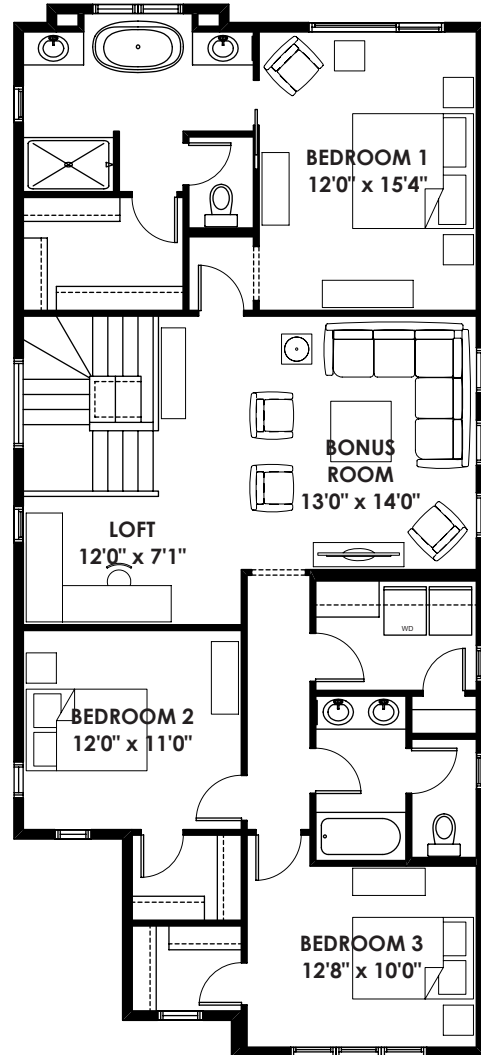
BETTER VALUE BY DESIGN
SINCE 1978 | HOMESBYAVI.COM

Homes by **AVI**

FLOOR PLAN



MAIN
1,170 SQ FT



UPPER
1,401 SQ FT

For more information or to book an appointment please contact us at **403.536.7215**

Prices are subject to change without notice. Actual floor plan, elevation, and square footage may not be exactly as shown. Square footage is measured to Alberta Building Code (ABC) regulations. Builder reserves the right to make changes without notice. E&OE.

Homes by **AVI**