

SHOW
HOME

THE FINN

1,443 SQ FT | 3 BED | 2.5 BATH

2105 MAPLE ROAD NW



THIS DUPLEX HOME FEATURES

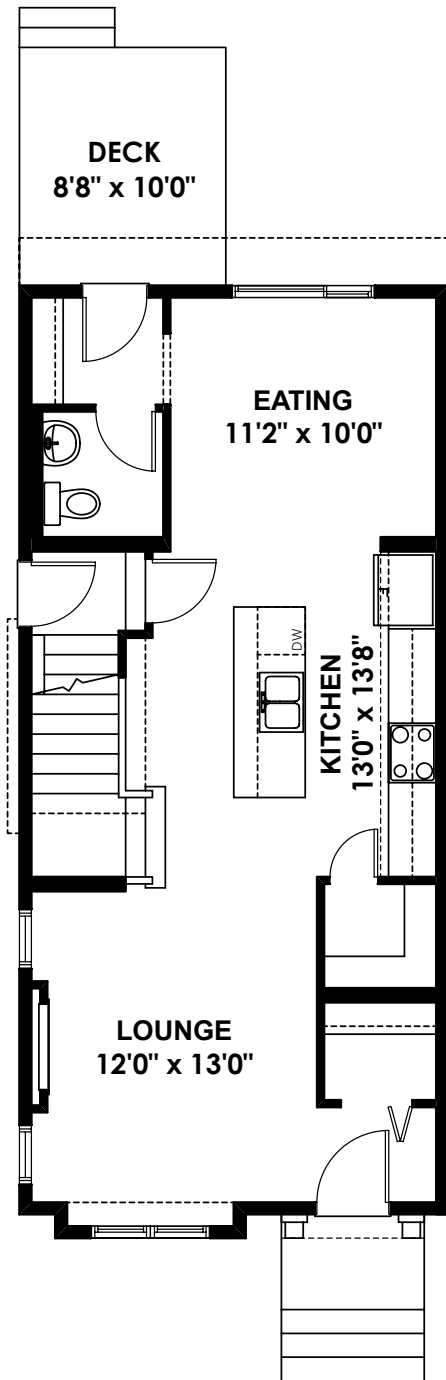
- Large Walk-In Pantry
- Quartz Countertops Throughout
- Side Entrance to Basement
- Corner Lot with Oversized Windows
- Full Landscaping Included
- Rear Double Attached Garage & Deck
- Electric Fireplace in Living Room



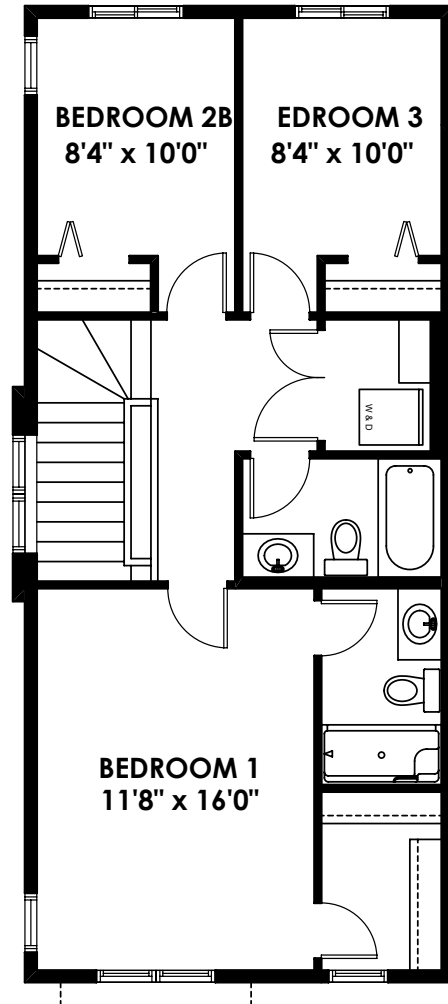
BETTER VALUE BY DESIGN
SINCE 1978 | HOMESBYAVI.COM

Homes by **AVI**

FLOOR PLAN



MAIN
710 SQ FT



UPPER
733 SQ FT

For more information or to book an appointment please contact us at **587.525.5236**

Prices are subject to change without notice. Actual floor plan, elevation, and square footage may not be exactly as shown. Square footage is measured to Alberta Building Code (ABC) regulations. Builder reserves the right to make changes without notice. E&OE.

Homes by **AVI**