

QUICK
POSSESSION

THE HAWTHORNE

2,207 SQ FT | 4 BED | 3 BATH

2360 CHOKECHERRY CLOSE SW



THIS FRONT DRIVE HOME FEATURES

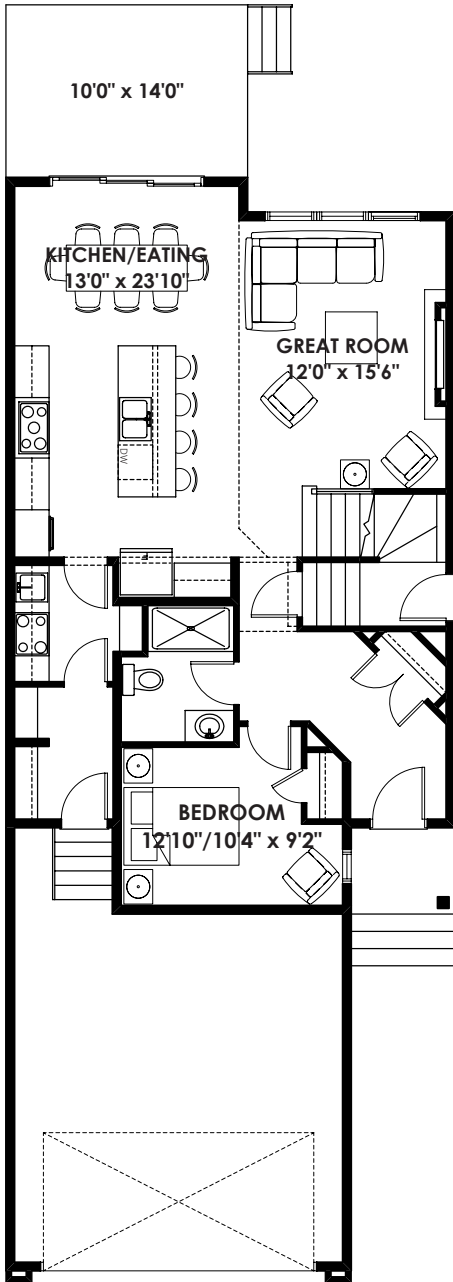
- 556 Sq. ft. basement with 1 bed & 1 bath
- Spice Kitchen
- Open to below concept
- Extended kitchen
- Main floor bedroom with 3-piece bath
- Electric Fireplace
- California knockdown ceiling



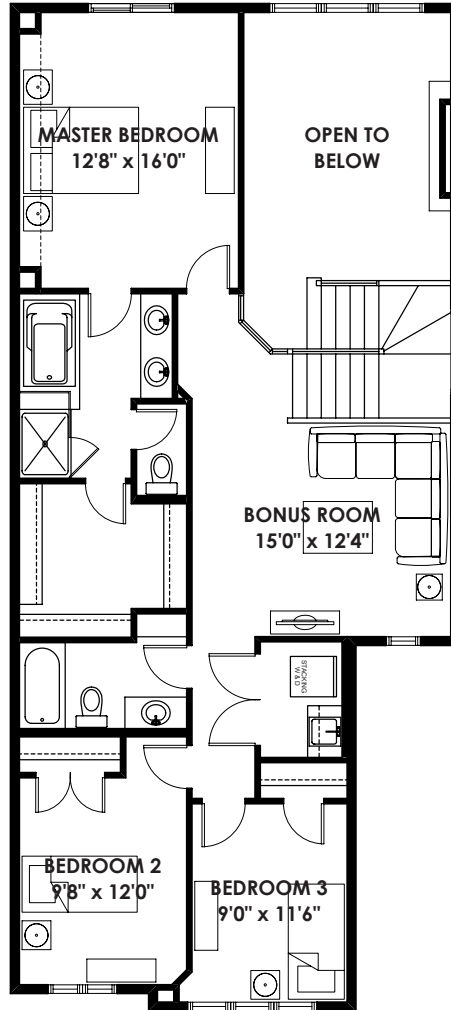
BETTER VALUE BY DESIGN
SINCE 1978 | HOMESBYAVI.COM

Homes by **AVI**

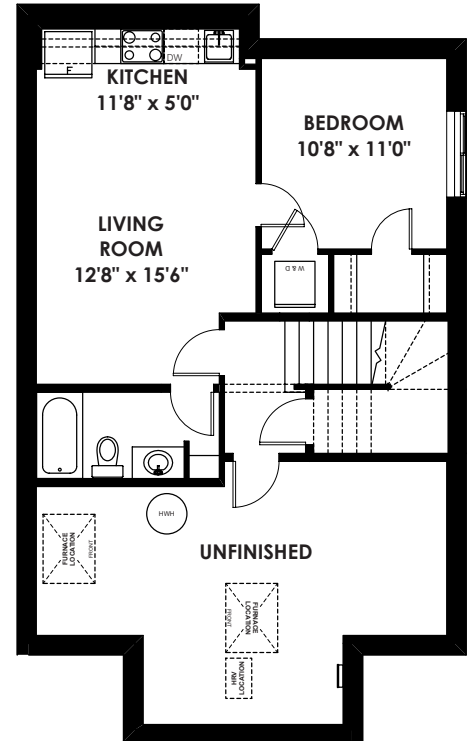
FLOOR PLAN



MAIN
1,025 SQ FT



UPPER
1,182 SQ FT



BASEMENT
556 SQ FT

For more information or to book an appointment please contact us at **587.525.5184**

Prices are subject to change without notice. Actual floor plan, elevation, and square footage may not be exactly as shown. Square footage is measured to Alberta Building Code (ABC) regulations. Builder reserves the right to make changes without notice. E&OE.

Homes by **AVI**