

QUICK  
POSSESSION

# THE HAWTHORNE

2,200 SQ FT | 3 BED | 2.5 BATH

194 REDWING WYND, ST ALBERT



## THIS FRONT DRIVE HOME FEATURES

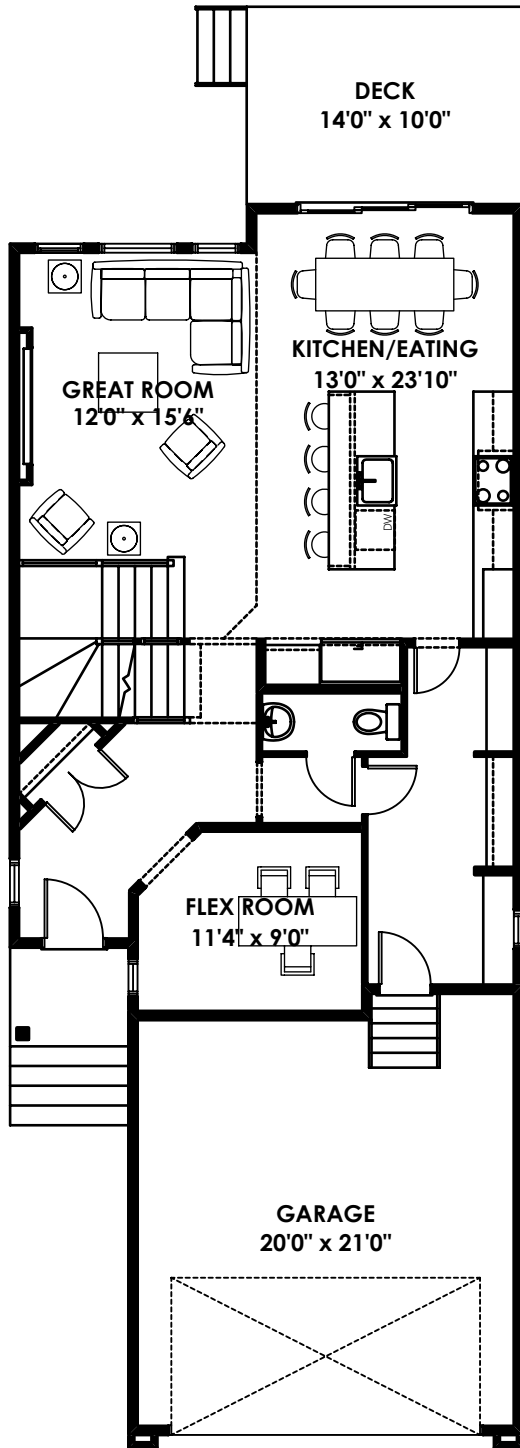
- Quartz countertops throughout
- LVP flooring throughout main floor
- Railing included
- Kitchen chimney hood fan
- Electric fireplace
- Open to below main floor with upgraded windows



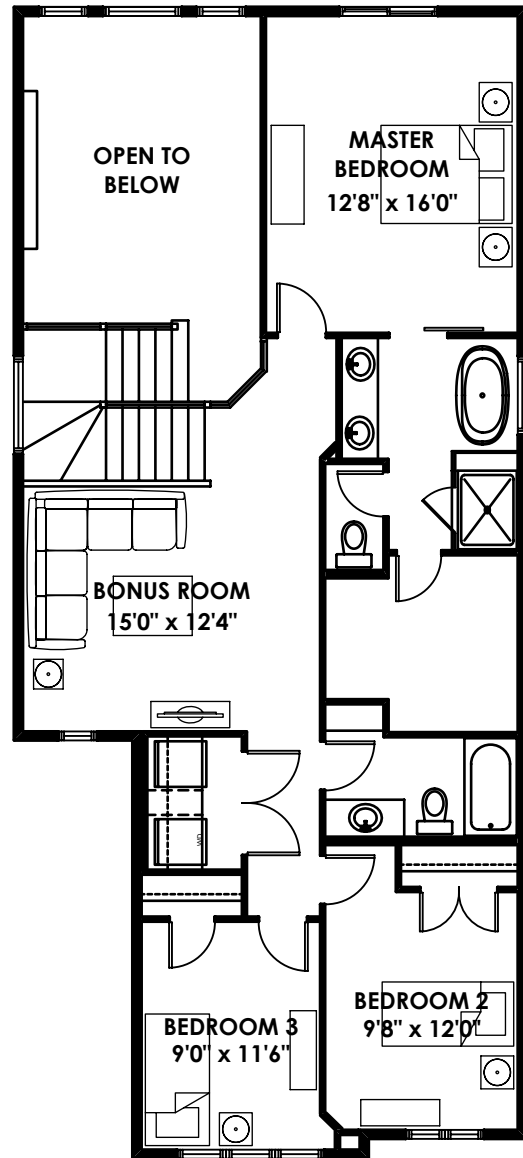
BETTER VALUE BY DESIGN  
SINCE 1978 | HOMESBYAVI.COM

Homes by **AVI**

# FLOOR PLAN



**MAIN**  
1018 SQ FT



**UPPER**  
1182 SQ FT

For more information or to book an appointment please contact us at **587-525-5092**

Prices are subject to change without notice. Actual floor plan, elevation, and square footage may not be exactly as shown. Square footage is measured to Alberta Building Code (ABC) regulations. Builder reserves the right to make changes without notice. E&OE.

Homes by **AVI**