

SHOW
HOME

THE TITUS

2,595 SQ FT | 5 BED | 4 BATH

126 ROWLEY WAY NW



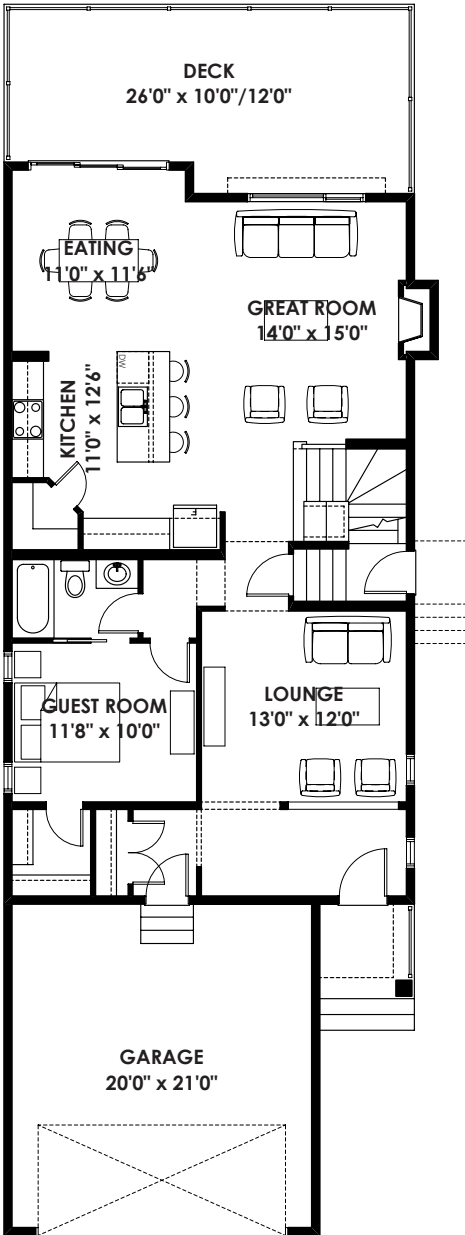
THIS FRONT DRIVE HOME FEATURES

- Full legal suite
- Walkout basement
- Convenient main floor bedroom and bathroom
- Dark walls showcasing a contemporary theme
- Full width deck backing onto water feature
- Upgraded spacious ensuite

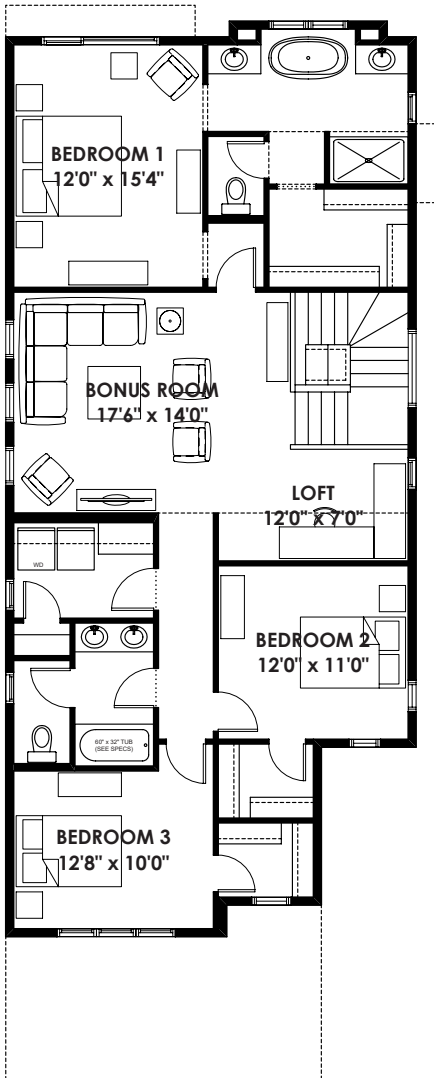
BETTER VALUE BY DESIGN
SINCE 1978 | HOMESBYAVI.COM

Homes by **AVI**

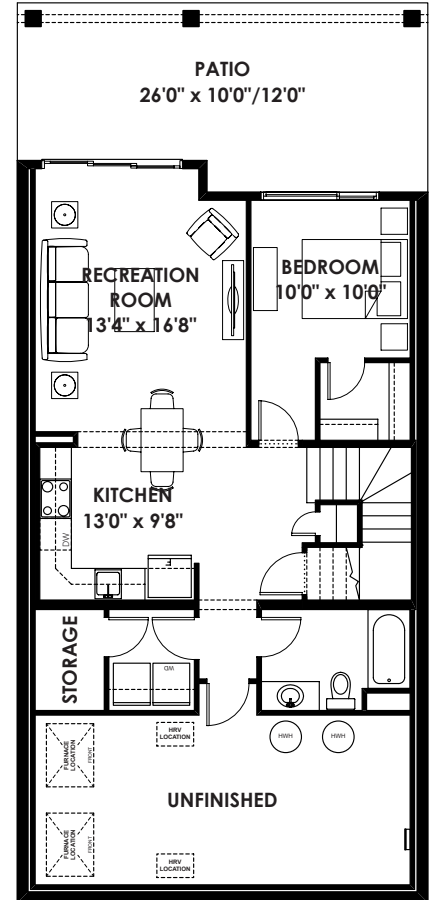
FLOOR PLAN



MAIN
1,194 SQ FT



UPPER
1,401 SQ FT



BASEMENT
775 SQ FT

For more information or to book an appointment please contact us at **403.536.7215**

Prices are subject to change without notice. Actual floor plan, elevation, and square footage may not be exactly as shown. Square footage is measured to Alberta Building Code (ABC) regulations. Builder reserves the right to make changes without notice. E&OE.

Homes by **AVI**