

SHOW
HOME

THE JEFFERSON

2,343 SQ FT | 4 BED | 3.5 BATH

684 WALGROVE BLVD SE



THIS FRONT DRIVE HOME FEATURES

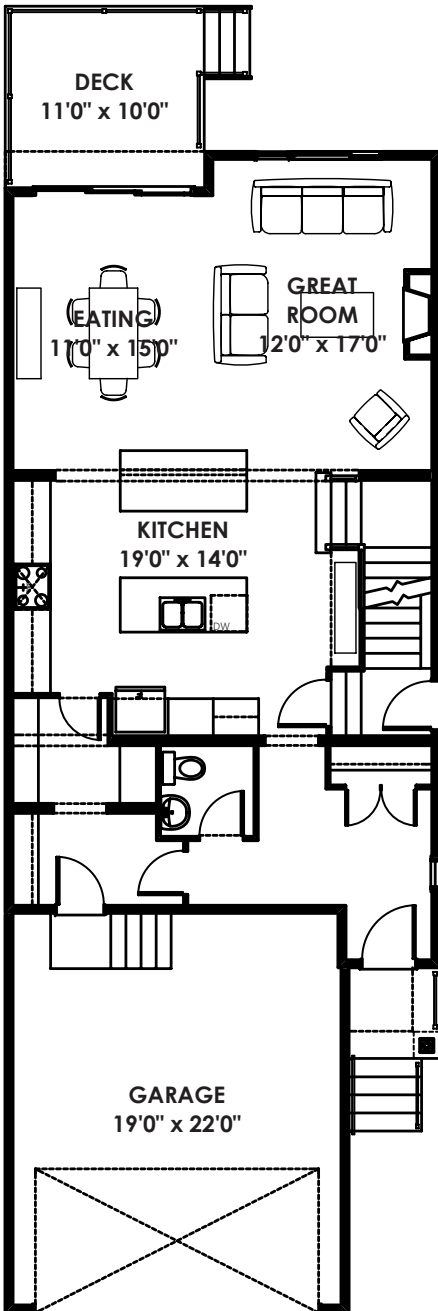
- Double island kitchen with chimney hoodfan and built in microwave
- Railing to staircase
- Side entrance
- Main bath features double sinks
- 635 sqft developed basement with additional bedroom, bathroom, rec room and features 9' ceilings
- Double door entry to master bedroom
- Gas fireplace



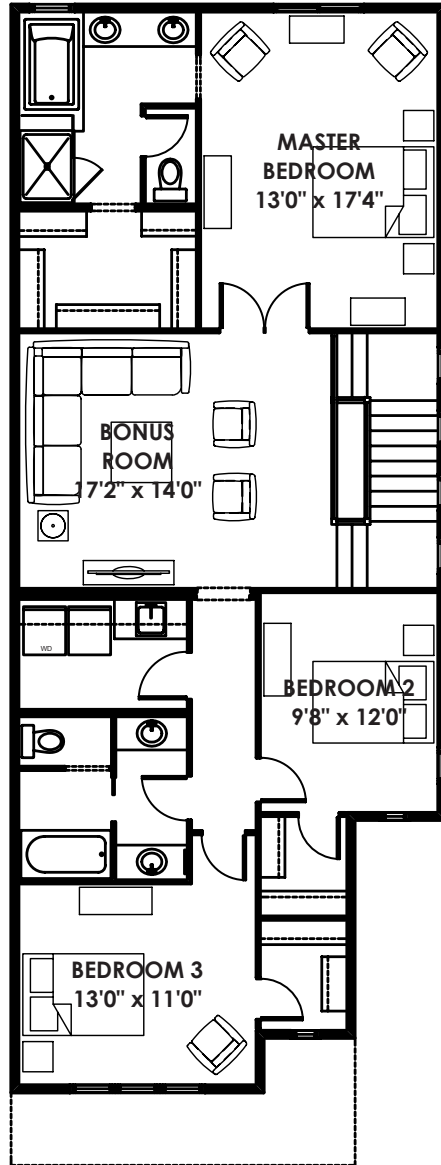
BETTER VALUE BY DESIGN
SINCE 1978 | HOMESBYAVI.COM

Homes by **AVI**

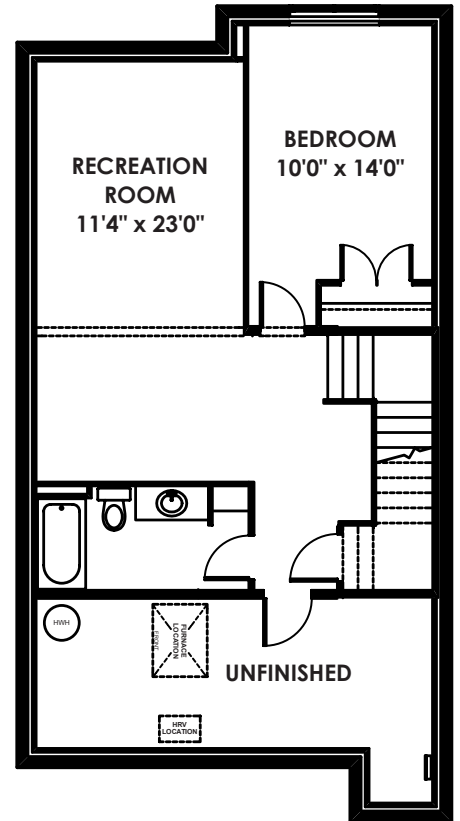
FLOOR PLAN



MAIN
1,003 SQ FT



UPPER
1,340 SQ FT



BASEMENT
635 SQ FT

For more information or to book an appointment please contact us at **403.536.7272**

Prices are subject to change without notice. Actual floor plan, elevation, and square footage may not be exactly as shown. Square footage is measured to Alberta Building Code (ABC) regulations. Builder reserves the right to make changes without notice. E&OE.

Homes by **AVI**