



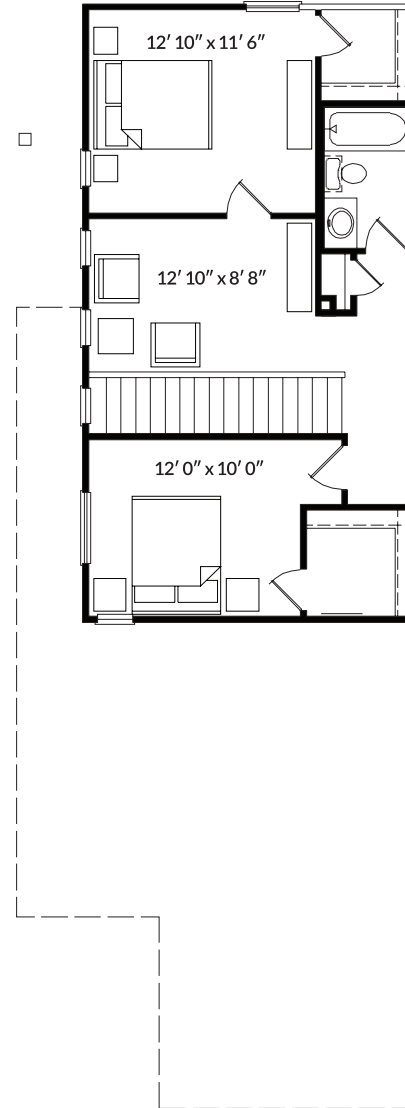
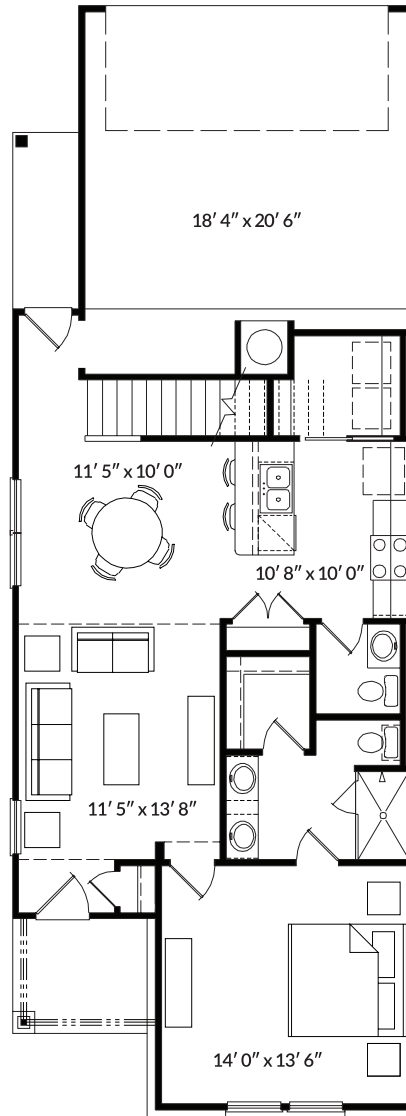
ROW HOMES

MODEL
LIVE OAK

1,524 SQ FT
3 BED | 2.5 BATH

Homes by
AVI

homesbyavi.com



ELEVATION A



ELEVATION B



*Dimensions and areas as stated in reference to rooms, spaces or features are measured from the applicable inside face of framing. The overall unit floor plan area is calculated from the outside of exterior framing wall to the center of party wall at floor level. Avi Homes reserves the right to make modifications or substitutions without notice. Actual floor plan and square footage may not be exactly as shown. Please note a different measurement methodology may apply for (CREB) Residential Measurement Standards than has been utilized for the purpose of this drawing. See Disclosure documents. Effective 7/15/2019.