

26'

THE TITUS

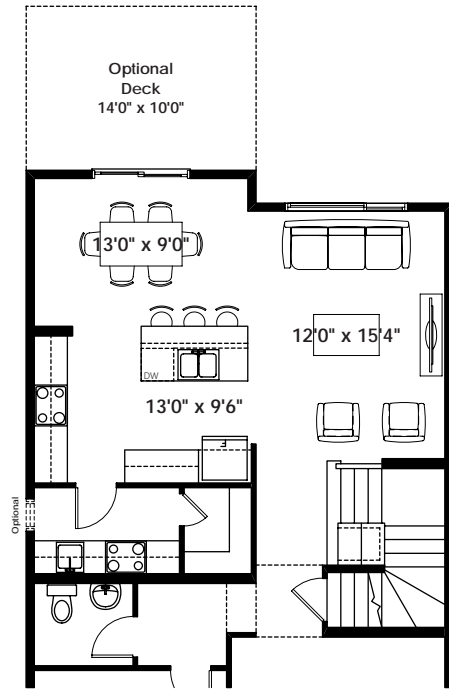
2,547+ SQ FT | 3 BED | 2.5 BATH



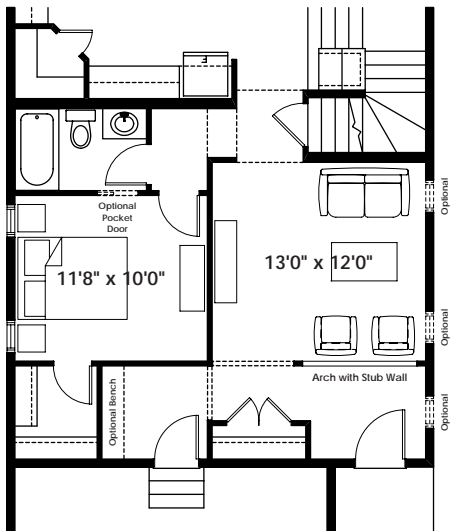
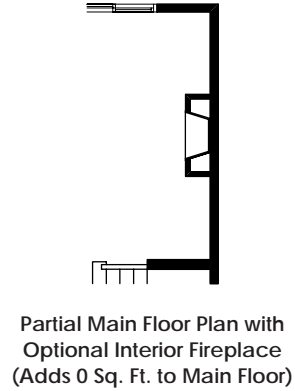
BETTER VALUE BY DESIGN
SINCE 1978 | HOMESBYAVI.COM

Homes by **AVI**

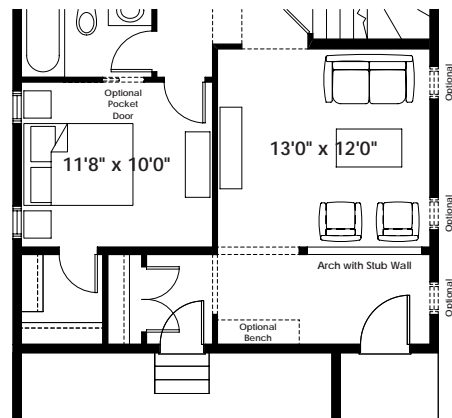
FLOOR PLAN OPTIONS



Partial Main Floor Plan with Optional Spice Kitchen (Adds 28 Sq. Ft. to Main Floor)



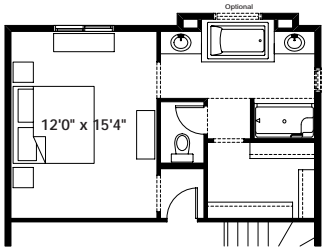
Partial Main Floor Plan with Optional Bedroom & Bathroom (Adds 0 Sq. Ft. to Main Floor)



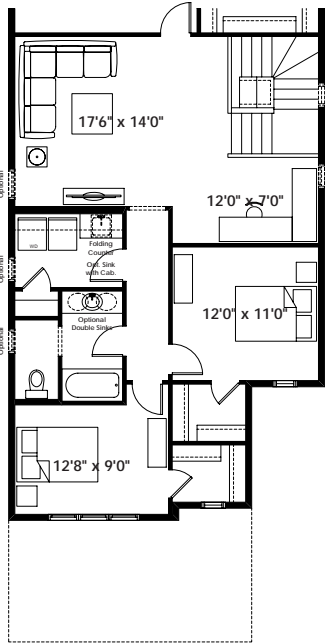
Partial Main Floor Plan with Optional Closet Location for Use with Optional Bedroom & Bathroom (Adds 0 Sq. Ft. to Main Floor)

ADDITIONAL OPTIONS

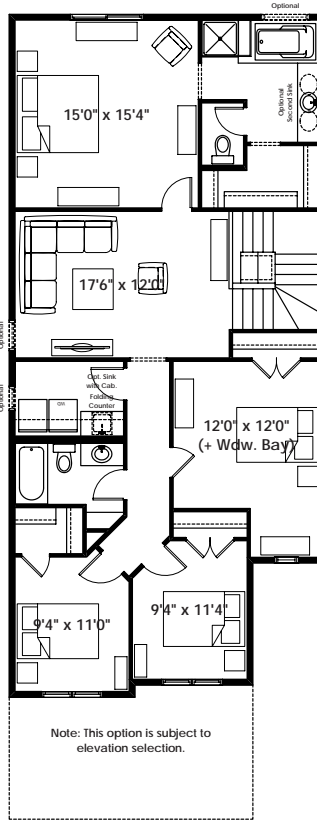
FLOOR PLAN OPTIONS



Partial Second Floor Plan with
Optional Alternate Ensuite #1
(Adds 10 Sq. Ft. to Second Floor)

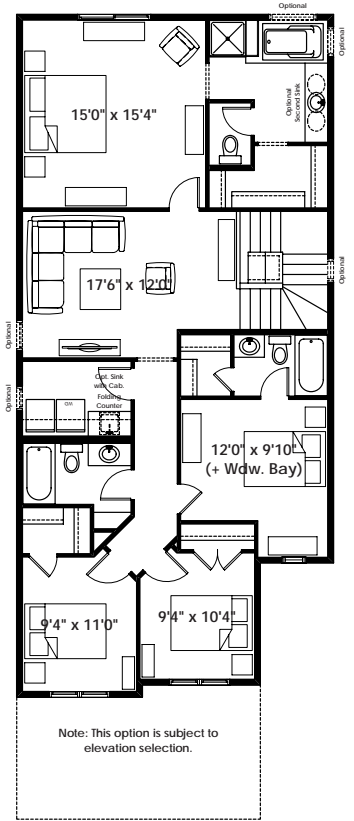


Partial Second Floor Plan with
Optional Alternate Main Bath #1
(Adds 0 Sq. Ft. to Second Floor;
Not available with Optional 4 Bedroom Layout)



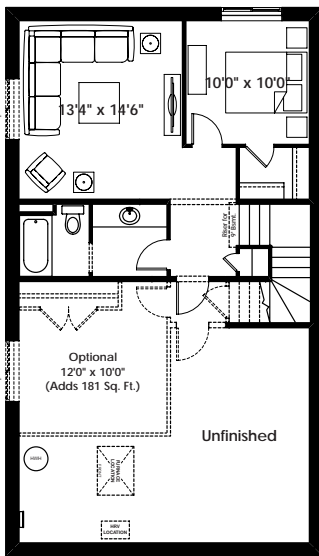
Note: This option is subject to
elevation selection.

Second Floor Plan with
Optional 4 Bedroom Layout
(Removes 4 Sq. Ft. from Second Floor)

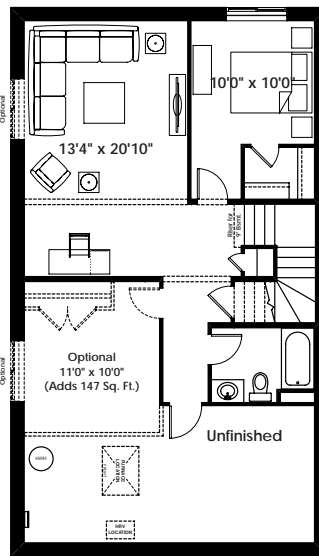


Note: This option is subject to
elevation selection.

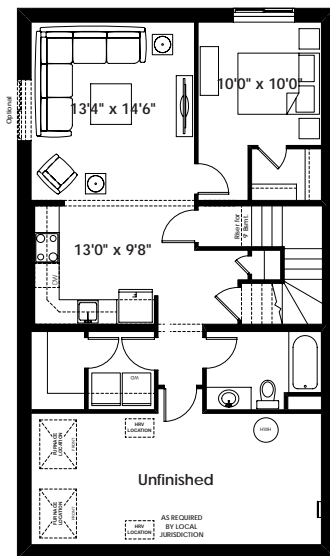
Second Floor Plan with
Optional 4 Bedroom Layout
With Second Ensuite
(Removes 4 Sq. Ft. from Second Floor)



Optional Basement Room Layout
508 Sq. Ft. (Finished Area)



Optional Alternate Basement Room Layout
621 Sq. Ft. (Finished Area)



Optional 1 Bedroom Basement Suite Layout
739 Sq. Ft. (Finished Area;
Must add Optional Side Entry)

Prices are subject to change without notice. Actual floor plan, elevation, and square footage may not be exactly as shown. Square footage is measured to Alberta Building Code (ABC) regulations. Builder reserves the right to make changes without notice. E&OE.