

26'

THE ROSEMONT

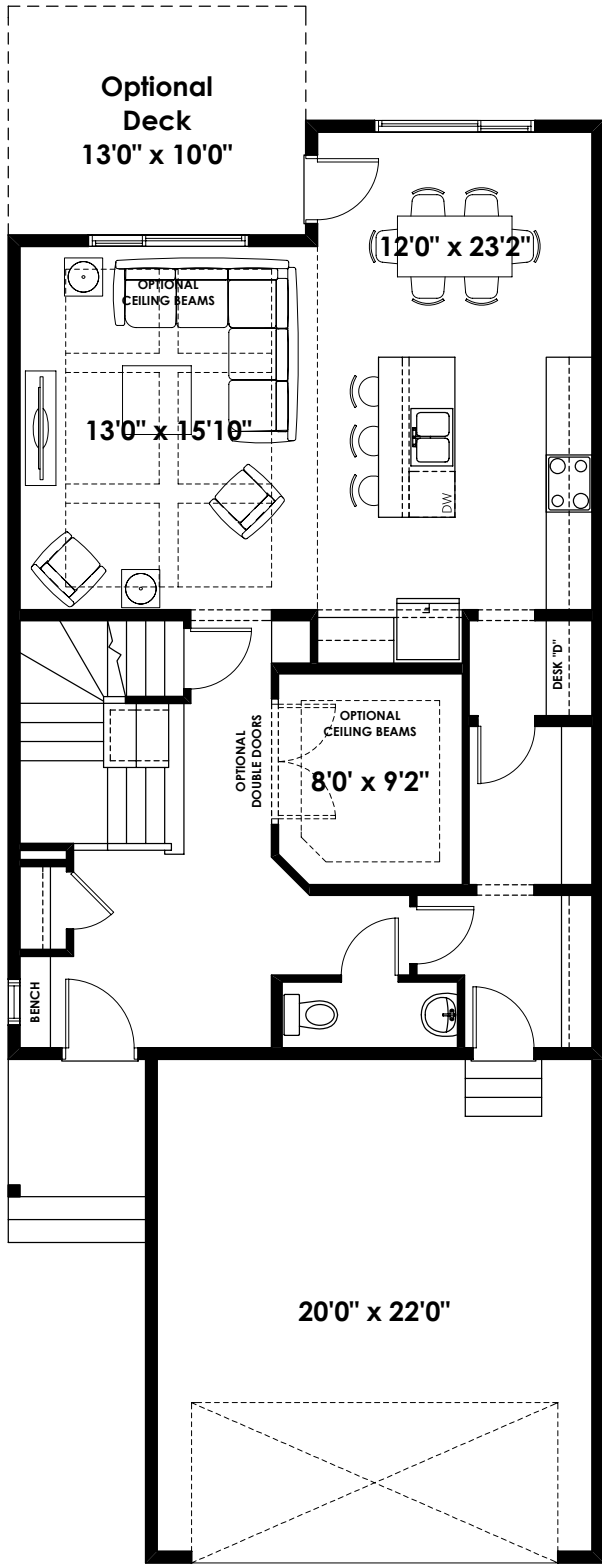
2,243+ SQ FT | 3 BED | 2.5 BATH



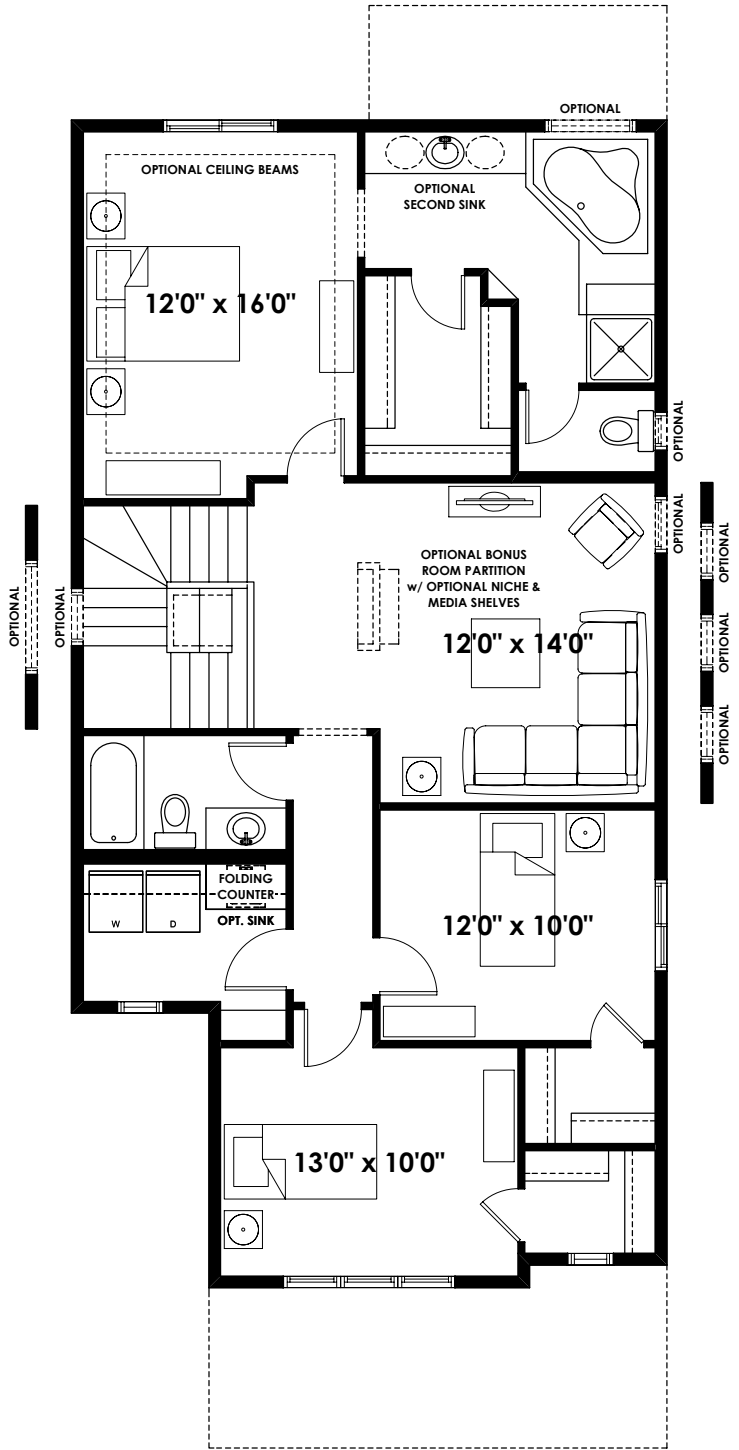
BETTER VALUE BY DESIGN
SINCE 1978 | HOMESBYAVI.COM

Homes by **AVI**

BASE FLOOR PLAN

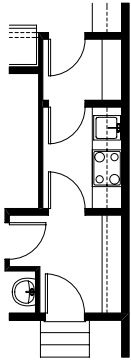


MAIN
1,001 SQ FT

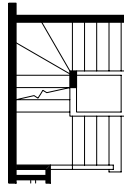


UPPER
1,242 SQ FT

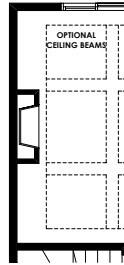
FLOOR PLAN OPTIONS



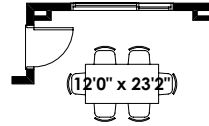
Partial Main Floor Plan with
Optional Spice Kitchen
(Adds 0 Sq. Ft. to Main Floor)



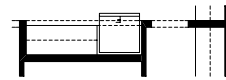
Partial Main Floor Plan with
Optional Finished Stair to
Basement with Opening
(Adds 0 Sq. Ft. to Main Floor;
Must Add 60 Sq. Ft. of Finished
Basement Area Minimum)



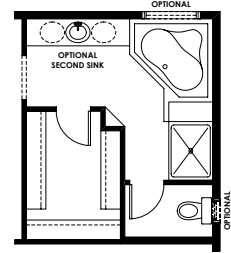
Partial Main Floor Plan with
Optional Interior Fireplace
(Adds 0 Sq. Ft. to Main Floor)



Eating Area For Use With
Optional Upgraded Ensuite #4
(Adds 0 Sq. Ft. to Main Floor)

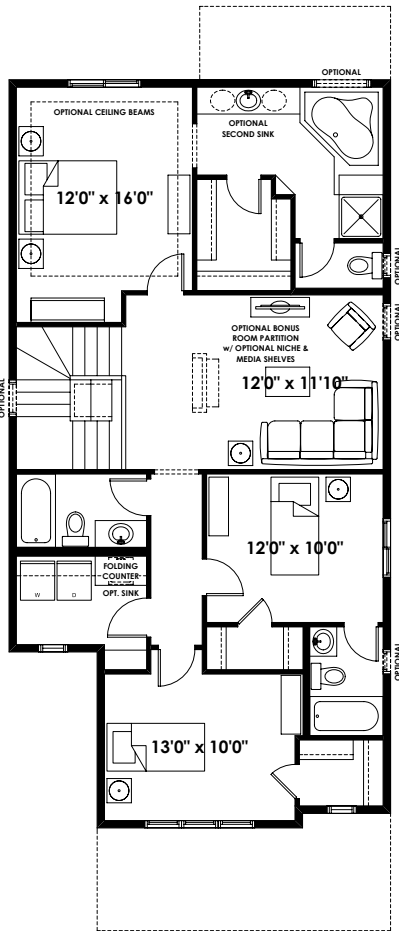


Partial Main Floor Plan with
Optional Cabinet Extension
to Fridge Wall
(Adds 0 Sq. Ft. to Main Floor)

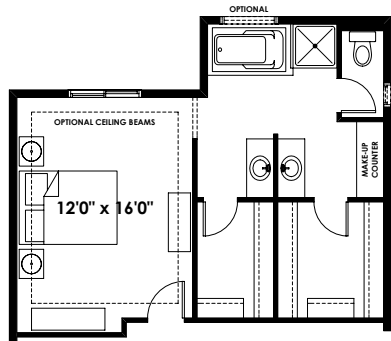


Partial Second Floor Plan with
Optional Upgraded Ensuite #1
(Adds 0 Sq. Ft. to Second Floor)

Not Available with Optional Second Floor
with Ensuite for Bedroom 2

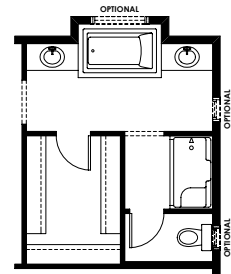


Optional Second Floor Plan
with Ensuite for Bedroom 2
for Rosemont - Base Elevation
(Adds 0 Sq. Ft. to Second Floor)



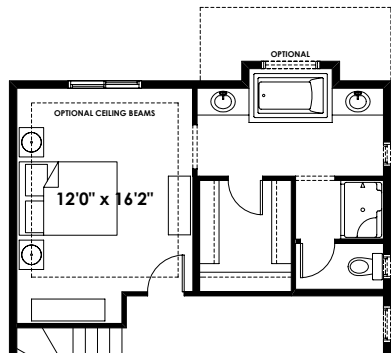
Partial Second Floor Plan with
Optional Upgraded Ensuite #4
(Adds 65 Sq. Ft. to Second Floor)

Not Available with Optional Second Floor
with Ensuite for Bedroom 2

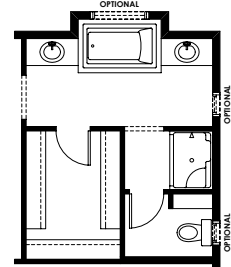


Partial Second Floor Plan with
Optional Upgraded Ensuite #3
(Adds 9 Sq. Ft. to Second Floor)

Not Available with Optional Second Floor
with Ensuite for Bedroom 2



Partial Second Floor Plan with
Optional Upgraded Ensuite
for Use with Optional Second Floor
with Ensuite for Bedroom 2
(Adds 9 Sq. Ft. to Second Floor)

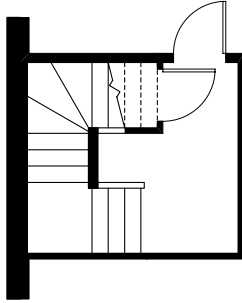


Partial Second Floor Plan with
Optional Upgraded Ensuite #2
(Adds 9 Sq. Ft. to Second Floor)

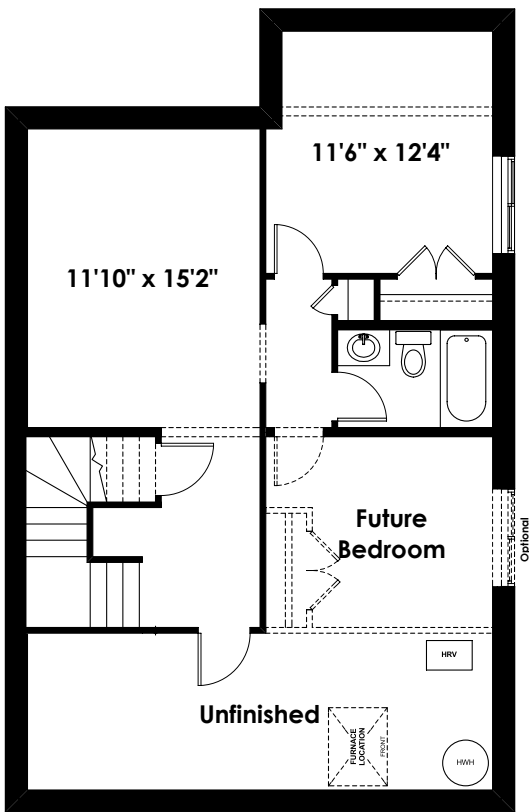
Not Available with Optional Second Floor
with Ensuite for Bedroom 2

ADDITIONAL
OPTIONS

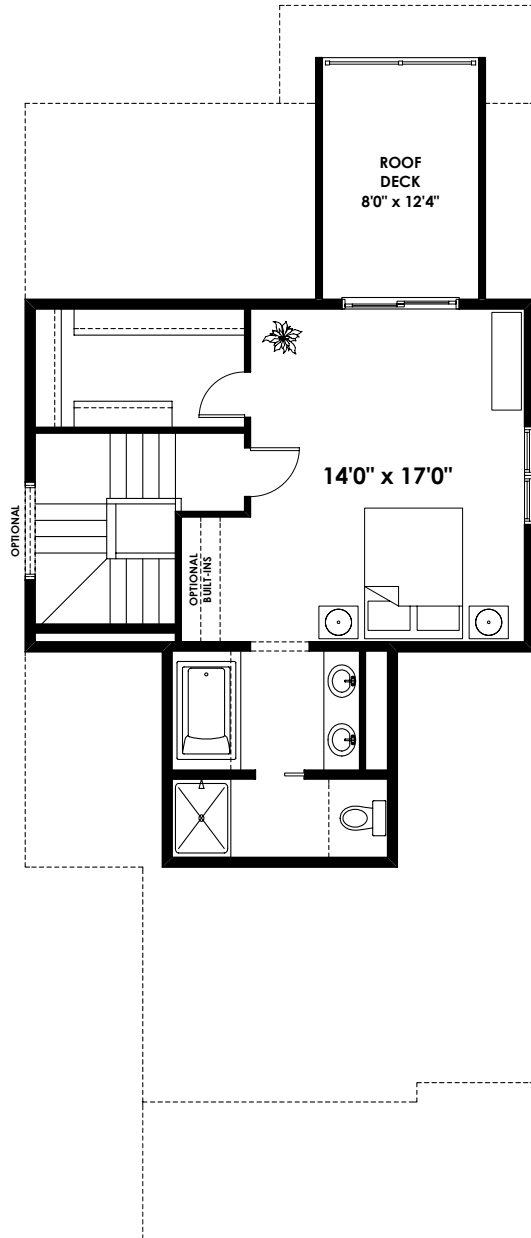
FLOOR PLAN OPTIONS



Basement Landing for Optional Finished Stair to Basement with Opening Adds 60 Sq. Ft. (Finished Area) (Not Included in Contract)



**Optional Basement Room Layout
527 Sq. Ft. (Finished Area)**



**Optional Third Floor Plan for
Rosemont - Base Elevation
(Adds 589 Sq. Ft.)**

**Note: Subject to Approval of Selected Elevation
Not available with Optional Upgraded Ensuite #4**