

26'

THE DONOVAN

2,029+ SQ FT | 3 BED | 2.5 BATH



BETTER VALUE BY DESIGN
SINCE 1978 | HOMESBYAVI.COM

Homes by **AVI**

BASE FLOOR PLAN

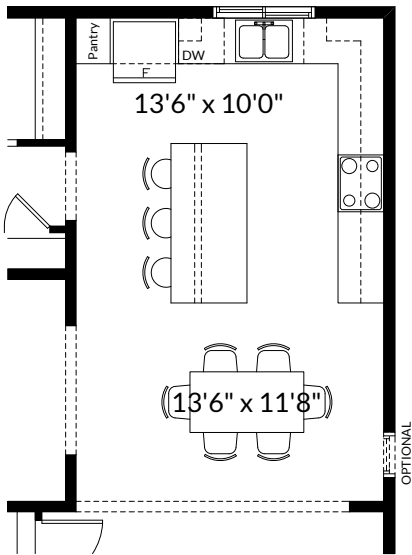


Optional Deck
10'0" x 10'0"

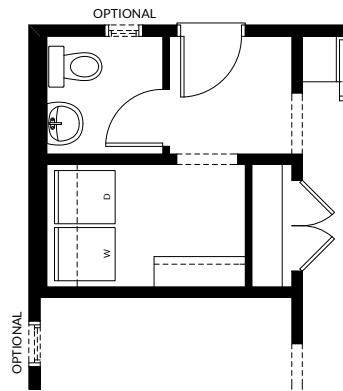
MAIN
990 SQ FT

UPPER
1,039 SQ FT

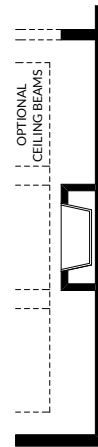
FLOOR PLAN OPTIONS



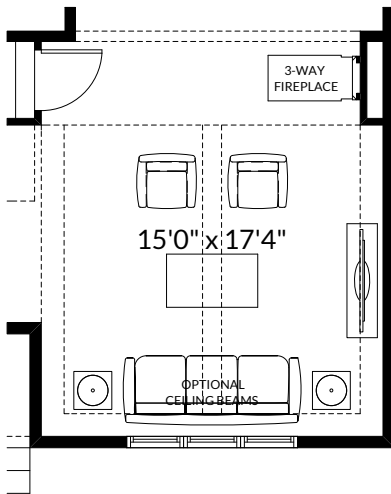
Partial Main Floor Plan with Optional Kitchen Layout (Adds 0 Sq. Ft. to Main Floor)



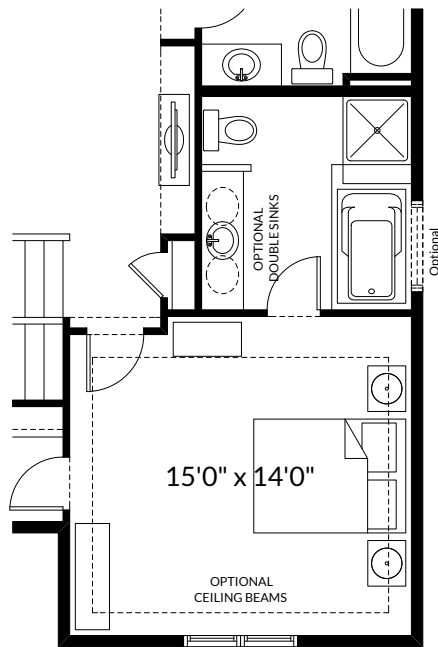
Partial Main Floor Plan with Optional Mudroom, Laundry and Half Bath Layout (Adds 0 Sq. Ft. to Main Floor)



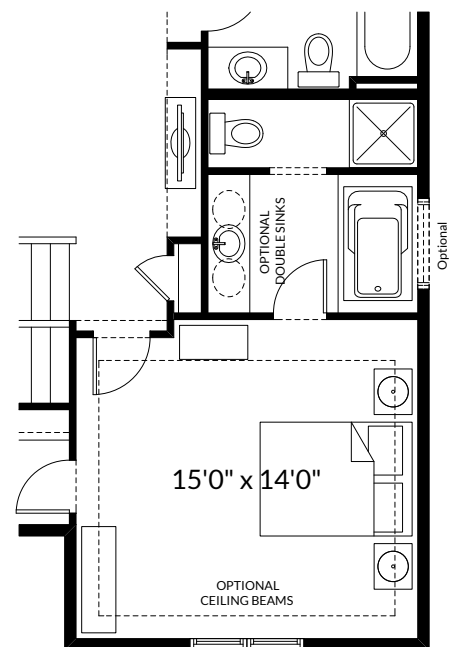
Partial Main Floor Plan with Optional Interior Fireplace (Adds 0 Sq. Ft. to Main Floor)



Partial Main Floor Plan with Optional 3-Way Fireplace (Adds 0 Sq. Ft. to Main Floor)



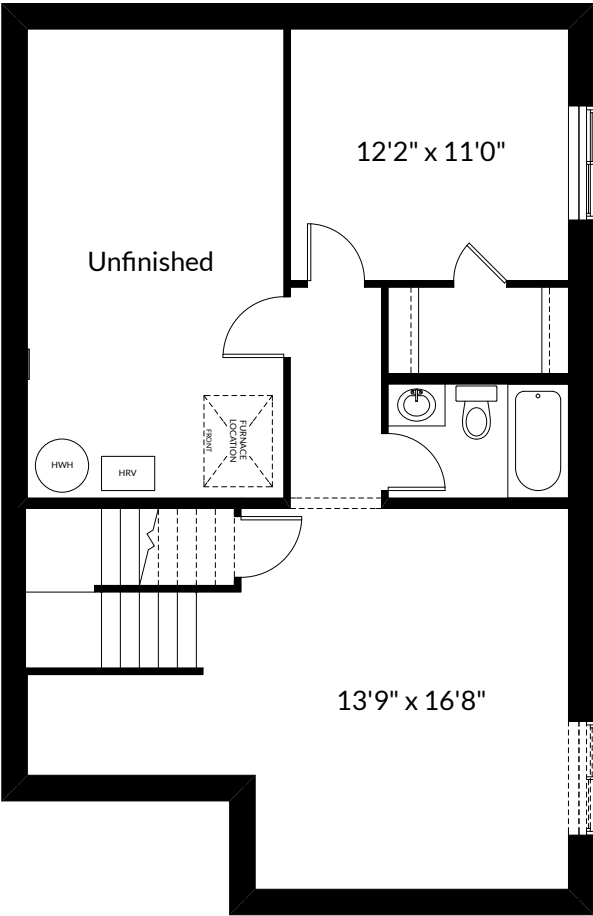
Partial Second Floor Plan with Optional 4 Piece Ensuite with Glass Wall Shower and Tile Seat for Donovan - Base Elevation (Adds 0 Sq. Ft. to Second Floor)



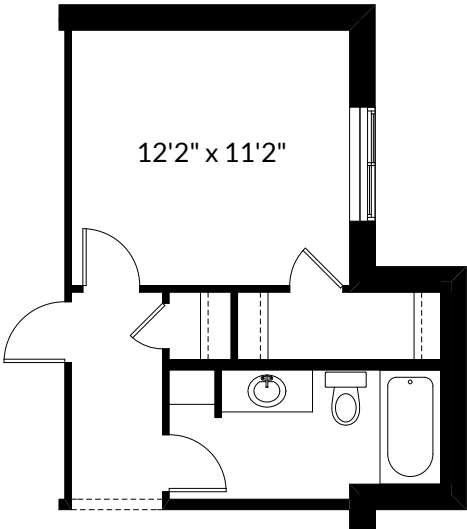
Partial Second Floor Plan with Optional 4 Piece Ensuite for Donovan - Base Elevation (Adds 0 Sq. Ft. to Second Floor)

ADDITIONAL
OPTIONS

FLOOR PLAN OPTIONS



Future Basement Room Layout 592 Sq. Ft. (Finished Area)
(NOT INCLUDED IN CONTRACT)



Partial Basement Room Layout with 4' Width
Extension (Adds 38 Sq.Ft. to Foundation)

Prices are subject to change without notice. Actual floor plan, elevation, and square footage may not be exactly as shown. Square footage is measured to Alberta Building Code (ABC) regulations. Builder reserves the right to make changes without notice. E&OE.