

24'

THE MASON

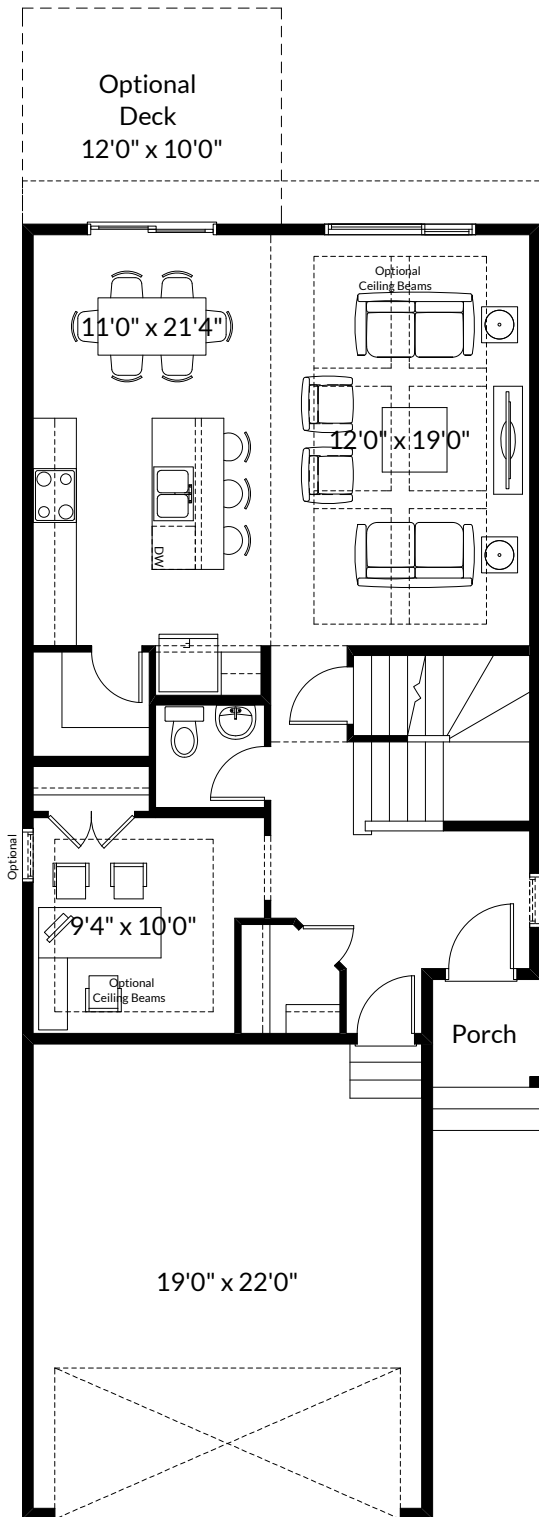
2,024+ SQ FT | 3 BED | 2.5 BATH



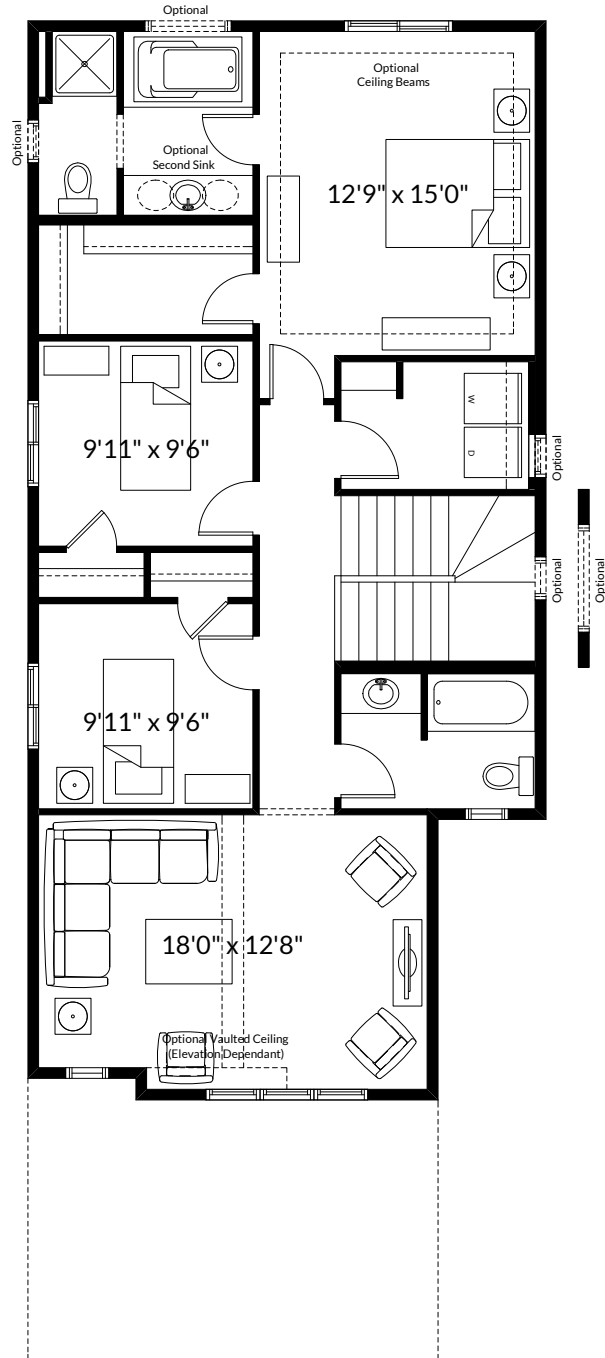
BETTER VALUE BY DESIGN
SINCE 1978 | HOMESBYAVI.COM

Homes by **AVI**

BASE FLOOR PLAN

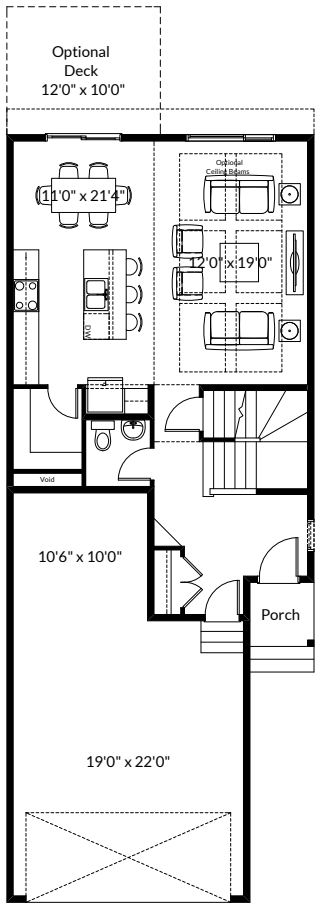


MAIN
897 SQ FT

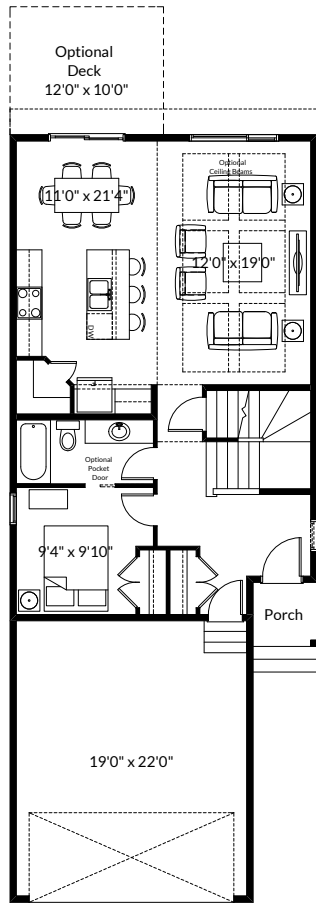


UPPER
1,127 SQ FT

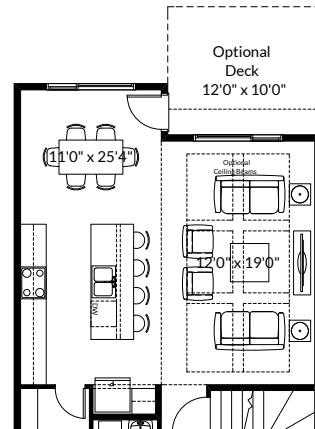
FLOOR PLAN OPTIONS



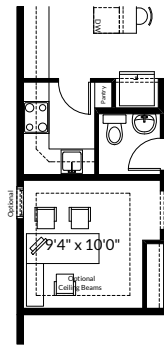
Main Floor Plan for
Optional Additional Garage Storage
(Removes 110 Sq. Ft. from Main Floor)



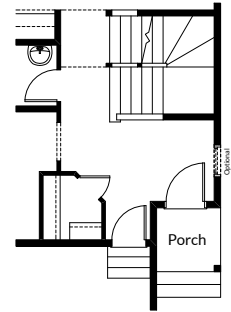
Main Floor Plan with
Optional Bedroom & 3 Piece Bathroom
(Adds 0 Sq. Ft. to Main Floor)



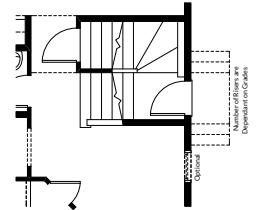
Partial Main Floor Plan with
Optional Extended Kitchen/Nook
(Adds 48 Sq. Ft. to Main Floor)



Partial Main Floor Plan with
Optional Spice Kitchen
(Adds 0 Sq. Ft. to Main Floor)

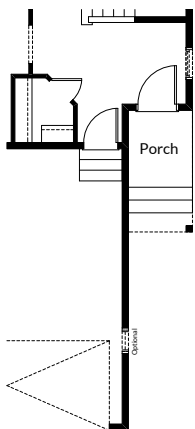


Optional Finished Stair
to Basement c/w Center
Wall Opening
(Adds 0 Sq. Ft. to Main Floor)

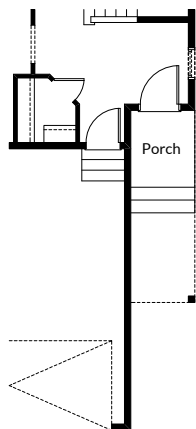


Partial Main Floor Plan
with Optional Side Entry
(Adds 0 Sq. Ft. to Main Floor;
Lot & Bylaw Permitting)

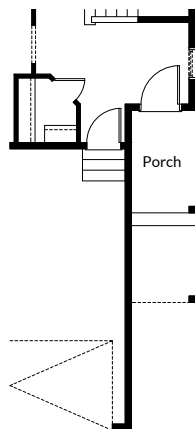
NOTE: BASEMENT STAIR UNFINISHED



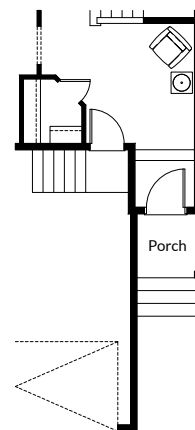
Partial Main Floor Plan for
Mason - Sunset Ridge Elevations
(Adds 0 Sq. Ft. to Main Floor)



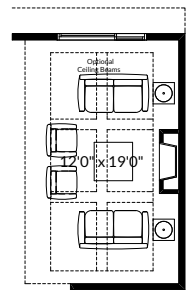
Partial Main Floor Plan for
Mason - Kings Heights Elevations
(Adds 0 Sq. Ft. to Main Floor)



Partial Main Floor Plan for
Mason - Livingston Elevations
(Adds 0 Sq. Ft. to Main Floor)



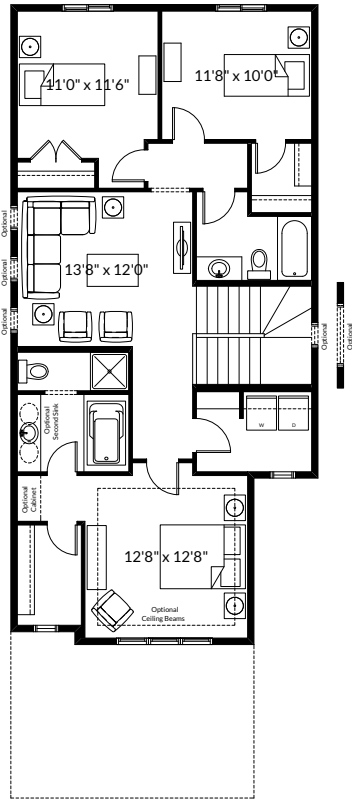
Partial Main Floor Plan with
Optional Dropped Entry
for Southfork Elevations
(Adds 43 Sq. Ft. to Main Floor)



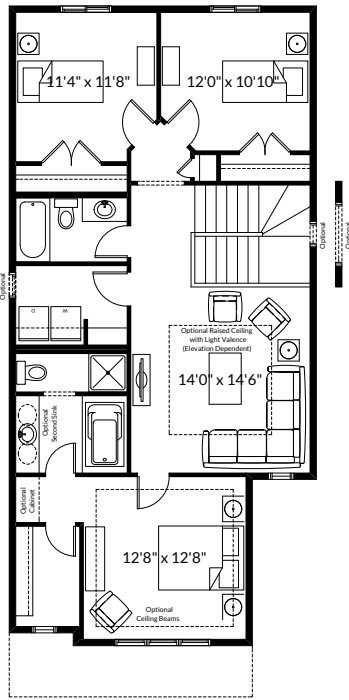
Partial Main Floor Plan
with Optional Interior Fireplace
(Adds 0 Sq. Ft. to Main Floor)

ADDITIONAL
OPTIONS

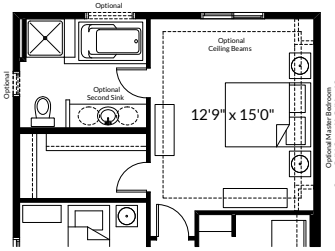
FLOOR PLAN OPTIONS



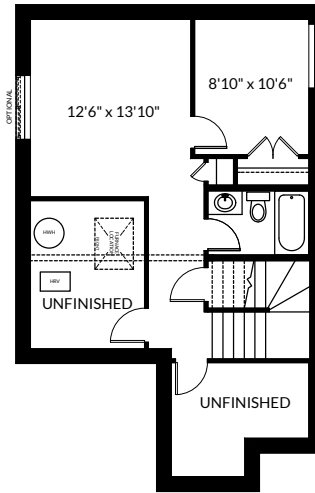
Optional Second Floor Plan
(Adds 0 Sq. Ft. to Second Floor)



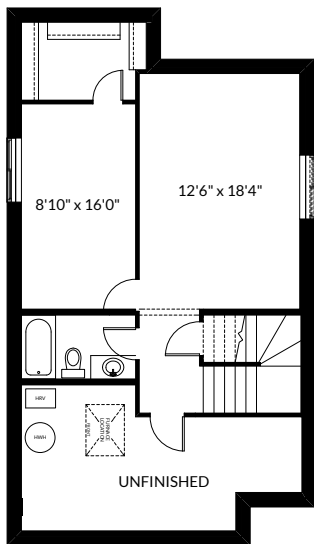
Second Floor Plan
For Livingston Elevations Only
(Adds 0 Sq. Ft. to Second Floor)



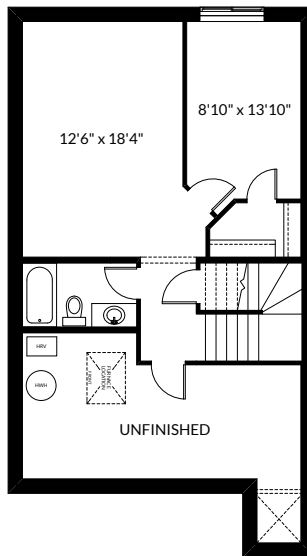
Partial Second Floor Plan with
Optional Upgraded Ensuite #1
(Adds 0 Sq. Ft. to Second Floor)



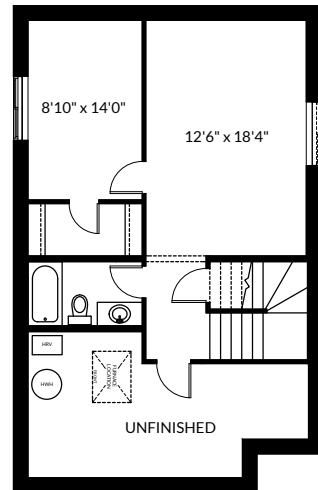
Optional Basement Room Layout
For Optional Additional Garage Storage
434 Sq. Ft. (Finished Area)



Optional Basement Room Layout
for Optional Extended Nook
574 Sq. Ft. (Finished Area)



Optional Basement Room Layout
for Dropped Entry
530 Sq. Ft. (Finished Area)



Optional Basement Room Layout
532 Sq. Ft. (Finished Area)

Prices are subject to change without notice. Actual floor plan, elevation, and square footage may not be exactly as shown. Square footage is measured to Alberta Building Code (ABC) regulations. Builder reserves the right to make changes without notice. E&OE.