

24'

# THE LUKA

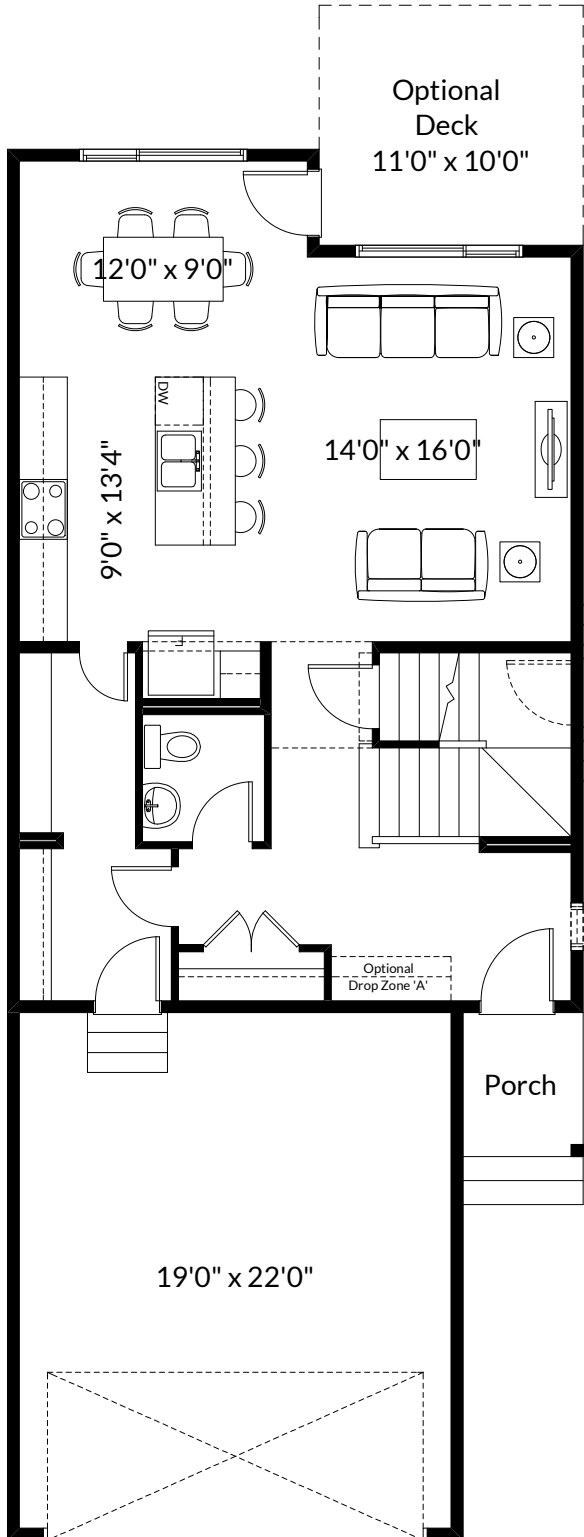
1,859+ SQ FT | 3 BED | 2.5 BATH



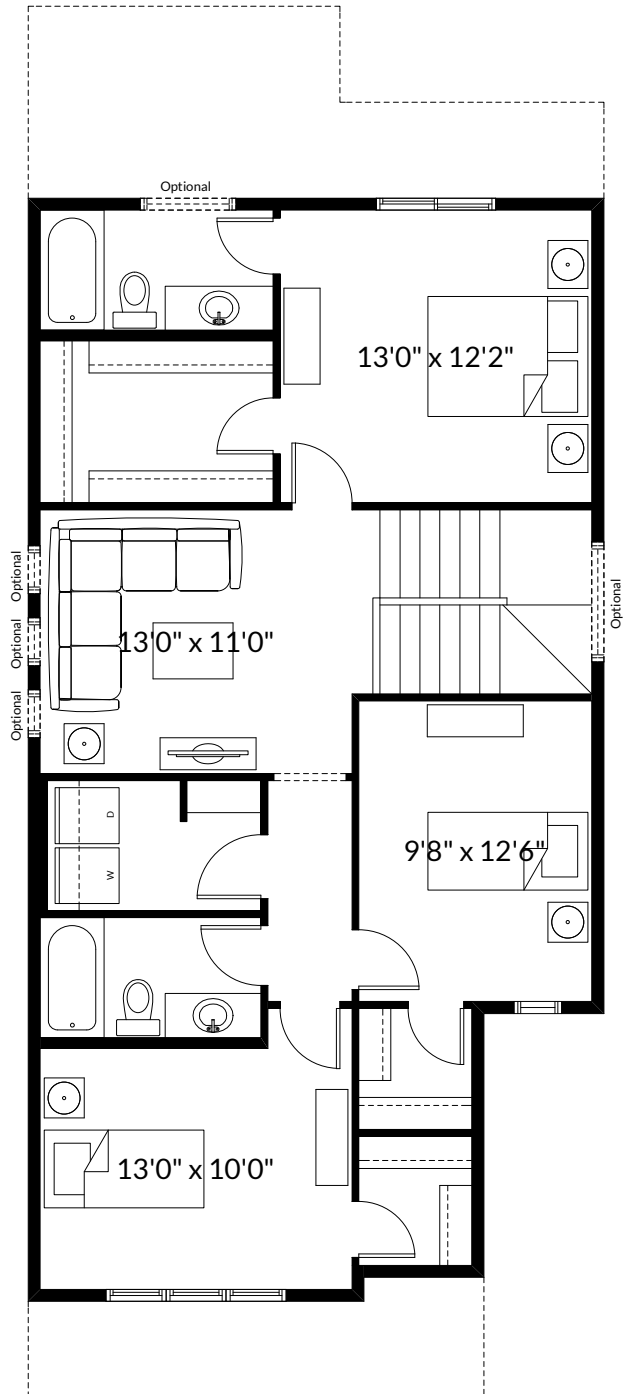
BETTER VALUE BY DESIGN  
SINCE 1978 | HOMESBYAVI.COM

Homes by **AVI**

# BASE FLOOR PLAN

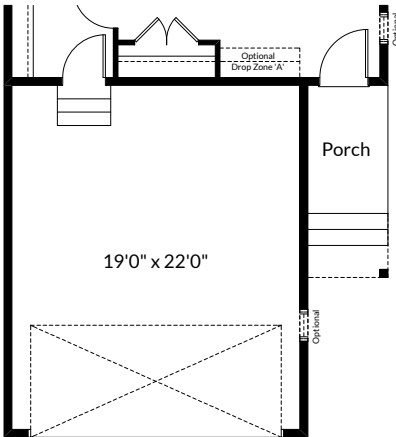


**MAIN**  
820 SQ FT

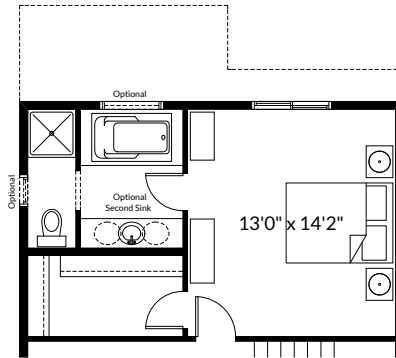


**UPPER**  
1,039 SQ FT

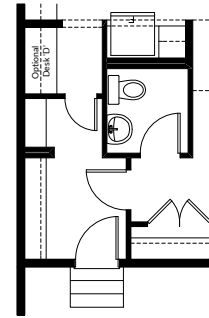
# FLOOR PLAN OPTIONS



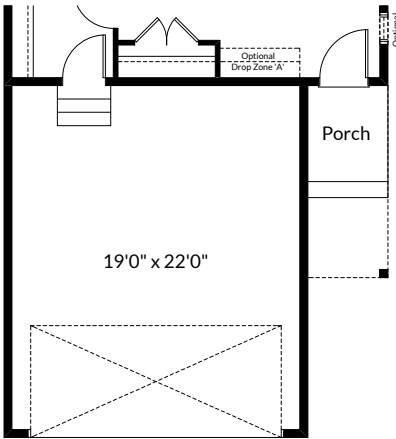
Partial Main Floor Plan for  
Luka - Sunset Ridge Elevations  
(Adds 0 Sq. Ft. to Main Floor)



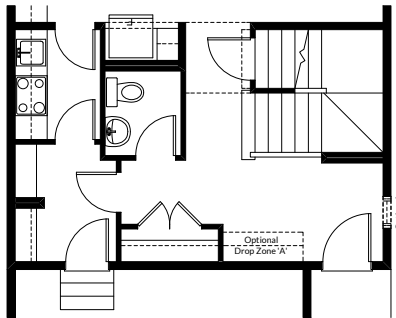
Partial Second Floor Plan with  
Optional Upgraded Ensuite  
(Adds 48 Sq. Ft. to Second Floor)



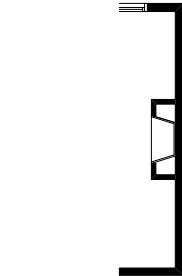
Partial Main Floor Plan with  
Optional Kitchen Desk  
(Adds 0 Sq. Ft. to Main Floor)



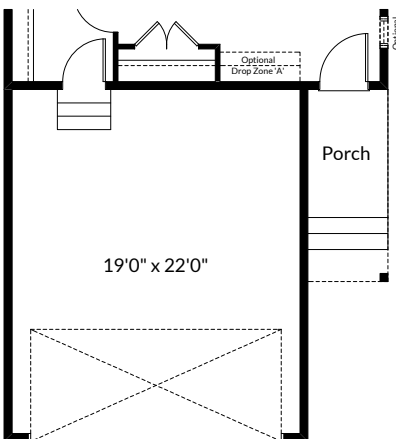
Partial Main Floor Plan for  
Luka - Livingston Elevations  
(Adds 0 Sq. Ft. to Main Floor)



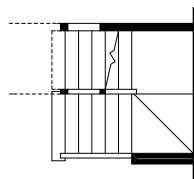
Partial Main Floor Plan with  
Optional Spice Kitchen  
(Adds 0 Sq. Ft. to Main Floor)



Partial Main Floor Plan with  
Optional Interior Fireplace  
(Adds 0 Sq. Ft. to Main Floor)



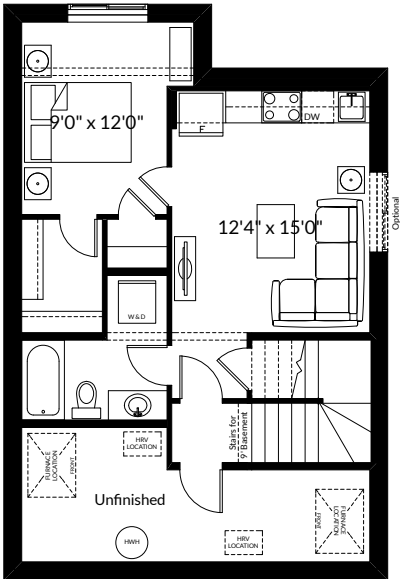
Partial Main Floor Plan for  
Luka - Kings Heights Elevations  
(Adds 0 Sq. Ft. to Main Floor)



Partial Main Floor Plan with  
Optional Finished Stair to  
Basement with Wall Openings  
(Adds 0 Sq. Ft. to Main Floor)

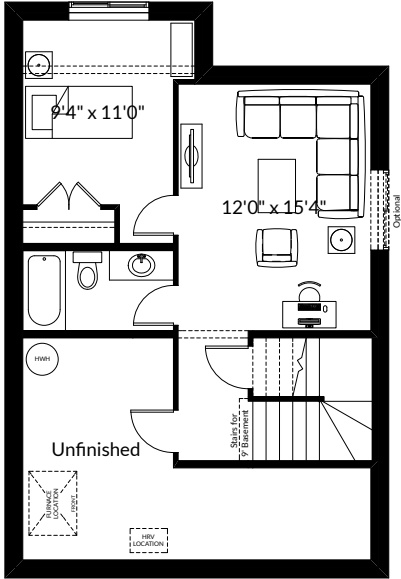
ADDITIONAL  
OPTIONS

# FLOOR PLAN OPTIONS



Optional Basement Suite Layout  
 512 Sq. Ft. (Finished Area)  
 (Must Add Optional Side Entry)

BASEMENT SUITE MAY NOT CONFORM  
 TO ALL MUNICIPALITIES.  
 LAND USE BY-LAW & CODE MUST BE  
 REVIEWED PRIOR TO ACCEPTANCE



Optional Basement Room Layout  
 457 Sq. Ft. (Finished Area)