

24'

THE JEFFERSON

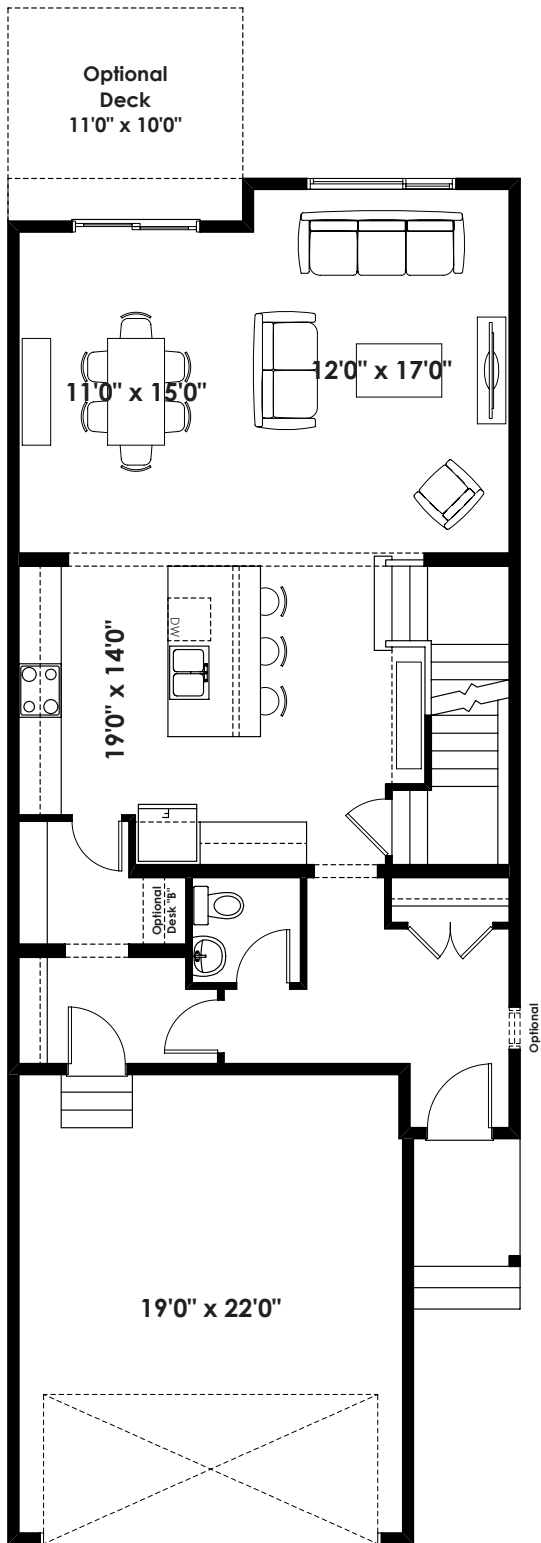
2,343+ SQ FT | 3 BED | 2.5 BATH



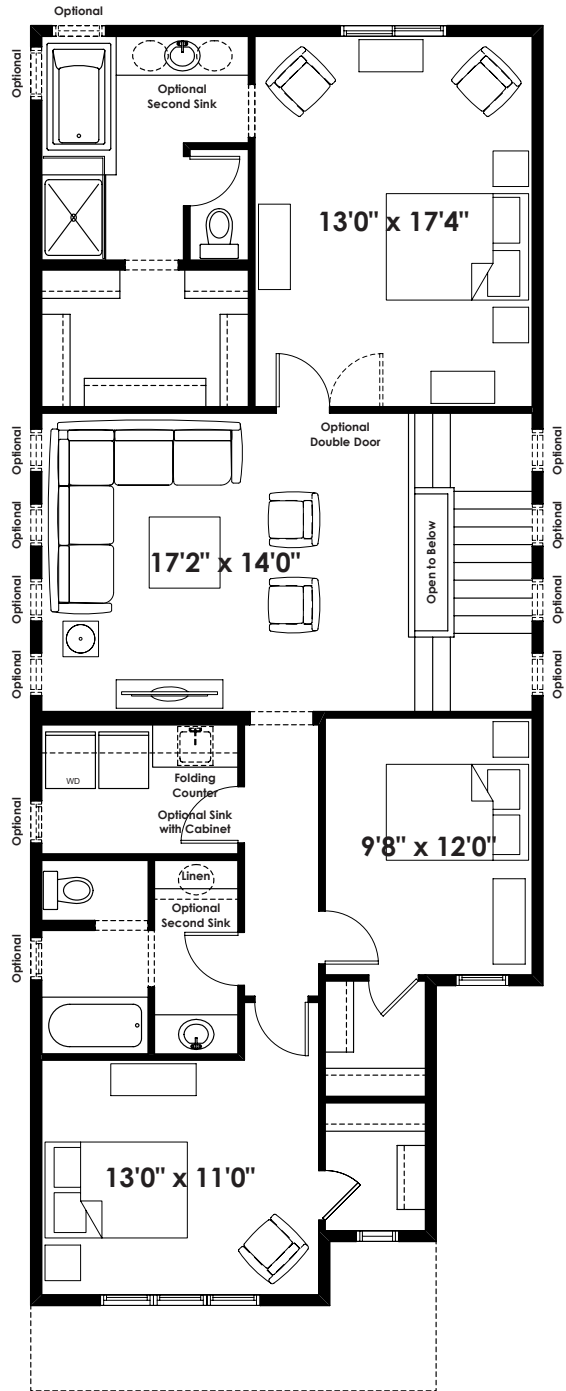
BETTER VALUE BY DESIGN
SINCE 1978 | HOMESBYAVI.COM

Homes by **AVI**

BASE FLOOR PLAN

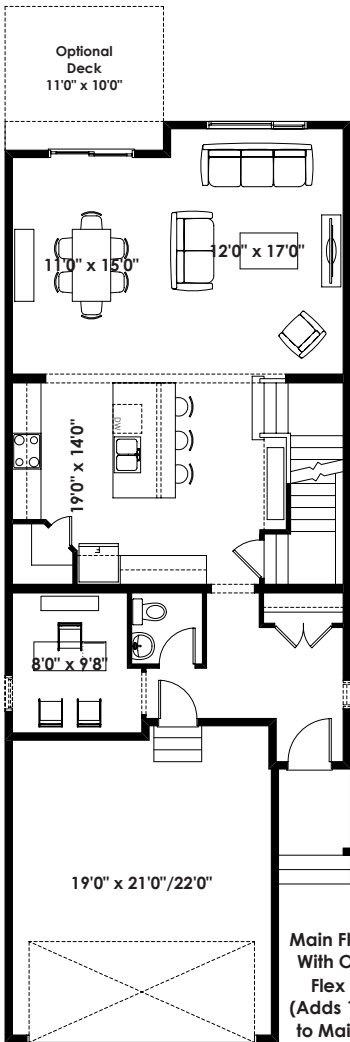


MAIN
1,003 SQ FT

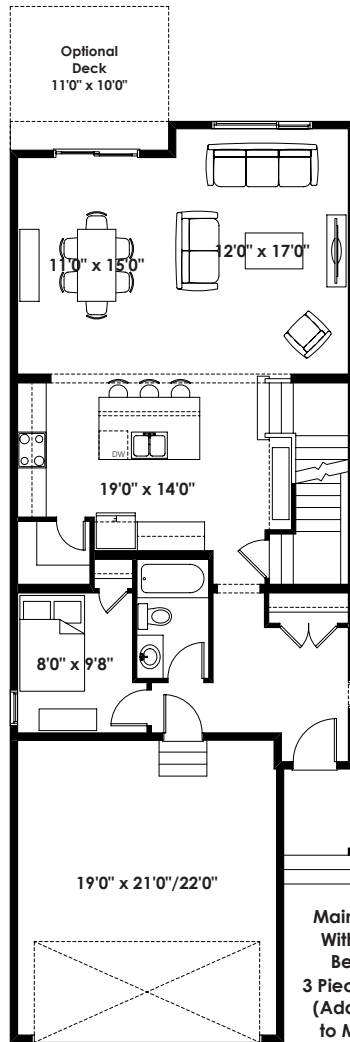


UPPER
1,340 SQ FT

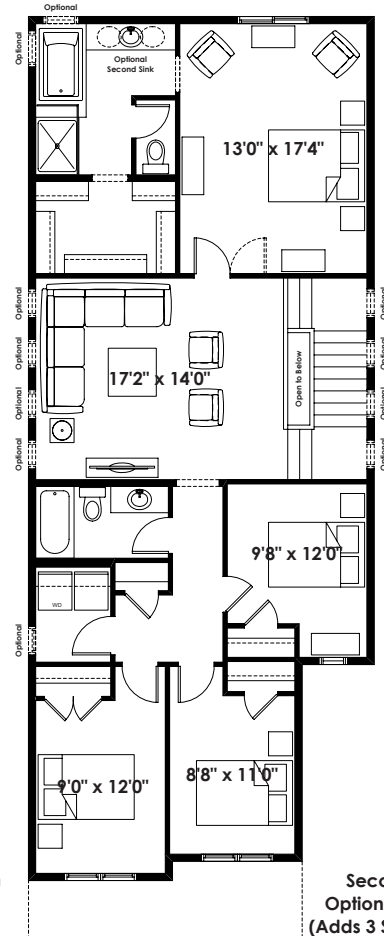
FLOOR PLAN OPTIONS



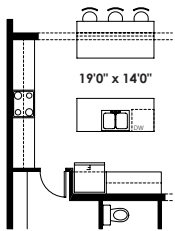
Main Floor Plan With Optional Flex Room
(Adds 10 Sq. Ft. to Main Floor)



Main Floor Plan With Optional Bedroom & 3 Piece Bathroom
(Adds 18 Sq. Ft. to Main Floor)



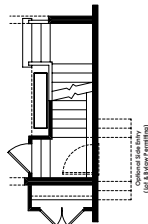
Second Floor Plan with Optional 4 Bedroom Layout
(Adds 3 Sq. Ft. to Second Floor)



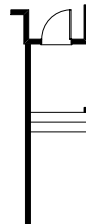
Partial Main Floor Plan with Optional Kitchen Islands
(Adds 0 Sq. Ft. to Main Floor)



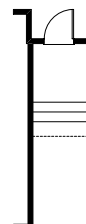
Partial Main Floor Plan with Optional Finished Stair to Basement
(Adds 0 Sq. Ft. to Main Floor)



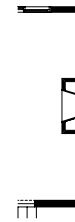
Partial Main Floor Plan with Optional Side Entry
(Adds 0 Sq. Ft. to Main Floor)



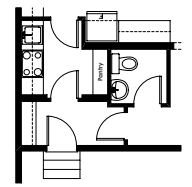
Partial Main Floor Plan for Vermilion Hill Elevations
(Adds 0 Sq. Ft. to Main Floor)



Partial Main Floor Plan for Lanark Elevation
(Adds 0 Sq. Ft. to Main Floor)



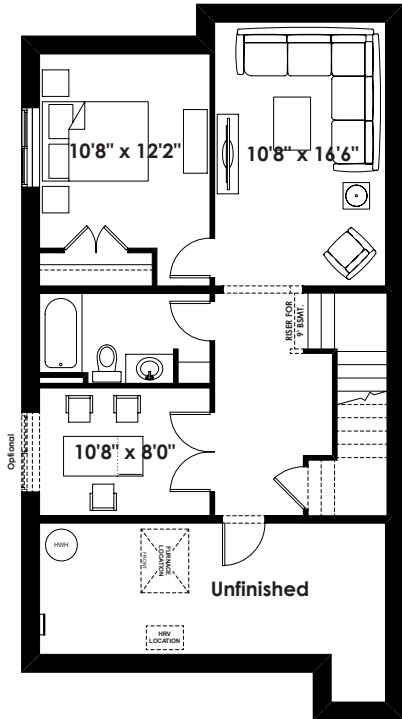
Partial Main Floor Plan with Optional Interior Fireplace
(Adds 0 Sq. Ft. to Main Floor)



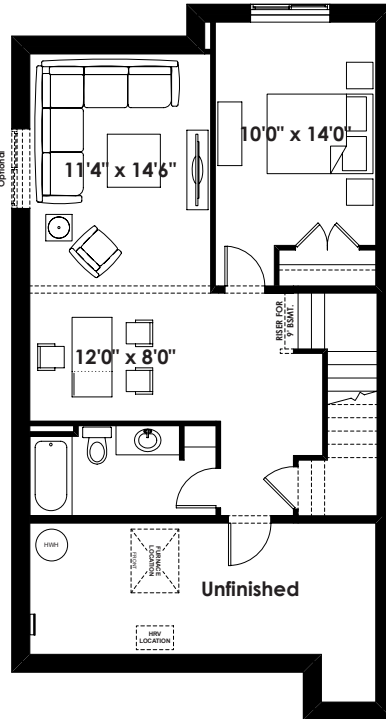
Partial Main Floor Plan with Optional Spice Kitchen
(Adds 0 Sq. Ft. to Main Floor)

ADDITIONAL OPTIONS

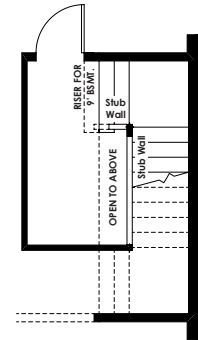
FLOOR PLAN OPTIONS



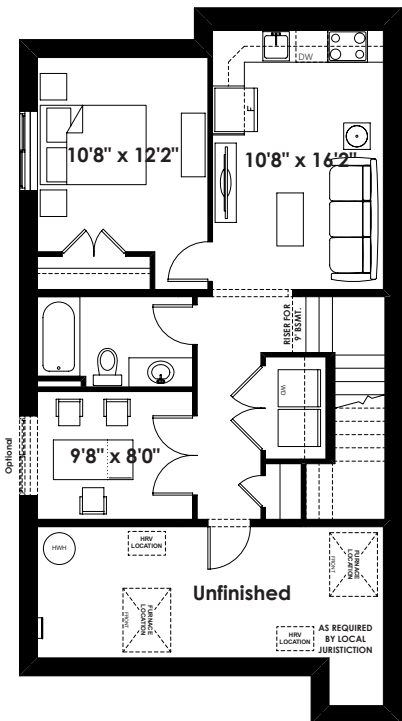
Optional Basement Room Layout
638 Sq. Ft. (Finished Area)



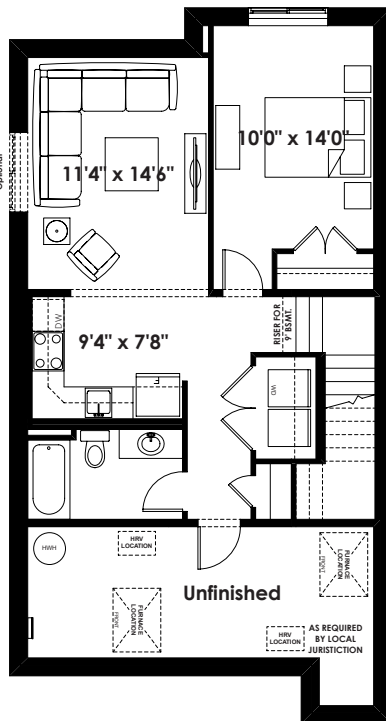
Alternate Optional Basement Room Layout
638 Sq. Ft. (Finished Area)



Basement Landing for Optional Finished Stair to Basement with Opening (Must Add 60 Sq. Ft. of Finished Basement Area Minimum)



Optional Basement Suite Layout
638 Sq. Ft. (Finished Area)



Alternate Optional Basement Suite Layout
638 Sq. Ft. (Finished Area)

Prices are subject to change without notice. Actual floor plan, elevation, and square footage may not be exactly as shown. Square footage is measured to Alberta Building Code (ABC) regulations. Builder reserves the right to make changes without notice. E&OE.