

24'

THE HUGHES

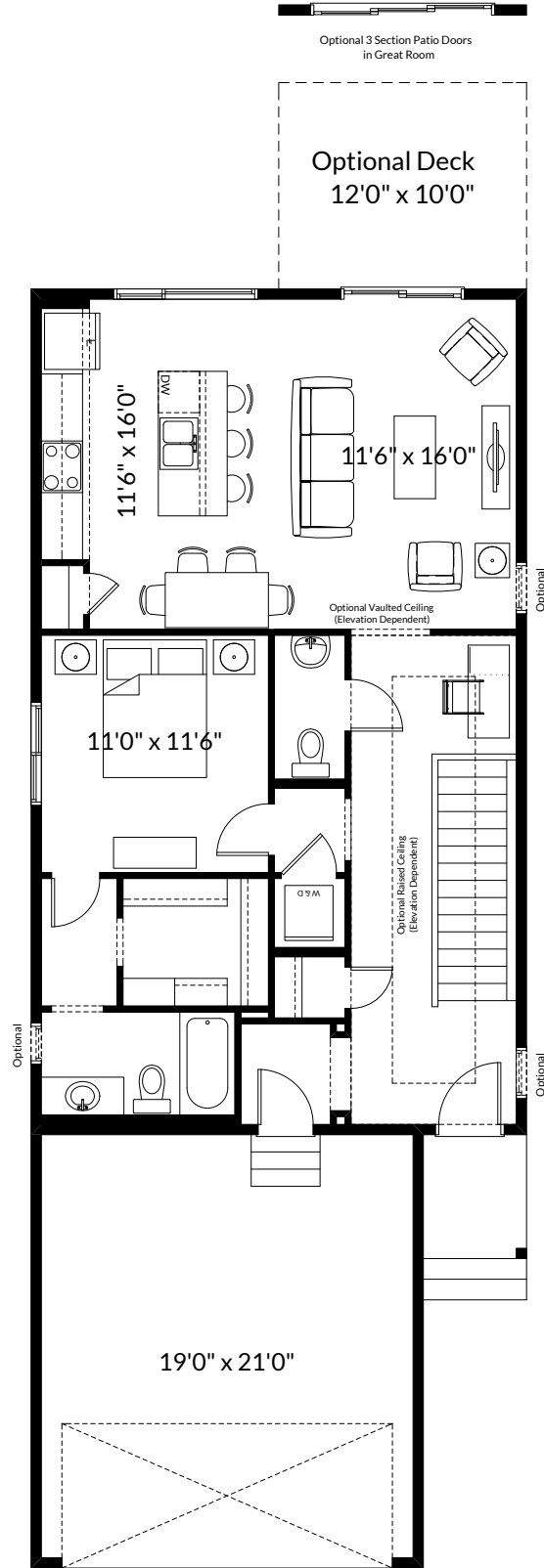
984+ SQ FT | 1 BED | 1.5 BATH



BETTER VALUE BY DESIGN
SINCE 1978 | HOMESBYAVI.COM

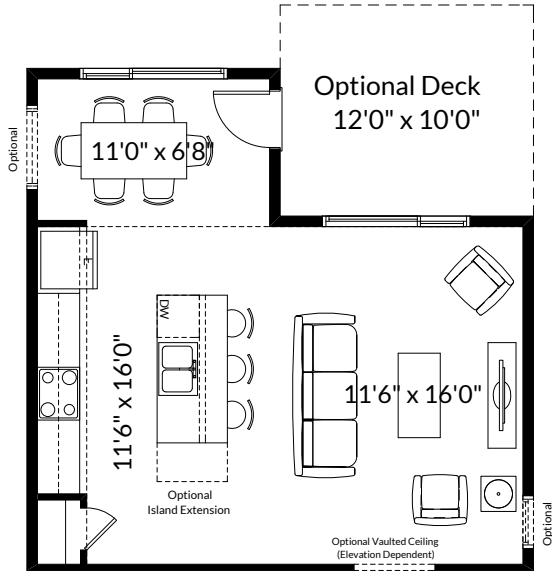
Homes by **AVI**

BASE FLOOR PLAN

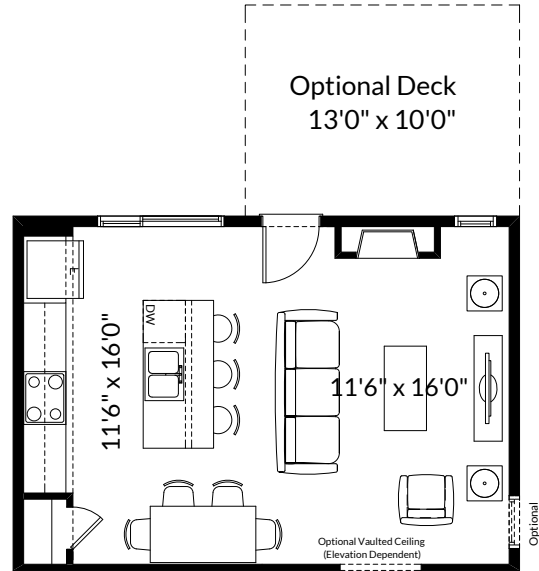


MAIN
984 SQ FT

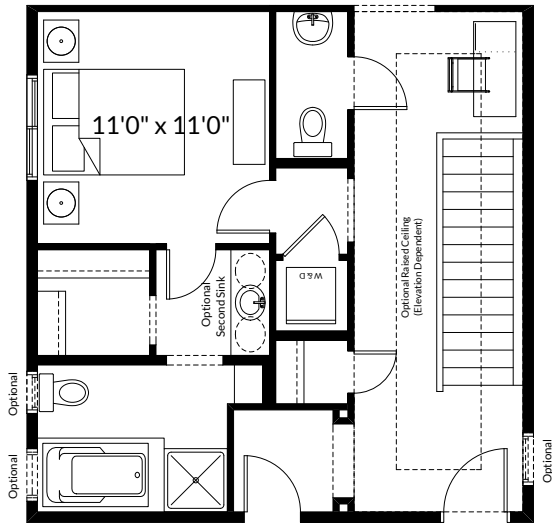
FLOOR PLAN OPTIONS



Partial Main Floor Plan
with Optional Nook Extension
(Adds 84 Sq. Ft. to Main Floor)



Partial Main Floor Plan with
Optional Interior Fireplace to Great Room
(Adds 1'-0" in Width to Optional Deck;
Adds 0 Sq. Ft. to Main Floor)



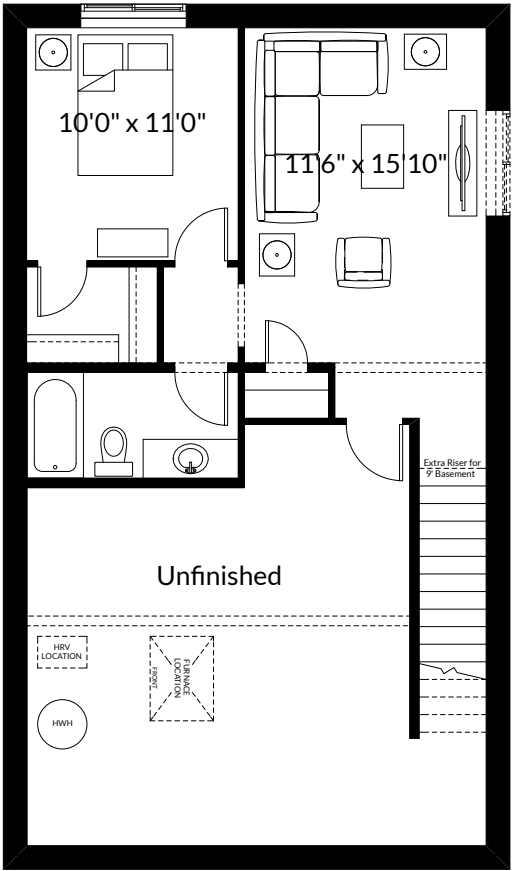
Partial Main Floor Plan
with Optional Upgraded Ensuite
(Adds 0 Sq. Ft. to Main Floor)



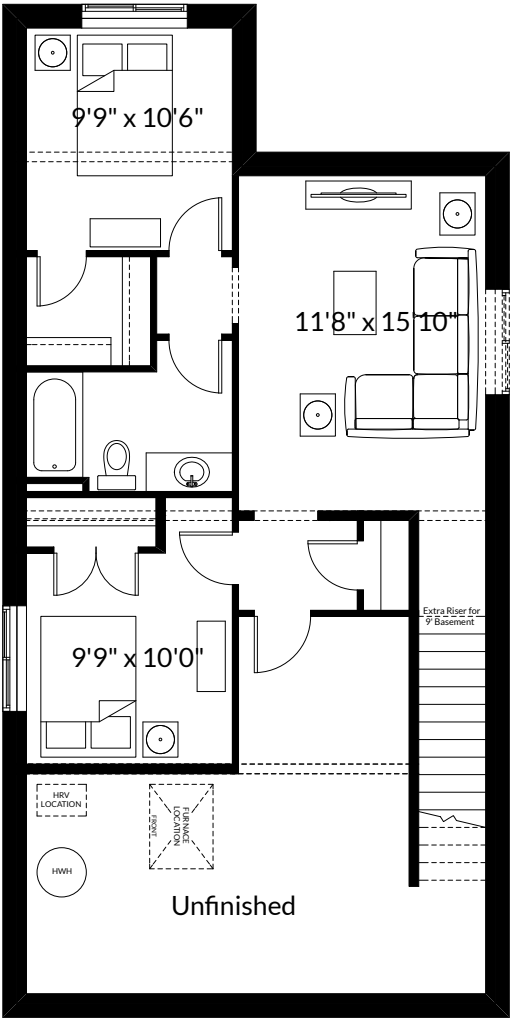
Partial Main Floor Plan for
Livingston Elevations
(Adds 0 Sq. Ft. to Main Floor)

ADDITIONAL
OPTIONS

FLOOR PLAN OPTIONS



Optional Basement Room Layout
480 Sq. Ft. (Finished Area)



Optional Basement Room Layout for
use with Optional Nook Extension
640 Sq. Ft. (Finished Area)

Prices are subject to change without notice. Actual floor plan, elevation, and square footage may not be exactly as shown. Square footage is measured to Alberta Building Code (ABC) regulations. Builder reserves the right to make changes without notice. E&OE.