

22'

THE MAURICE

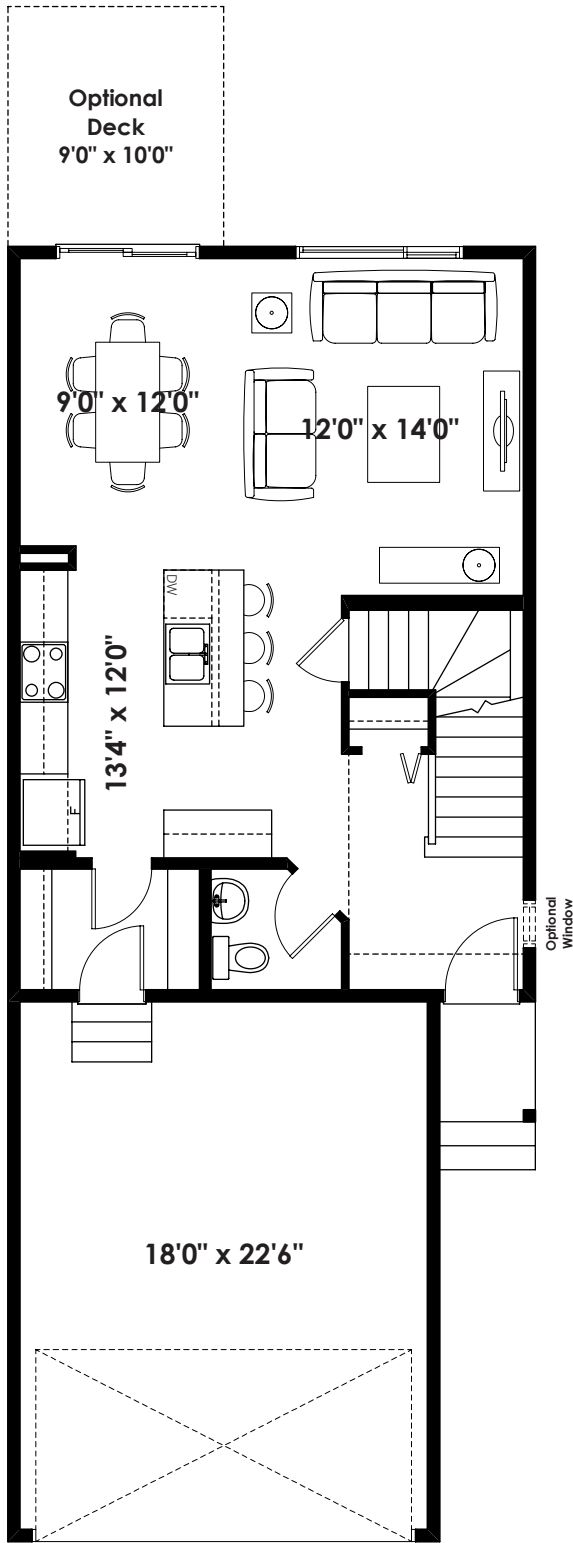
1,718+ SQ FT | 3 BED | 2.5 BATH



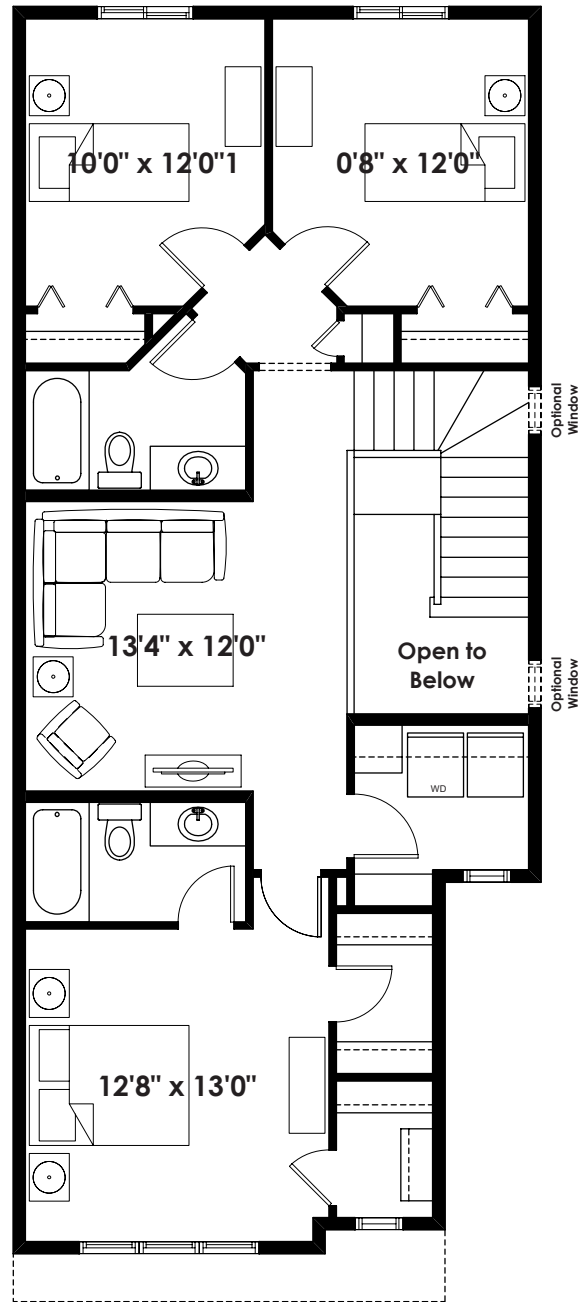
BETTER VALUE BY DESIGN
SINCE 1978 | HOMESBYAVI.COM

Homes by **AVI**

BASE FLOOR PLAN

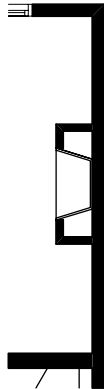


MAIN
693 SQ FT

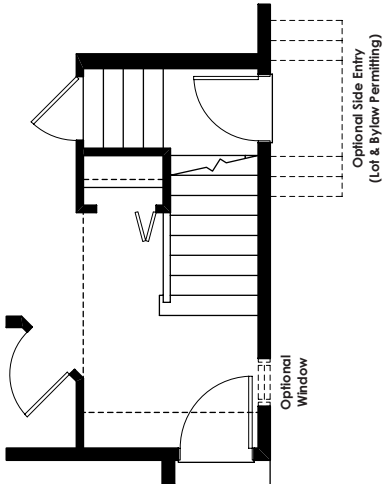


UPPER
1,025 SQ FT

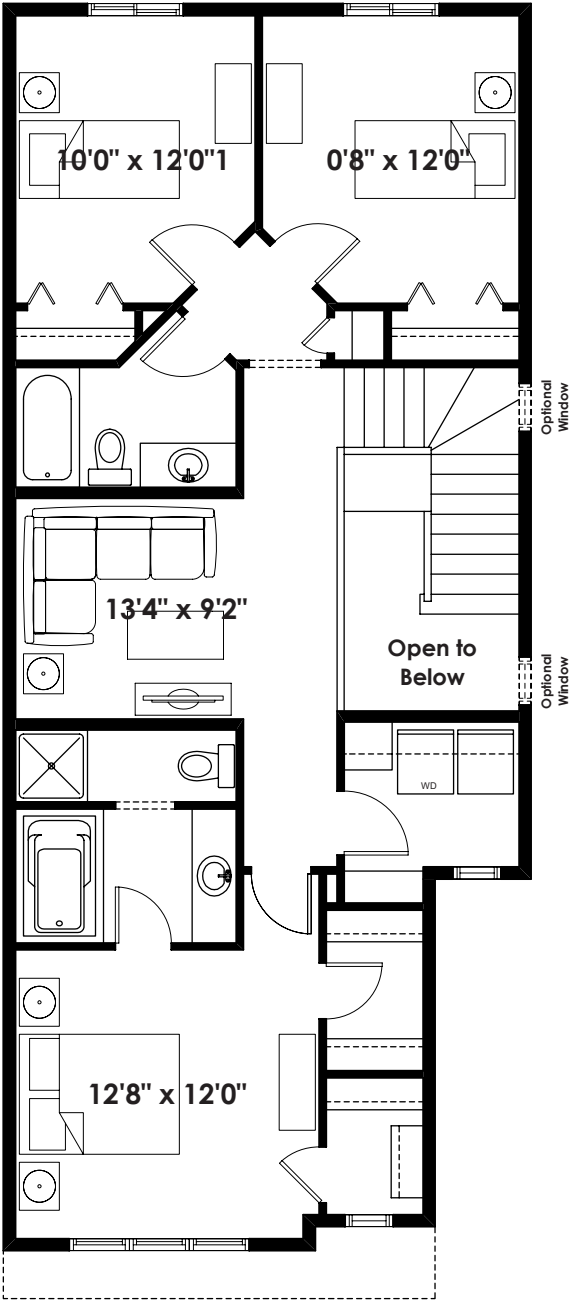
FLOOR PLAN OPTIONS



Partial Main Floor Plan with Optional Interior Fireplace (Adds 0 Sq. Ft. to Main Floor)



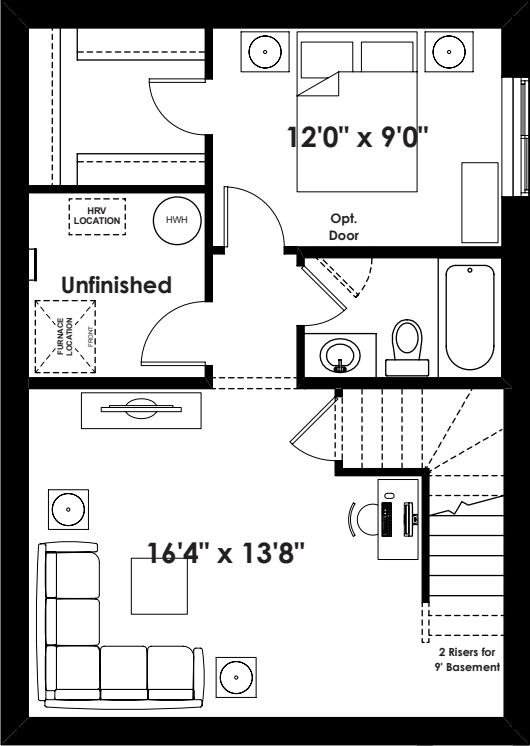
Partial Main Floor Plan with Optional Side Entry (Adds 0 Sq. Ft. to Main Floor)



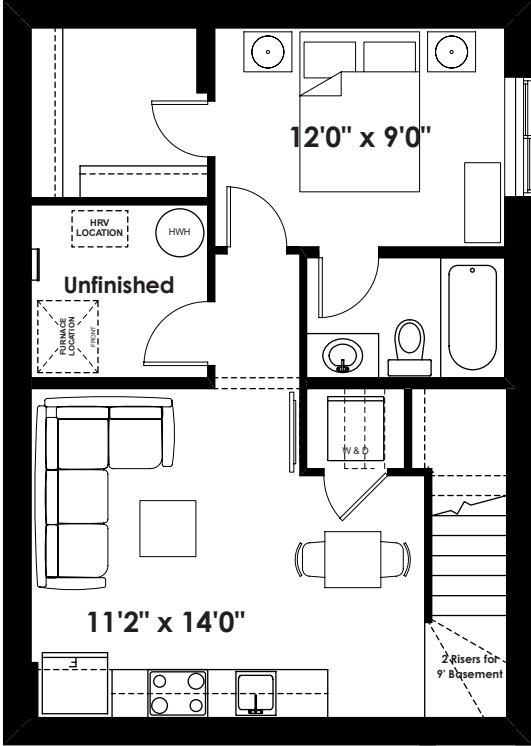
Second Floor Plan with Optional 4 Piece Ensuite 1025 Sq. Ft.

ADDITIONAL OPTIONS

FLOOR PLAN OPTIONS



**Optional Basement Room Layout
510 Sq. Ft. (Finished Area)**



**Optional Basement Suite Layout
473 Sq. Ft. (Finished Area;
Must Add Optional Side Entry)**

BASEMENT SUITE MAY NOT CONFORM
TO ALL MUNICIPALITIES;
LAND USE BY-LAW & CODE MUST BE
REVIEWED PRIOR TO ACCEPTANCE

Prices are subject to change without notice. Actual floor plan, elevation, and square footage may not be exactly as shown. Square footage is measured to Alberta Building Code (ABC) regulations. Builder reserves the right to make changes without notice. E&OE.