

22'

THE LOCHLAN

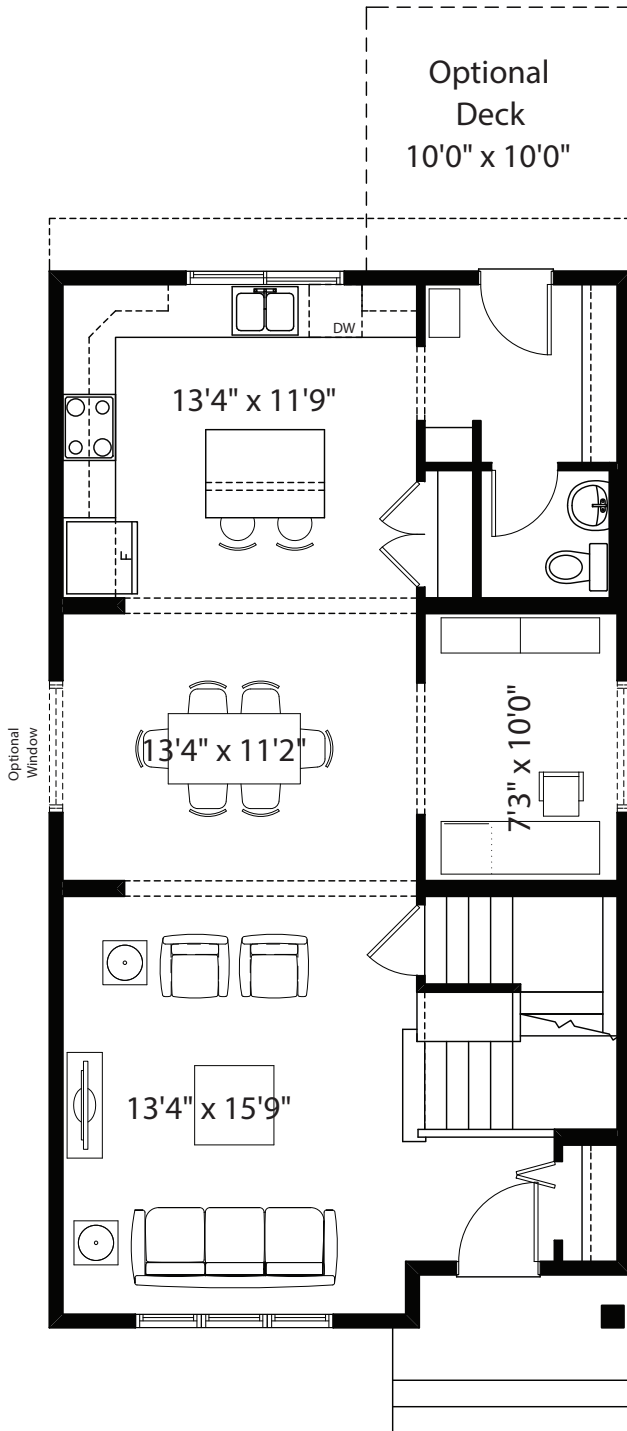
1,767+ SQ FT | 3 BED | 2.5 BATH



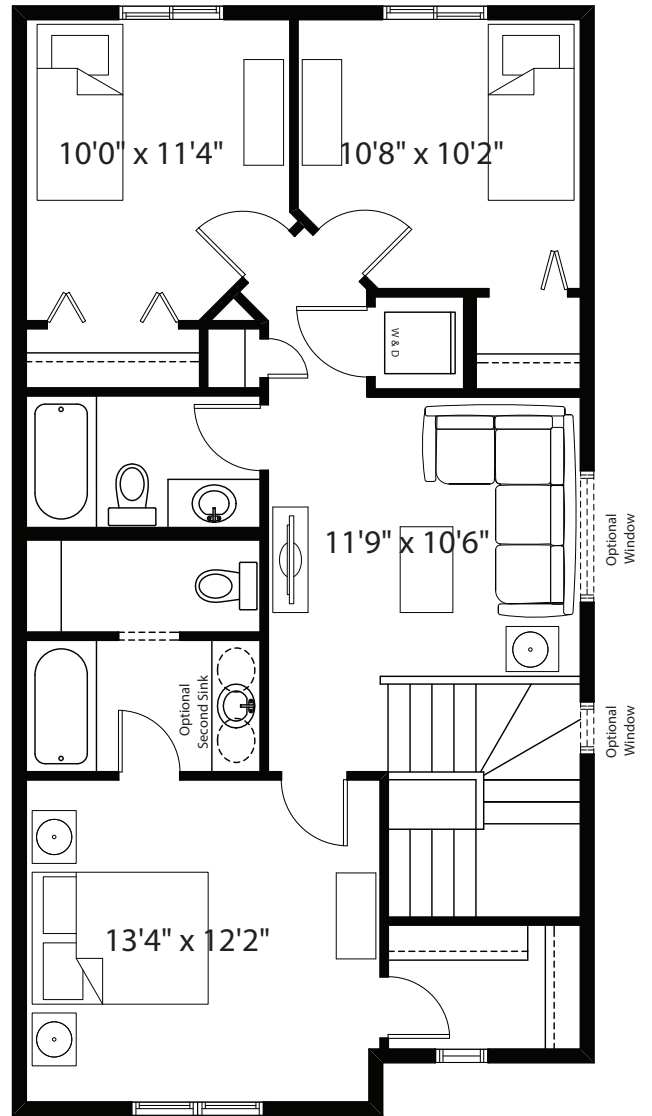
BETTER VALUE BY DESIGN
SINCE 1978 | HOMESBYAVI.COM

Homes by **AVI**

BASE FLOOR PLAN

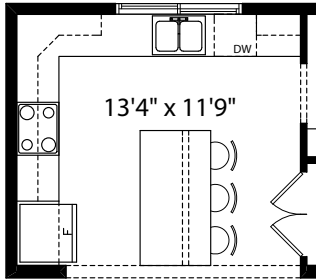


MAIN
864 SQ FT

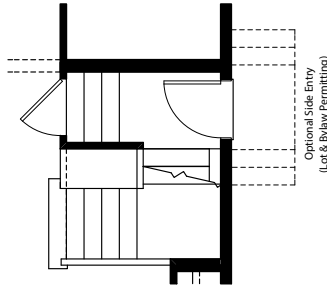


UPPER
903 SQ FT

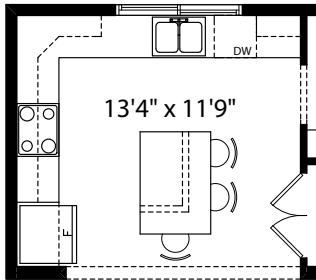
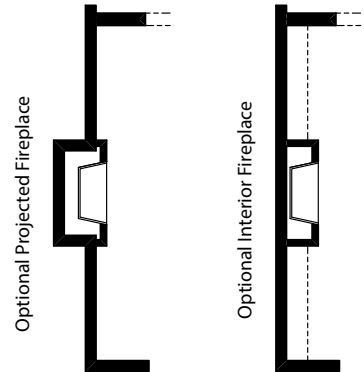
FLOOR PLAN OPTIONS



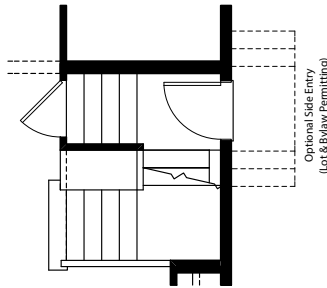
Optional Kitchen Island #2
(Adds 0 Sq. Ft. to Main Floor)



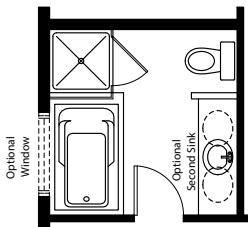
Partial Main Floor Plan
with Optional Side Entry
w/ 4 Risers to landing
(To suit grades)
(Adds 0 Sq. Ft. to Main Floor)



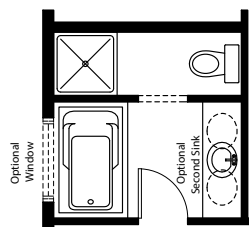
Optional Kitchen Island #1
(Adds 0 Sq. Ft. to Main Floor)



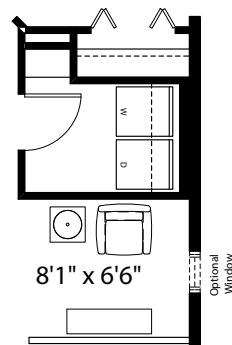
Partial Main Floor Plan
with Optional Side Entry
(Adds 0 Sq. Ft. to Main Floor)



Partial Second Floor Plan with
Upgraded Ensuite #2
(Adds 0 Sq. Ft. to Second Floor)



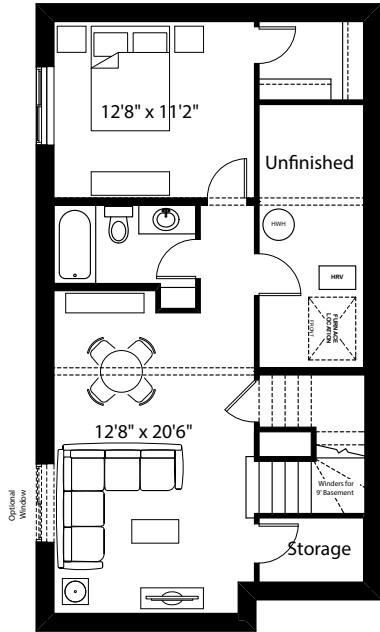
Partial Second Floor Plan with
Upgraded Ensuite #1
(Adds 0 Sq. Ft. to Second Floor)



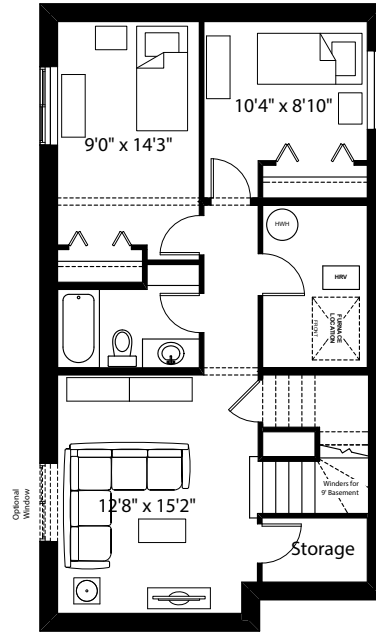
Partial Second Floor Plan
with Laundry Room
(Adds 0 Sq. Ft. to Second Floor)

ADDITIONAL
OPTIONS

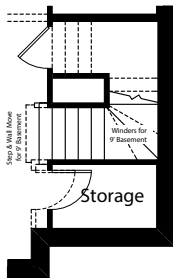
FLOOR PLAN OPTIONS



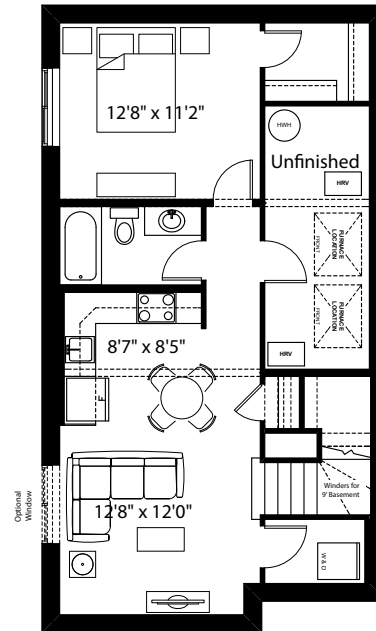
LOCHLAN
Optional Basement Room Layout
595 Sq. Ft. (Finished)



LOCHLAN
Optional Two Bedroom
Basement Room Layout
640 Sq. Ft. (Finished)



Partial Foundation Plan
with Optional Side Entry
w/ 4 Risers to landing
(To suit grades)
(Adds 0 Sq.Ft.)



LOCHLAN
Optional Basement Suite Layout
595 Sq. Ft. (Finished;
Must Add Optional Side Entry)

BASEMENT SUITE MAY NOT CONFORM
TO ALL MUNICIPALITIES;
LAND USE BY-LAW & CODE MUST BE
REVIEWED PRIOR TO ACCEPTANCE