

20'

THE SHELDON

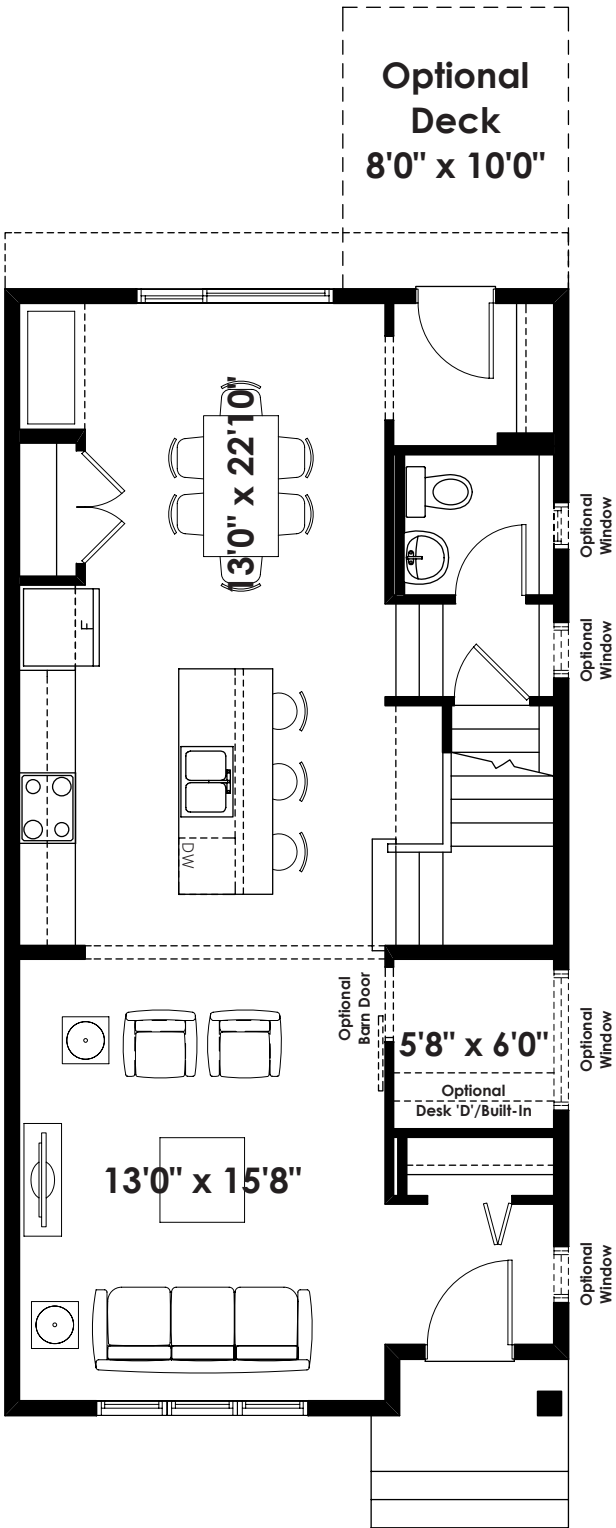
1,608+ SQ FT | 3 BED | 2.5 BATH



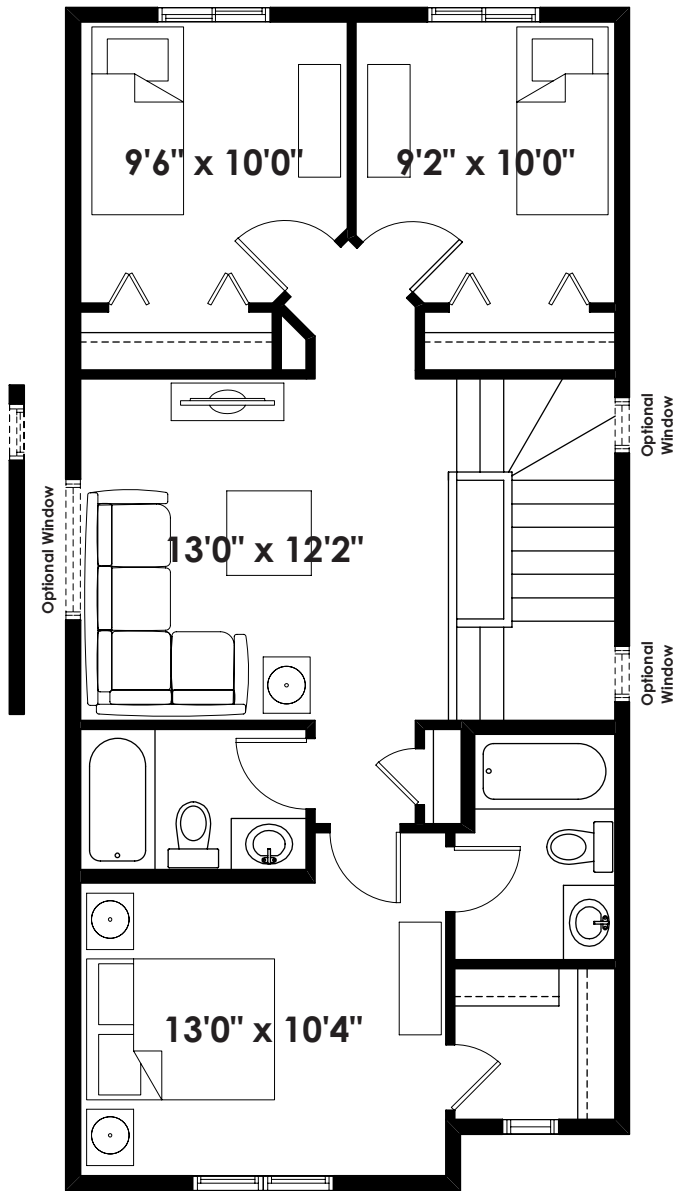
BETTER VALUE BY DESIGN
SINCE 1978 | HOMESBYAVI.COM

Homes by **AVI**

BASE FLOOR PLAN

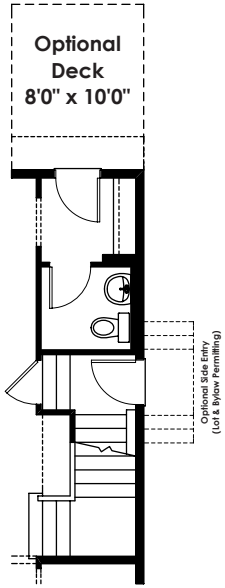


MAIN
788 SQ FT

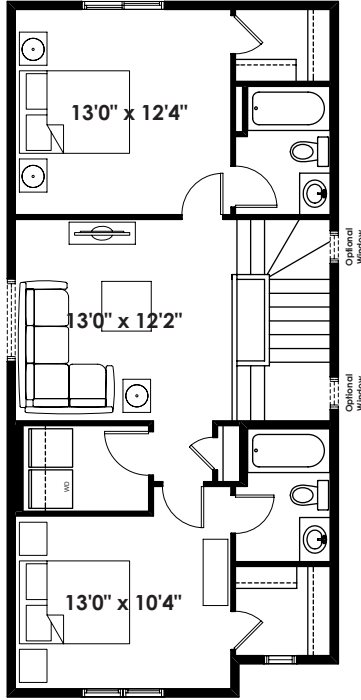
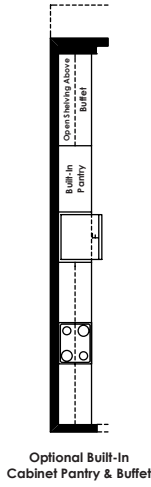


UPPER
820 SQ FT

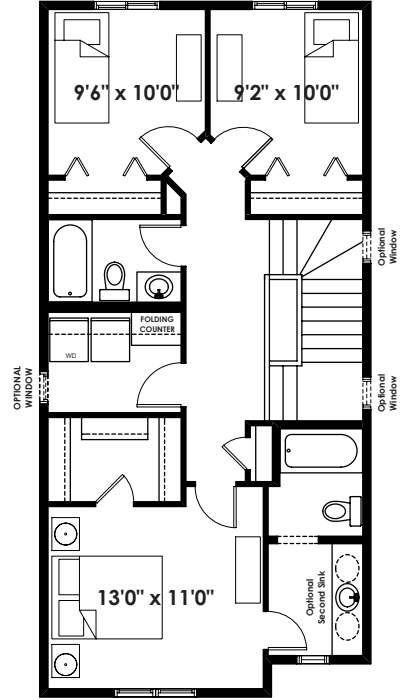
FLOOR PLAN OPTIONS



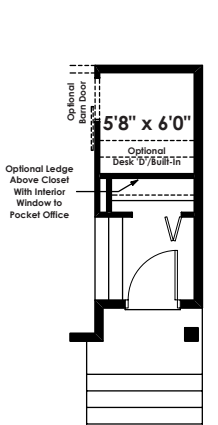
Partial Main Floor Plan with Optional Side Entry (Adds 0 Sq. Ft. to Main Floor)



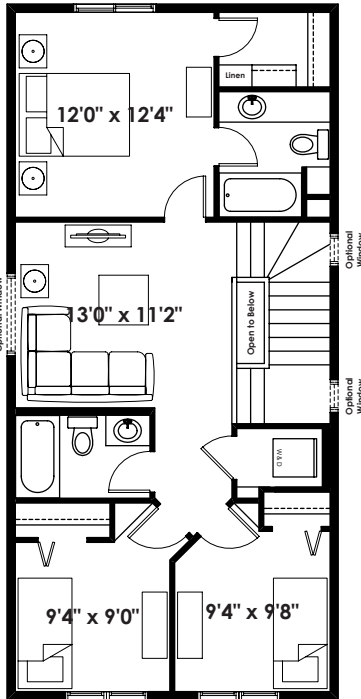
O'REILLY
Second Floor Plan
(Adds 0 Sq. Ft. to Second Floor)



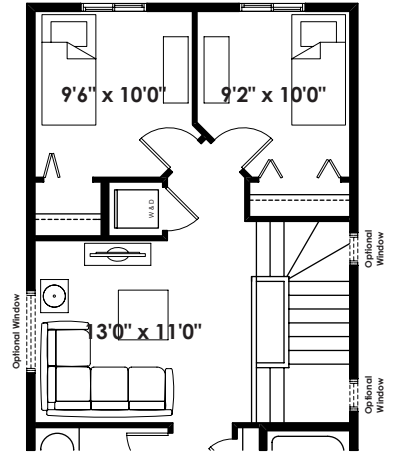
IAFRATE
Second Floor Plan
(Adds 0 Sq. Ft. to Second Floor)



Dropped Entry (Southfork Only) (Adds 0 Sq. Ft. to Main Floor)



BALLARD
Second Floor Plan
(Adds 12 Sq. Ft. to Second Floor)

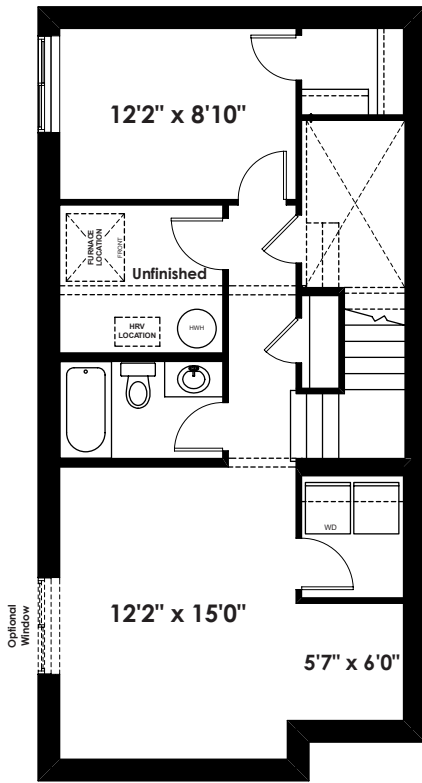


Partial JEFFRIES Second Floor Plan With Optional Laundry Closet (Adds 0 Sq. Ft. to Second Floor)

NOTE: THIS OPTIONAL SECOND FLOOR ONLY AVAILABLE WITH SELECT FLAT FRONT ELEVATIONS

ADDITIONAL OPTIONS

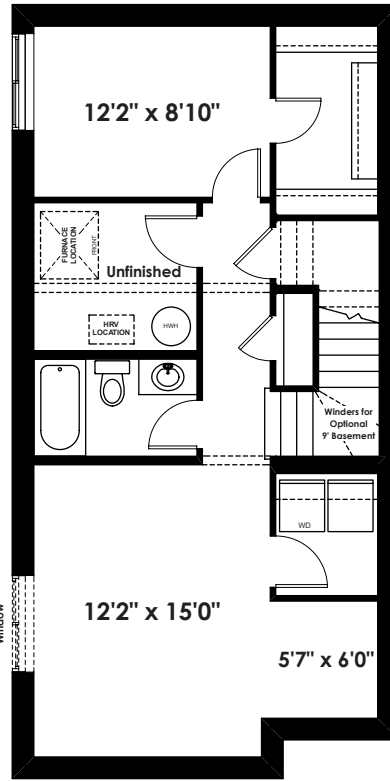
FLOOR PLAN OPTIONS



SHELDON

**Optional Basement Room Layout
553 Sq. Ft. (Finished)**

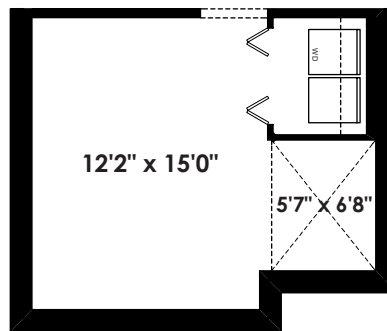
Basement Laundry Room
(Including Washer & Dryer)
Deleted if Optional Upper
Floor With Laundry is Selected



SHELDON

**Optional Basement Room Layout
For Optional Side Entry
583 Sq. Ft. (Finished)**

Basement Laundry Room
(Including Washer & Dryer)
Deleted if Optional Upper
Floor With Laundry is Selected



SHELDON

**Partial Optional Basement Room Layout
(Southfork Only)
558 Sq. Ft. (Finished)**

Basement Laundry Room
(Including Washer & Dryer)
Deleted if Optional Upper
Floor With Laundry is Selected