

20'

THE DOUGLAS

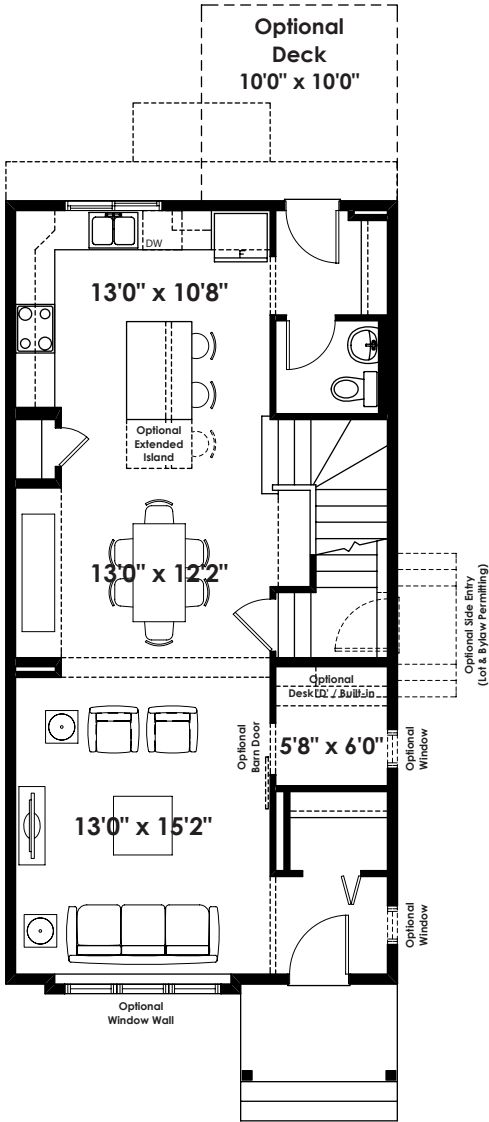
1,948+ SQ FT | 3 BED | 2.5 BATH



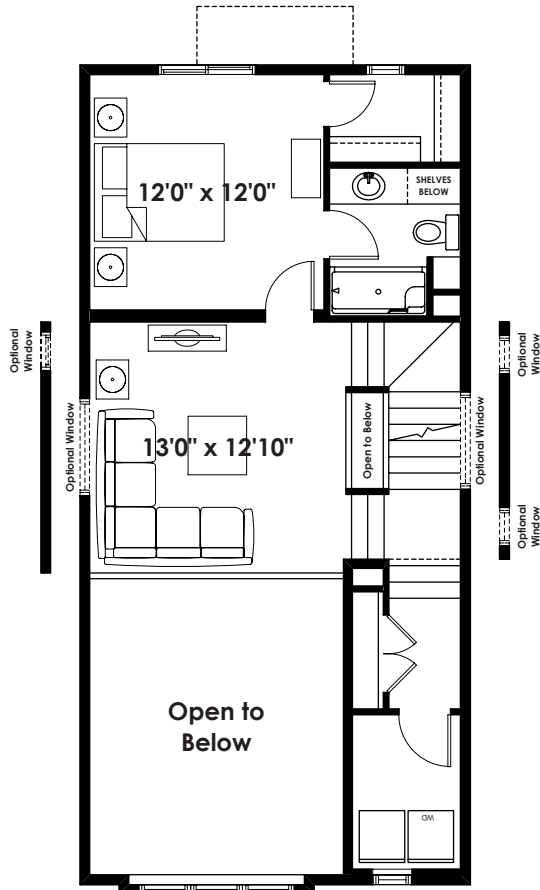
BETTER VALUE BY DESIGN
SINCE 1978 | HOMESBYAVI.COM

Homes by **AVI**

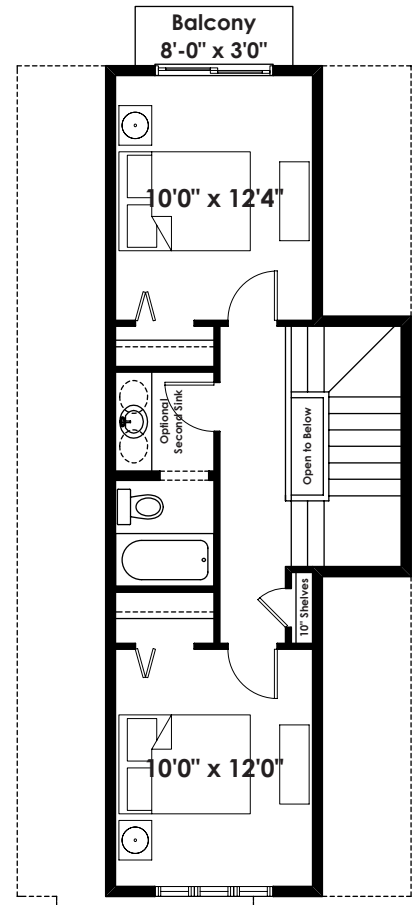
BASE FLOOR PLAN



MAIN
800 SQ FT

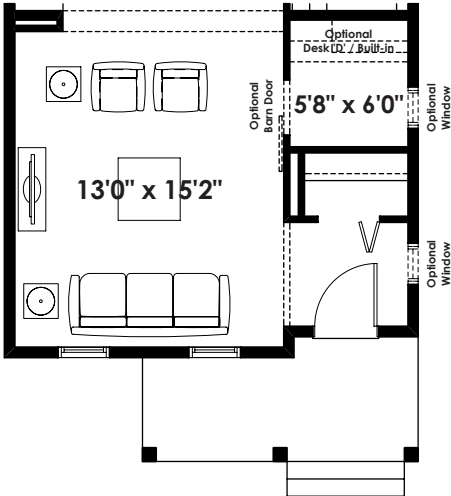


UPPER
635 SQ FT

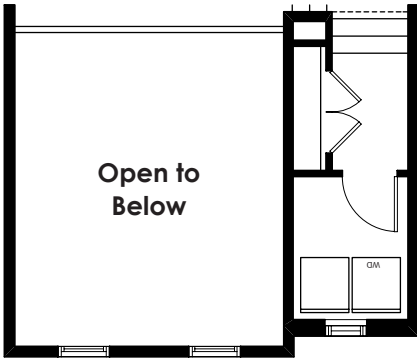
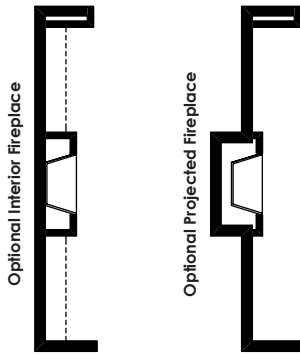


THIRD
513 SQ FT

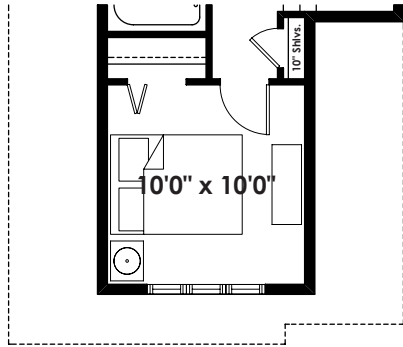
FLOOR PLAN OPTIONS



**Partial DOUGLAS Main Floor Plan
for Braeden Elevation
(Removes 6 Sq. Ft. from Main Floor)**



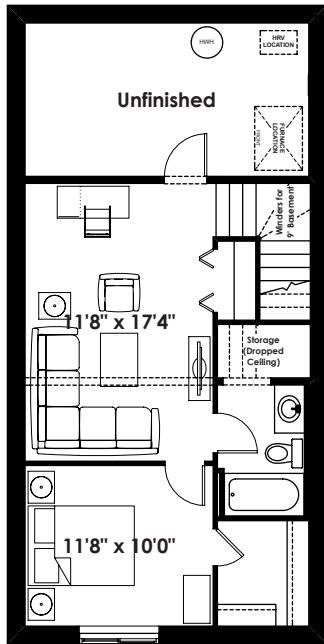
**Partial BRENT Second Floor Plan
for Braeden Elevation
(Removes 6 Sq. Ft. from Second Floor)**



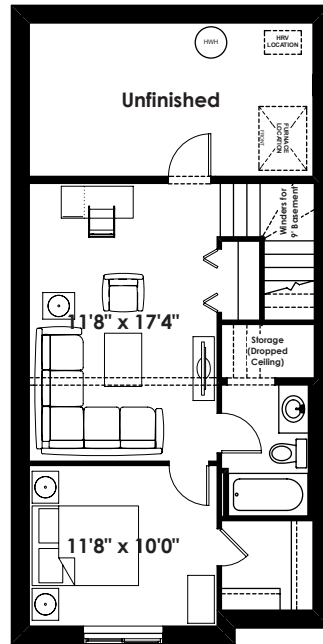
**Partial BOYD Third Floor Plan
for Braeden Elevation
(Removes 27 Sq. Ft. from Third Floor)**

ADDITIONAL
OPTIONS

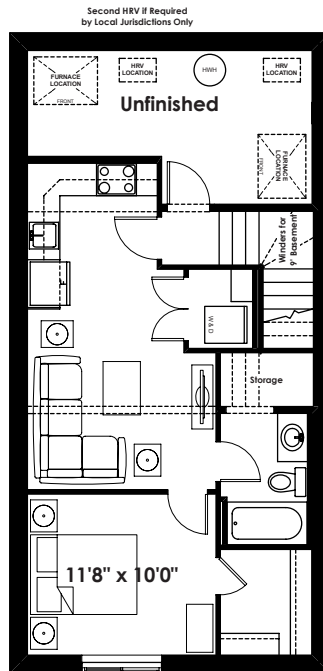
FLOOR PLAN OPTIONS



**DOUGLAS Optional Basement Room
Layout for Anders Elevation
492 Sq. Ft. (Finished)**



**DOUGLAS Optional Basement Room
Layout for Braeden Elevation
(Removes 6 Sq. Ft. from Finished Area)**



**DOUGLAS Optional Basement Suite
Layout for Anders Elevation
519 Sq. Ft. (Finished;
Must Add Optional Side Entry)**

BASEMENT SUITE MAY NOT CONFORM
TO ALL MUNICIPALITIES.
LAND USE BY-LAW & CODE MUST BE
REVIEWED PRIOR TO ACCEPTANCE