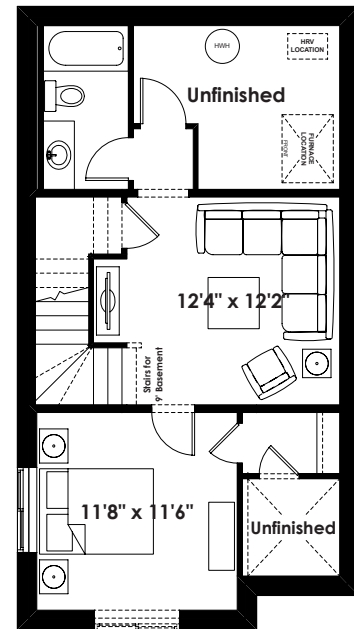


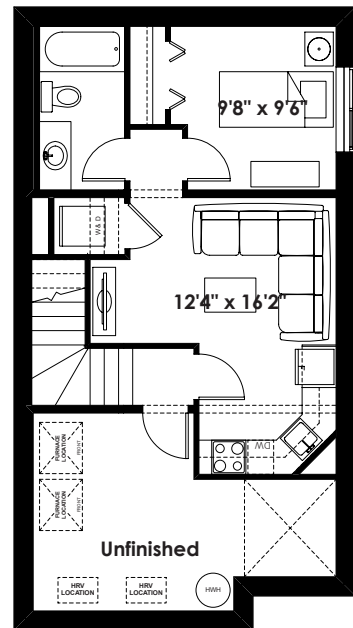
FLOOR PLAN OPTIONS



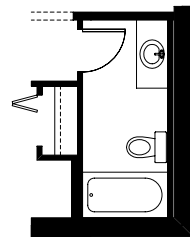
**Optional 1 Bedroom
Basement Room Layout
399 Sq. Ft. (Finished)**



**Optional 1 Bedroom
Basement Room Layout
With Dropped Entry (Southfork Only)
439 Sq. Ft. (Finished)**



**Optional 1 Bedroom
Basement Suite Layout
With Dropped Entry (Southfork Only)
419 Sq. Ft. (Finished Area;
Must Add Optional Side Entry;
Must Add 9' Foundation Walls)**



**Partial Basement Room Layout
for Flat Front Elevation
(Adds 12 Sq. Ft.)**

20'

THE ALEXANDER

1,468+ SQ FT | 3 BED | 2.5 BATH



Prices are subject to change without notice. Actual floor plan, elevation, and square footage may not be exactly as shown. Square footage is measured to Alberta Building Code (ABC) regulations. Builder reserves the right to make changes without notice. E&OE.



BETTER VALUE BY DESIGN
SINCE 1978 | HOMESBYAVI.COM



