

SHOW  
HOME

# THE JADE

1,378 SQ FT | 3 BED | 2.5 BATH

2103 MAPLE ROAD



## THIS DUPLEX HOME FEATURES

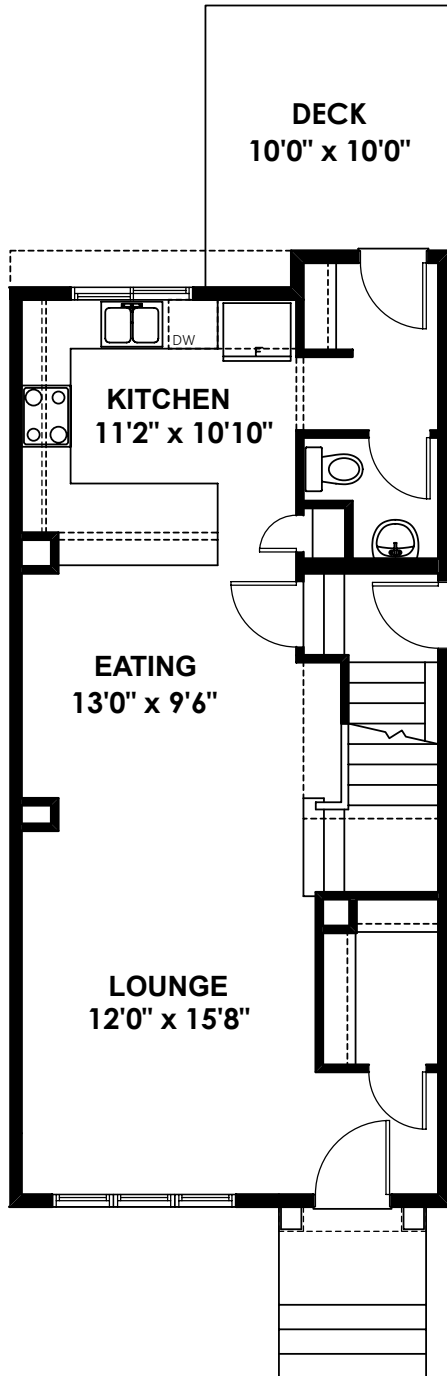
- Open Concept with Rear Kitchen
- Quartz Countertops Throughout
- Feature Walls in Bedrooms
- Side Entrance to Basement
- Large Laundry Room on Second Floor
- Full Landscaping Including Rear Deck & BBQ Gas Line
- Double detached garage



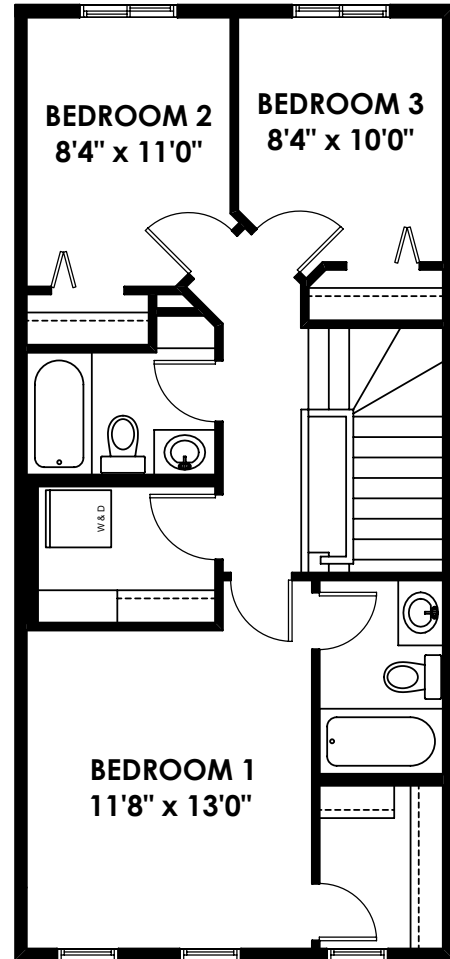
BETTER VALUE BY DESIGN  
SINCE 1978 | HOMESBYAVI.COM

Homes by **AVI**

## FLOOR PLAN



**MAIN**  
685 SQ FT



**UPPER**  
693 SQ FT

For more information or to book an appointment please contact us at **587.525.5236**

Prices are subject to change without notice. Actual floor plan, elevation, and square footage may not be exactly as shown. Square footage is measured to Alberta Building Code (ABC) regulations. Builder reserves the right to make changes without notice. E&OE.

Homes by **AVI**