

18'

THE EZRA

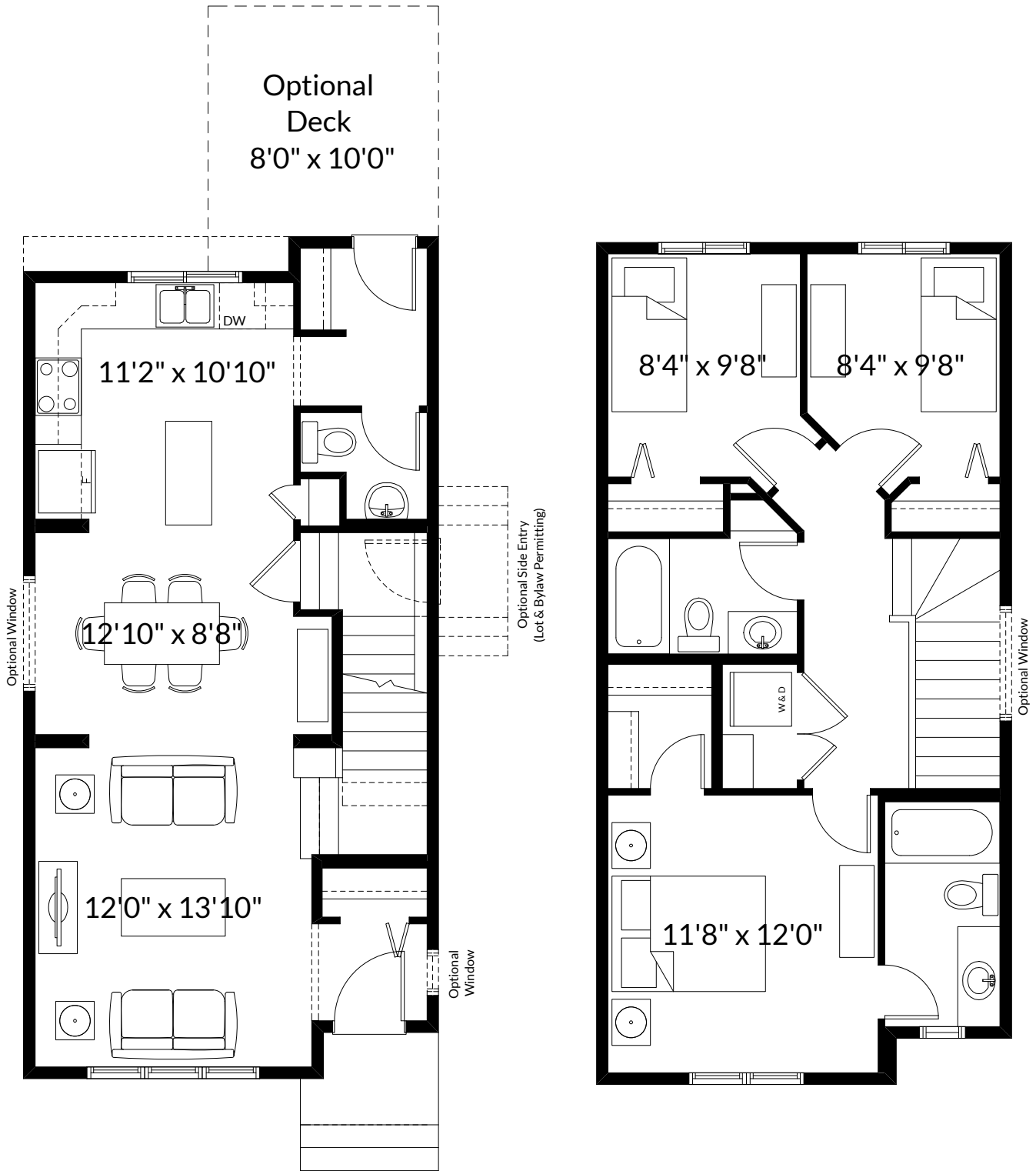
1,277+ SQ FT | 3 BED | 2.5 BATH



BETTER VALUE BY DESIGN
SINCE 1978 | HOMESBYAVI.COM

Homes by **AVI**

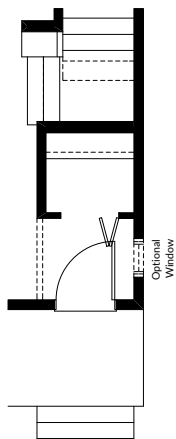
BASE FLOOR PLAN



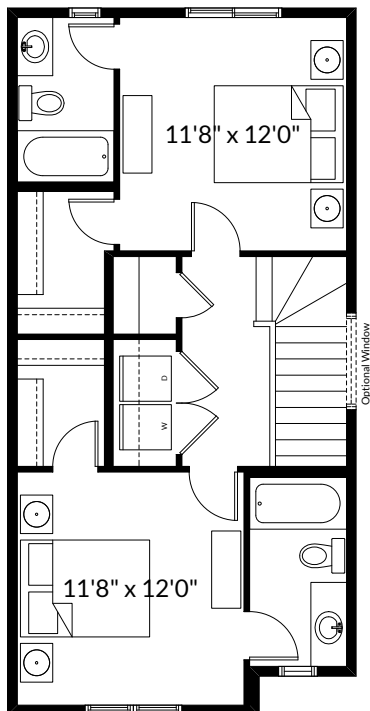
MAIN
630 SQ FT

UPPER
647 SQ FT

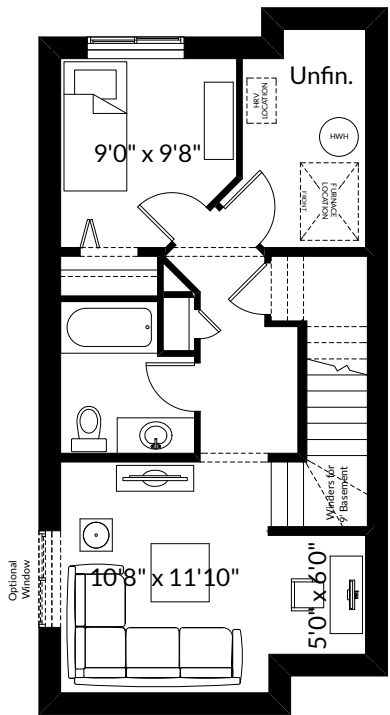
FLOOR PLAN OPTIONS



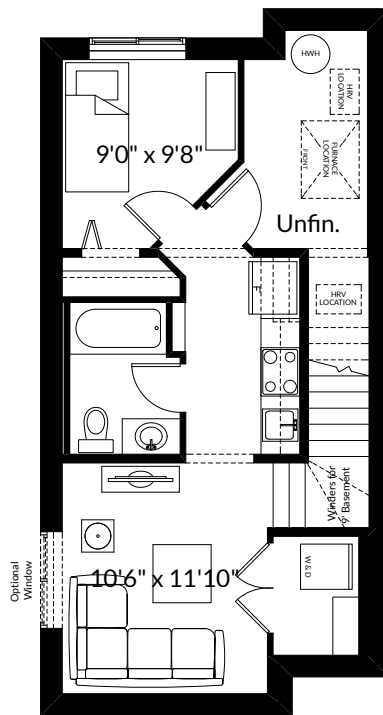
Partial Main Floor for Flat Front Elevation (Adds 10 Sq. Ft. to Main Floor)



EMMETT
Second Floor Plan 647 Sq. Ft.
Double Master Suite Upper Floor



EZRA
Optional Basement Room Layout
417 Sq. Ft. (Finished)



EZRA
Optional Basement Suite Layout
421 Sq. Ft. (Finished;
Must Add Optional Side Entry)

BASEMENT SUITE MAY NOT CONFORM TO ALL MUNICIPALITIES.
LAND USE BY-LAW & CODE MUST BE REVIEWED PRIOR TO ACCEPTANCE

ADDITIONAL
OPTIONS



Prices are subject to change without notice. Actual floor plan, elevation, and square footage may not be exactly as shown. Square footage is measured to Alberta Building Code (ABC) regulations. Builder reserves the right to make changes without notice. E&OE.

