

24'

THE LUKA

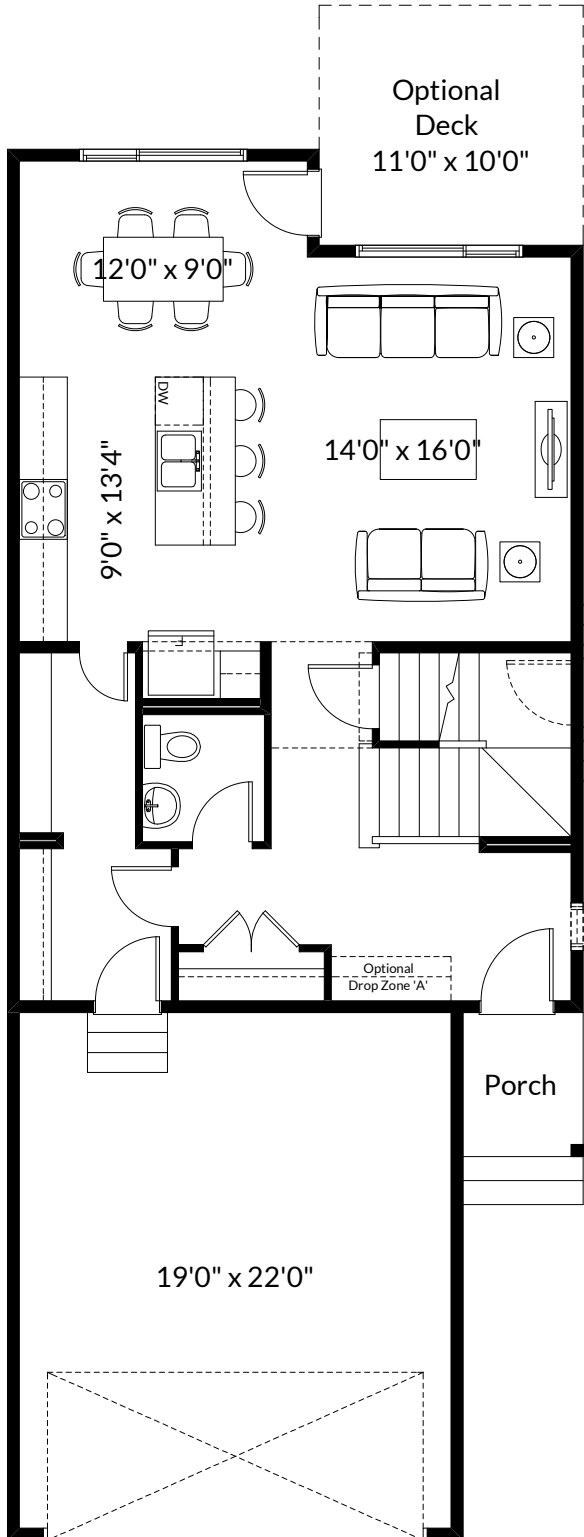
1,859+ SQ FT | 3 BED | 2.5 BATH



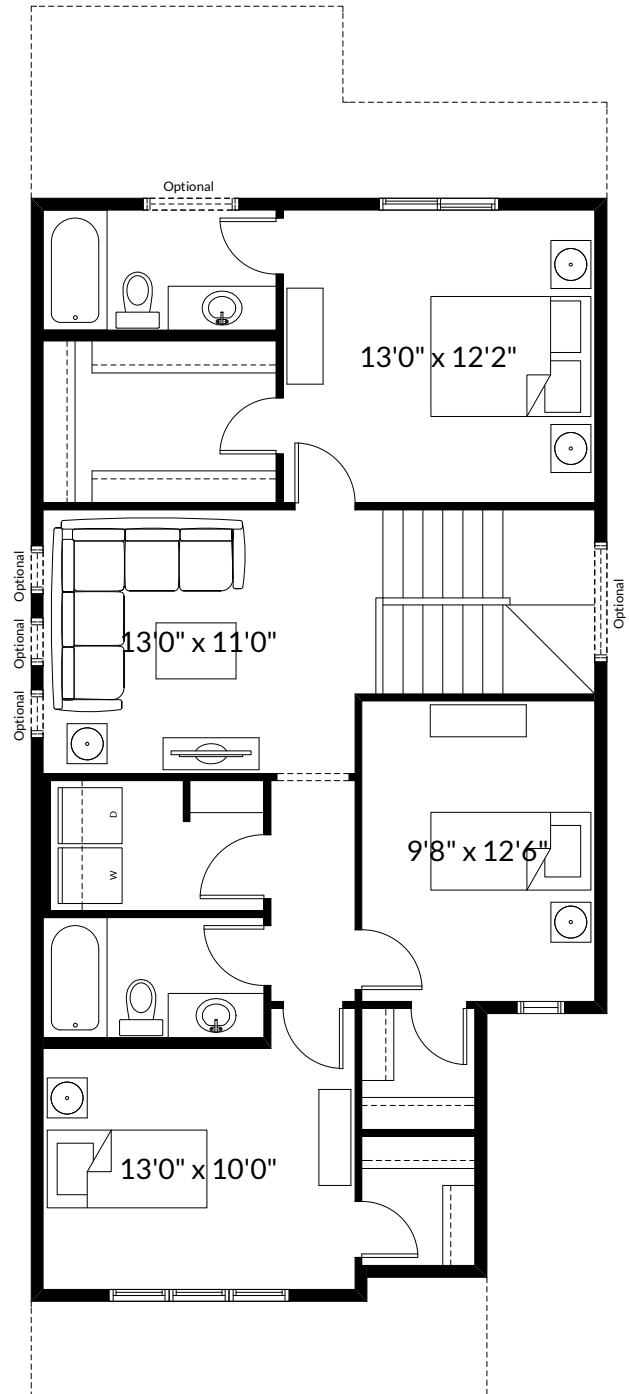
BETTER VALUE BY DESIGN
SINCE 1978 | HOMESBYAVI.COM

Homes by **AVI**

BASE FLOOR PLAN

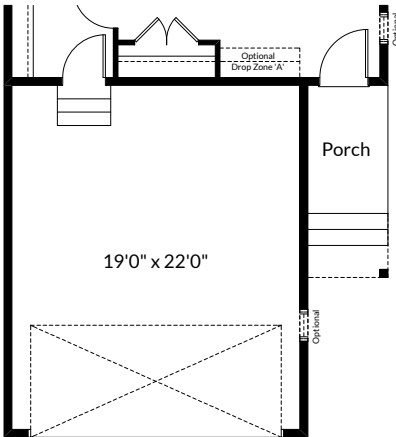


MAIN
820 SQ FT

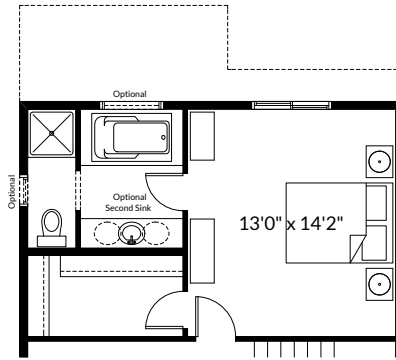


UPPER
1,039 SQ FT

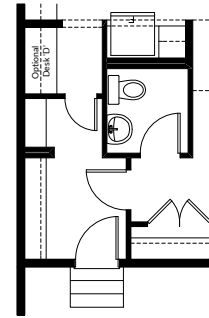
FLOOR PLAN OPTIONS



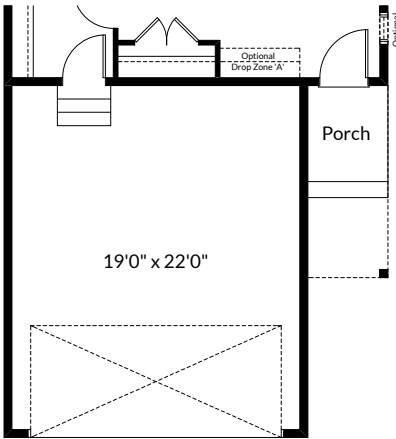
Partial Main Floor Plan for
Luka - Sunset Ridge Elevations
(Adds 0 Sq. Ft. to Main Floor)



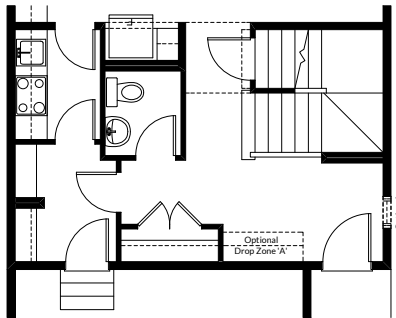
Partial Second Floor Plan with
Optional Upgraded Ensuite
(Adds 48 Sq. Ft. to Second Floor)



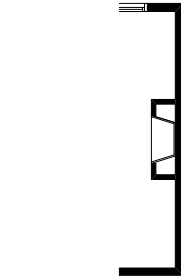
Partial Main Floor Plan with
Optional Kitchen Desk
(Adds 0 Sq. Ft. to Main Floor)



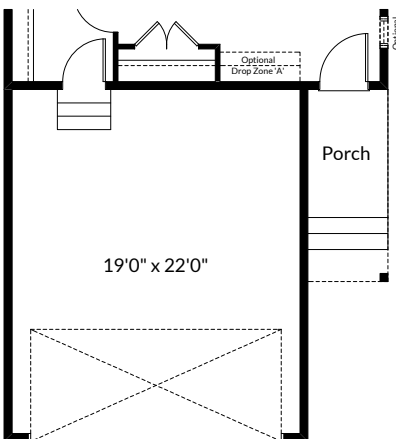
Partial Main Floor Plan for
Luka - Livingston Elevations
(Adds 0 Sq. Ft. to Main Floor)



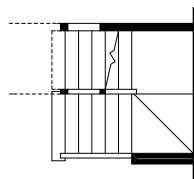
Partial Main Floor Plan with
Optional Spice Kitchen
(Adds 0 Sq. Ft. to Main Floor)



Partial Main Floor Plan with
Optional Interior Fireplace
(Adds 0 Sq. Ft. to Main Floor)



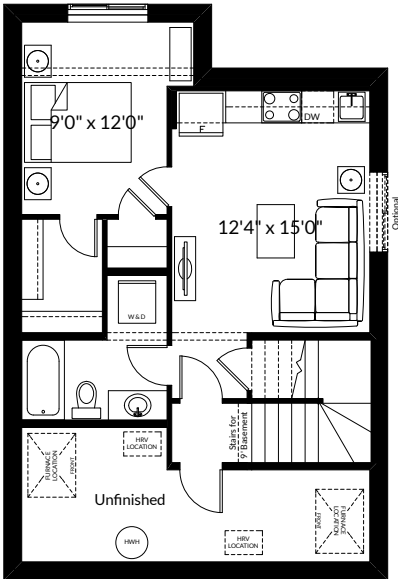
Partial Main Floor Plan for
Luka - Kings Heights Elevations
(Adds 0 Sq. Ft. to Main Floor)



Partial Main Floor Plan with
Optional Finished Stair to
Basement with Wall Openings
(Adds 0 Sq. Ft. to Main Floor)

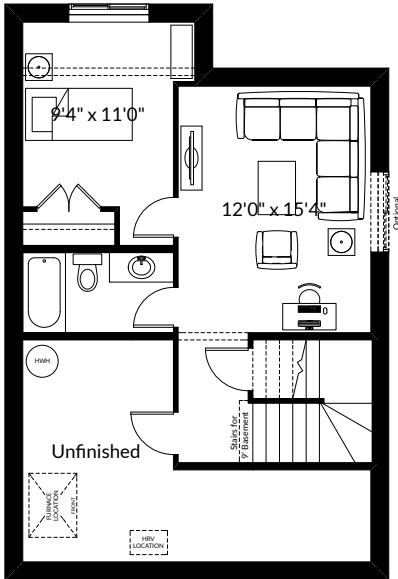
ADDITIONAL
OPTIONS

FLOOR PLAN OPTIONS



Optional Basement Suite Layout
512 Sq. Ft. (Finished Area)
(Must Add Optional Side Entry)

BASEMENT SUITE MAY NOT CONFORM
TO ALL MUNICIPALITIES.
LAND USE BY-LAW & CODE MUST BE
REVIEWED PRIOR TO ACCEPTANCE



Optional Basement Room Layout
457 Sq. Ft. (Finished Area)