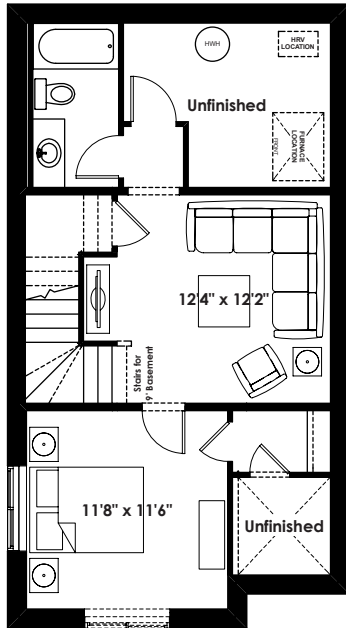


FLOOR PLAN OPTIONS

20'

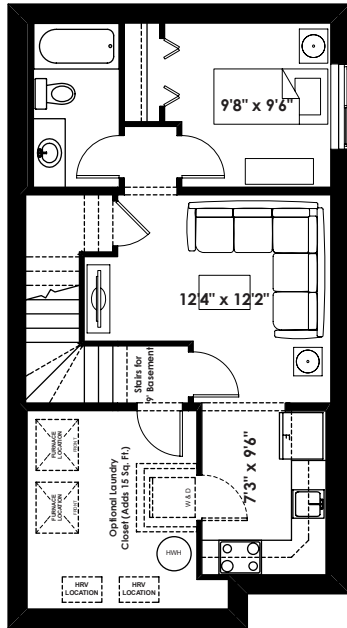
THE ALEXANDER

1,468+ SQ FT | 3 BED | 2.5 BATH



ALEXANDER

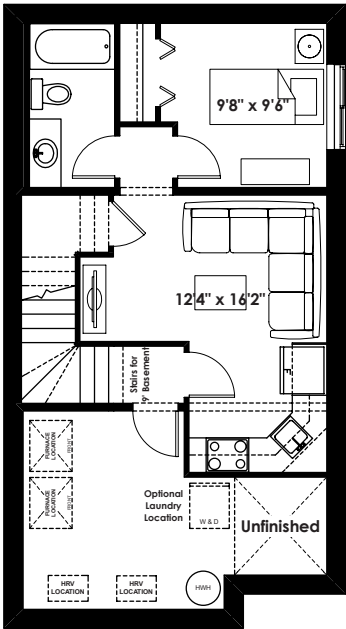
Optional Basement Room Layout
With Dropped Entry (Southfork Only)
439 Sq. Ft. (Finished)



ALEXANDER

Optional Basement Suite Layout
456 Sq. Ft. (Finished Area;
Must Add Optional Side Entry)

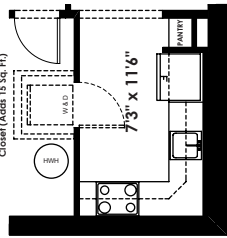
BASEMENT SUITE MAY NOT CONFORM
TO ALL MUNICIPALITIES.
LAND USE BY-LAW & CODE MUST BE
REVIEWED PRIOR TO ACCEPTANCE



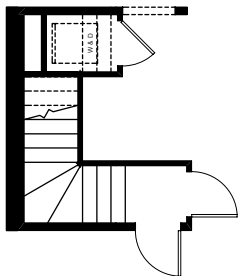
ALEXANDER

Optional Basement Suite Layout
With Dropped Entry (Southfork Only)
408 Sq. Ft. (Finished Area;
Must Add Optional Side Entry)

BASEMENT SUITE MAY NOT CONFORM
TO ALL MUNICIPALITIES.
LAND USE BY-LAW & CODE MUST BE
REVIEWED PRIOR TO ACCEPTANCE



Partial Basement Suite Layout
for Flat Front Elevation
(Adds 12 Sq. Ft.)



Optional Laundry
Closet Below Stairs
in Basement Suite
for use with
9' Basement Only
(Adds 15 Sq.Ft)



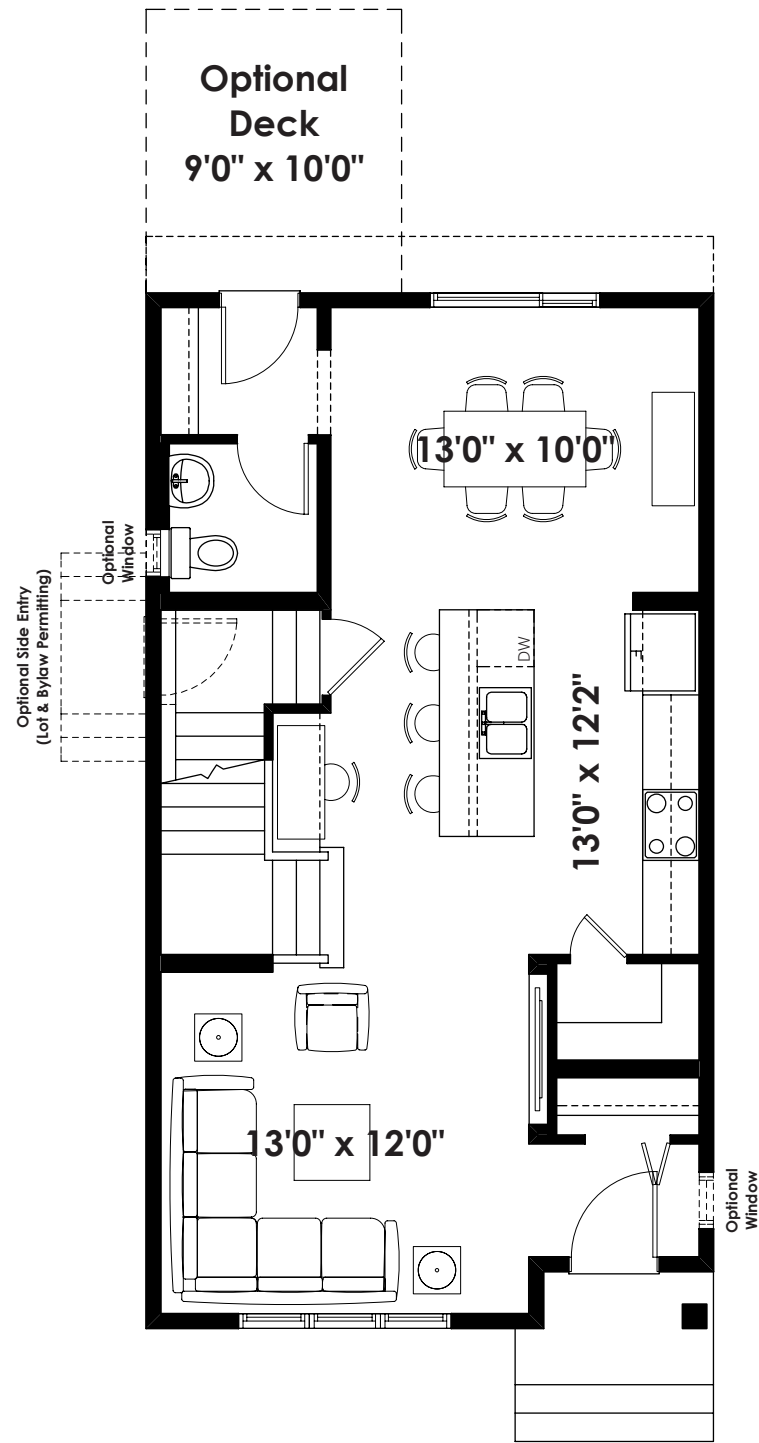
Prices are subject to change without notice. Actual floor plan, elevation, and square footage may not be exactly as shown. Square footage is measured to Alberta Building Code (ABC) regulations. Builder reserves the right to make changes without notice. E&OE.



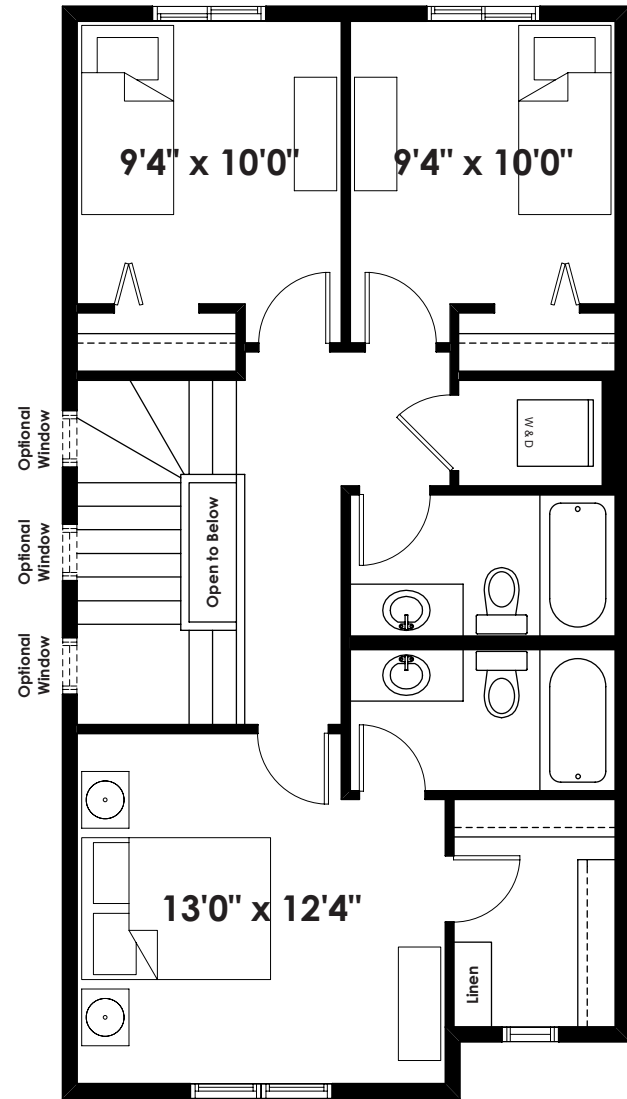
BETTER VALUE BY DESIGN
SINCE 1978 | HOMESBYAVI.COM



BASE FLOOR PLAN

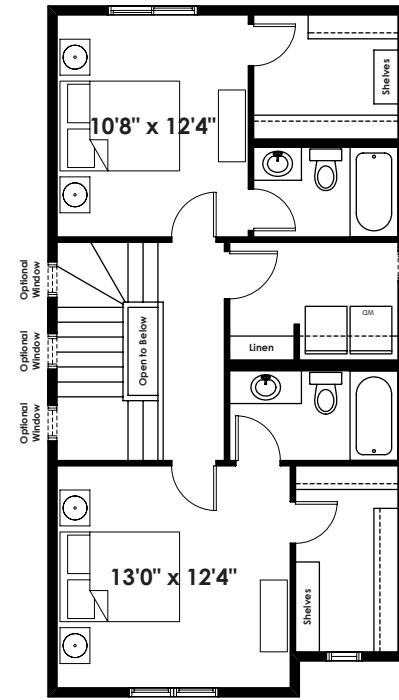


MAIN
718 SQ FT

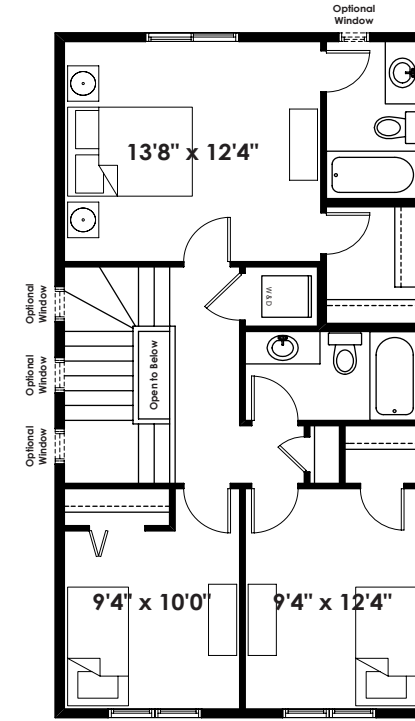


CLARKE
UPPER
750 SQ FT

FLOOR PLAN OPTIONS

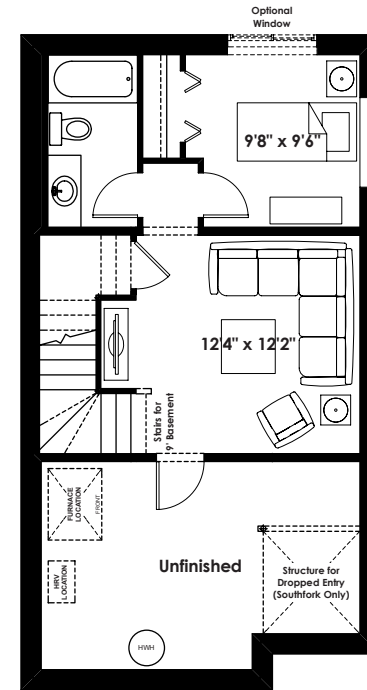


MUIR
Second Floor Plan
(Adds 0 Sq. Ft. to Second Floor)

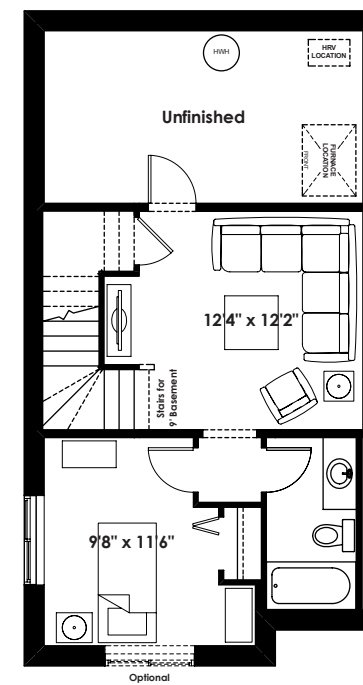


HENSON
Second Floor Plan
(Adds 12 Sq. Ft. to Second Floor)

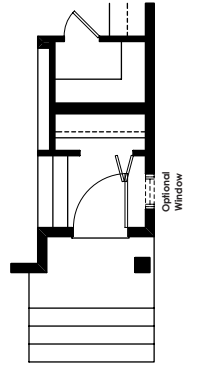
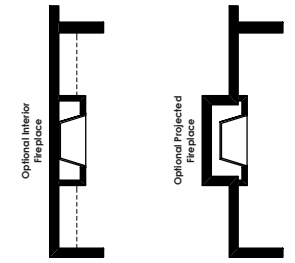
NOTE: THIS OPTIONAL SECOND FLOOR ONLY AVAILABLE WITH SELECT FLAT FRONT ELEVATIONS



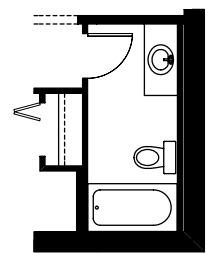
ALEXANDER
Alternate
Optional Basement Room Layout
374 Sq. Ft. (Finished)



ALEXANDER
Optional Basement Room Layout
399 Sq. Ft. (Finished)



Dropped Entry
(Southfork Only)
(Adds 0 Sq. Ft. to Main Floor)



Partial Basement Room Layout
for Flat Front Elevation
(Adds 12 Sq. Ft.)

ADDITIONAL
OPTIONS