

20'

THE TRISTAN

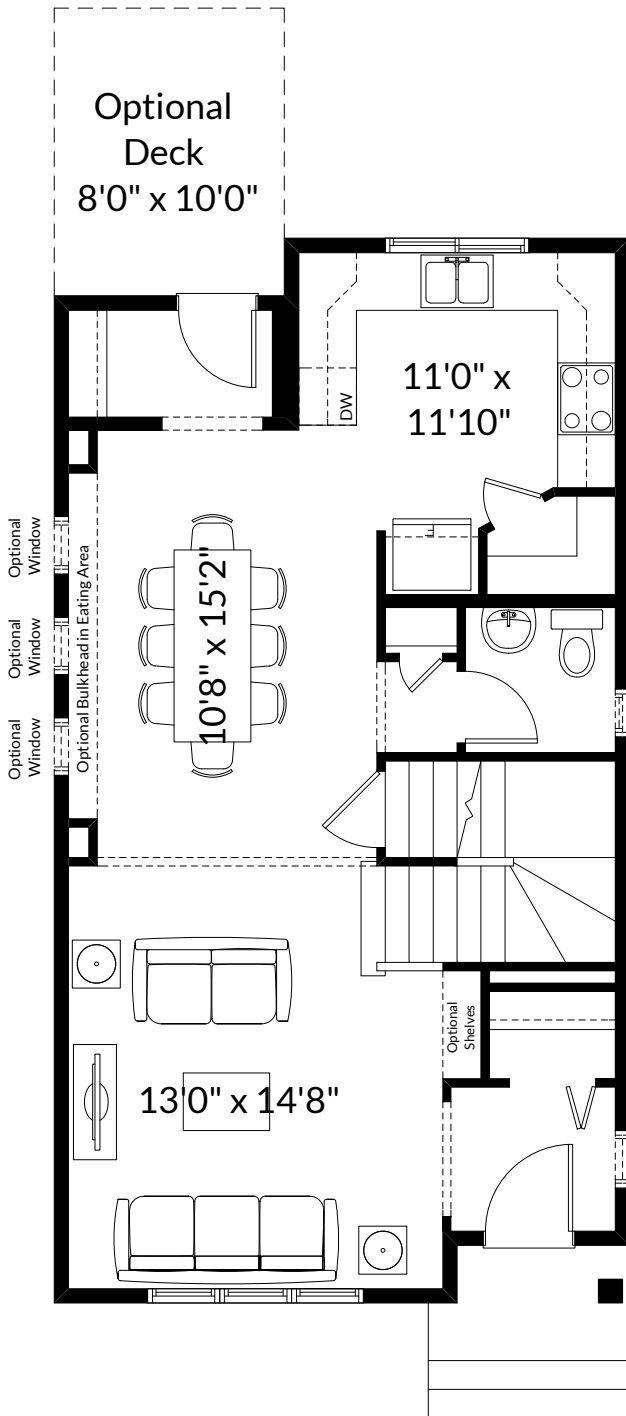
1,424+ SQ FT | 3 BED | 2.5 BATH



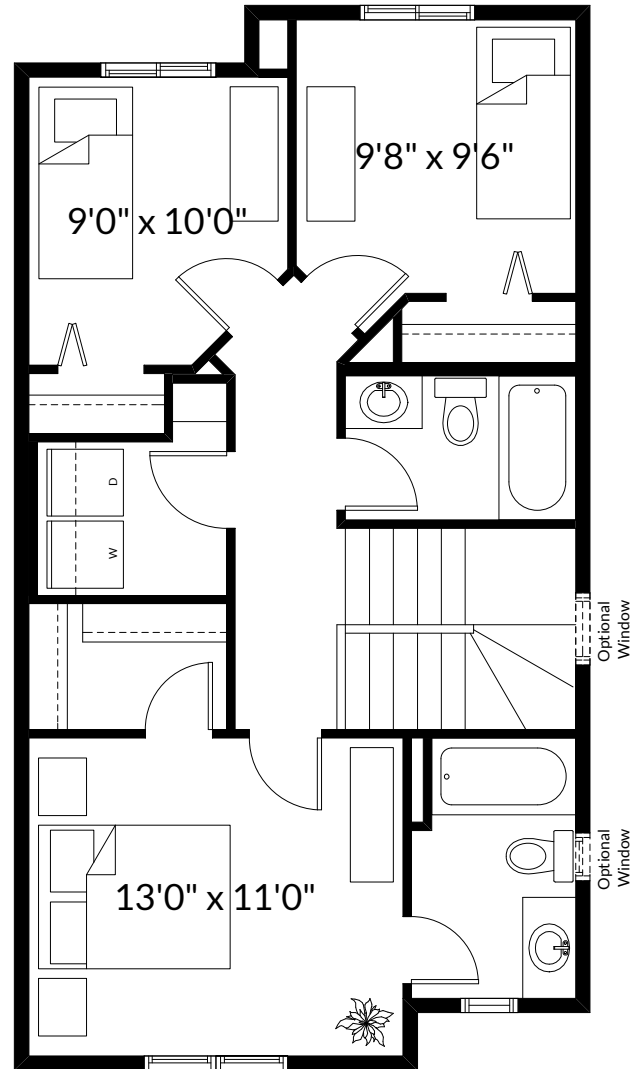
BETTER VALUE BY DESIGN
SINCE 1978 | HOMESBYAVI.COM

Homes by **AVI**

BASE FLOOR PLAN

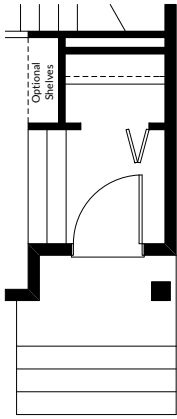


MAIN
712 SQ FT

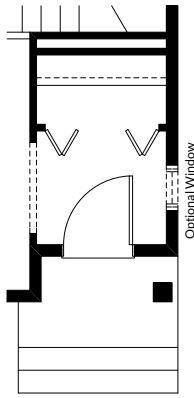


UPPER
712 SQ FT

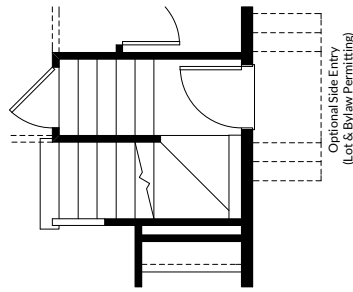
FLOOR PLAN OPTIONS



Dropped Entry
(Southfork Only)
(Adds 0 Sq. Ft.
to Main Floor)



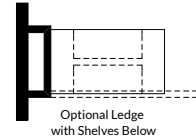
Optional Extended
Front Entry Closet
(Adds 0 Sq. Ft.
to Main Floor)



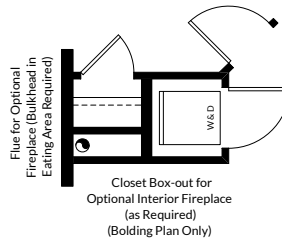
Partial Main Floor Plan
with Optional Side Entry
(Adds 0 Sq. Ft. to
Main Floor)



Corner Box-out for
Optional Interior Fireplace
(as Required)

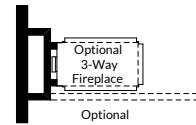


Optional Ledge
with Shelves Below

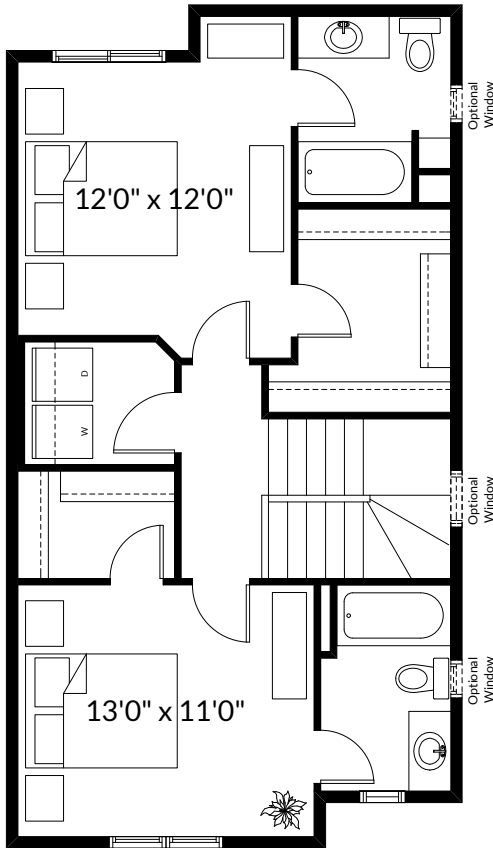


Flue for Optional
Fireplace (Bulkhead in
Eating Area Required)

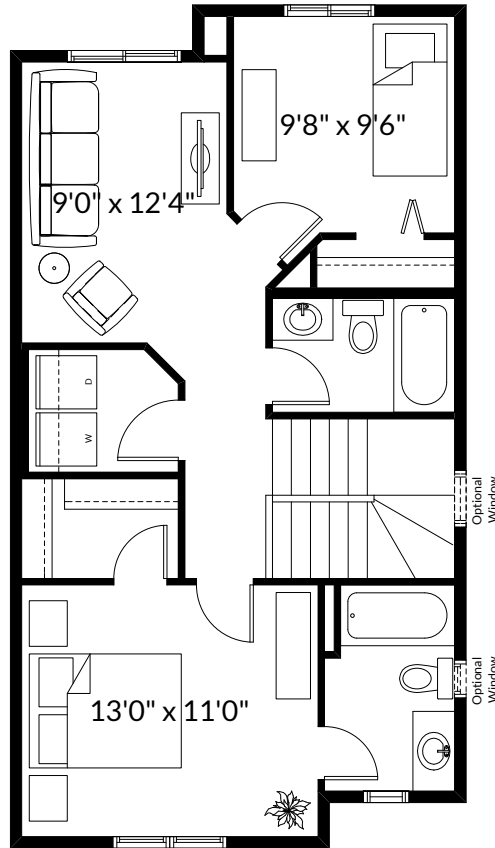
Closet Box-out for
Optional Interior Fireplace
(as Required)
(Bolding Plan Only)



Optional
3-Way Fireplace



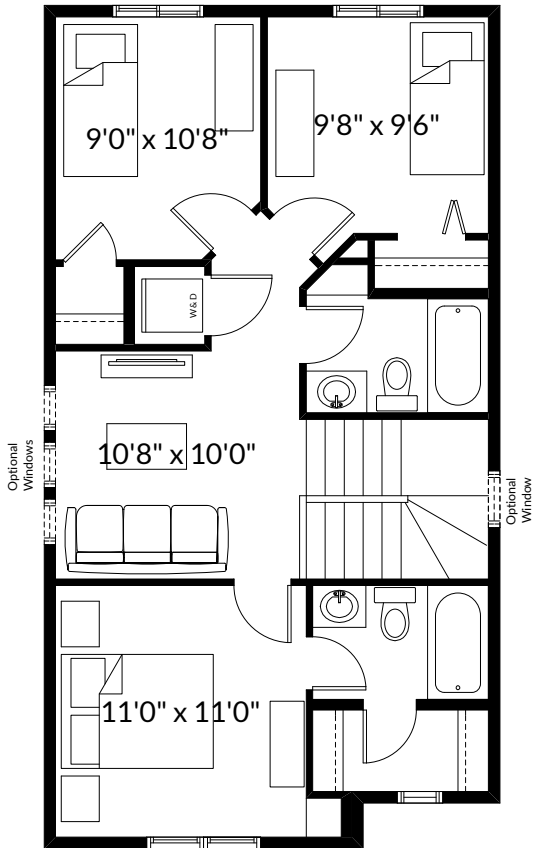
McDOUGAL
Second Floor Plan
(Adds 0 Sq. Ft. to Second Floor)



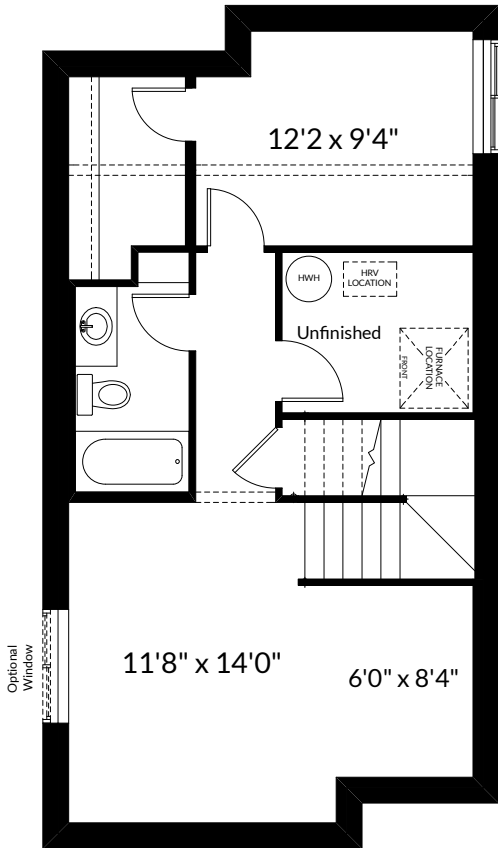
HOLLAND
Second Floor Plan
(Adds 0 Sq. Ft. to Second Floor)

ADDITIONAL
OPTIONS

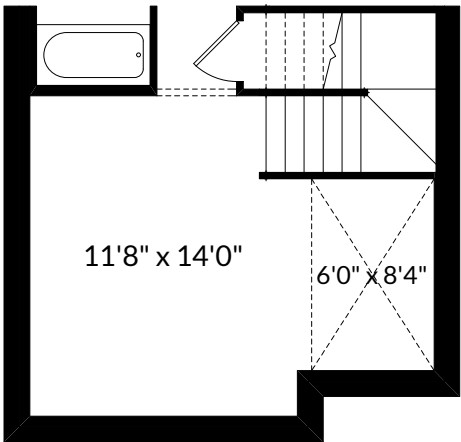
FLOOR PLAN OPTIONS



BOLDING
 Second Floor Plan
 (Adds 16 Sq. Ft. to Second Floor)



TRISTAN
 Future Basement Room Layout
 515 Sq. Ft. (Finished)



TRISTAN
 Future Basement Room Layout
 (Southfork Only)
 515 Sq. Ft. (Finished)

Prices are subject to change without notice. Actual floor plan, elevation, and square footage may not be exactly as shown. Square footage is measured to Alberta Building Code (ABC) regulations. Builder reserves the right to make changes without notice. E&OE.