

QUICK  
POSSESSION

# THE MASON

2,024 SQ FT | 4 BED | 3 BATH

1767 PLUM CRESCENT SW



## THIS FRONT DRIVE HOME FEATURES

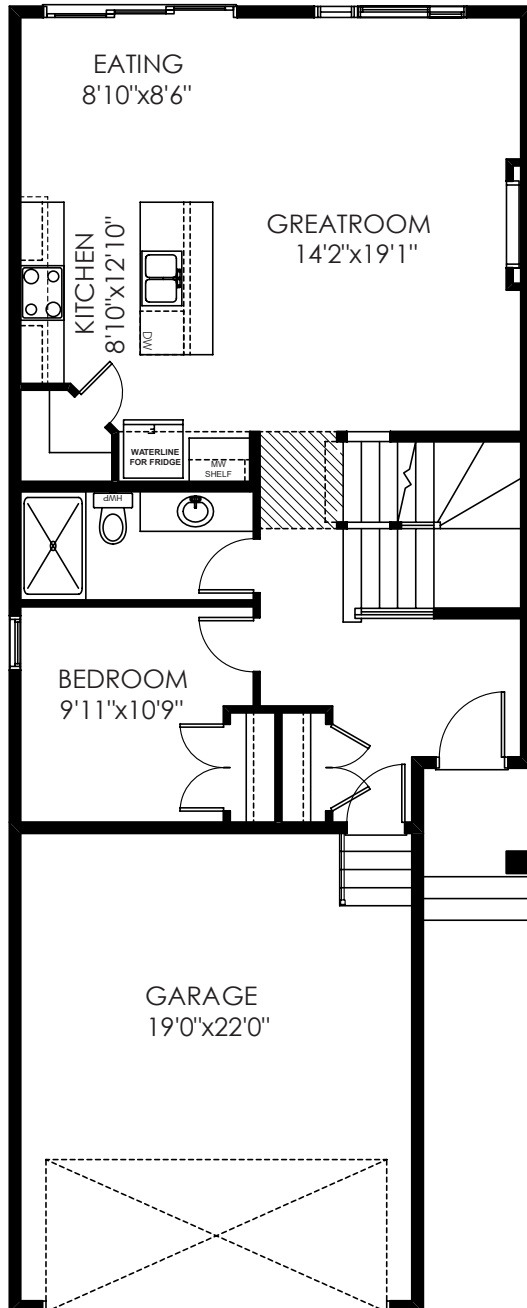
- Landscaping and rear deck included
- Walkout basement with 9' ceiling
- Main floor bedroom with 3 piece bathroom
- California knockdown ceiling
- Electric fireplace
- Soft close drawers & quartz countertops all throughout house
- Chimney hoodfan & microwave oven included



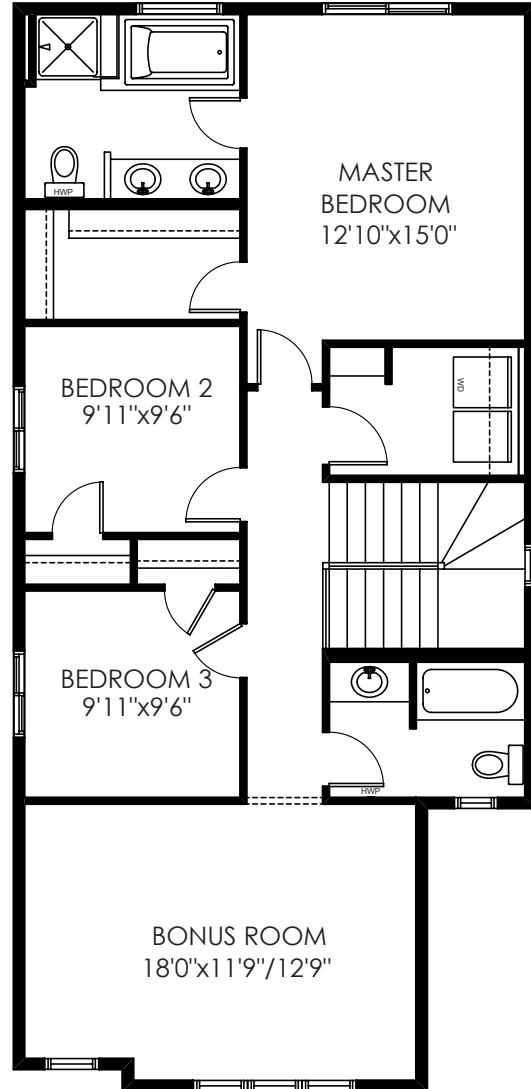
BETTER VALUE BY DESIGN  
SINCE 1978 | HOMESBYAVI.COM

Homes by **AVI**

# FLOOR PLAN



**MAIN**  
897 SQ FT



**UPPER**  
1,127 SQ FT

For more information or to book an appointment please contact us at **587.525.5184**

Prices are subject to change without notice. Actual floor plan, elevation, and square footage may not be exactly as shown. Square footage is measured to Alberta Building Code (ABC) regulations. Builder reserves the right to make changes without notice. E&OE.

Homes by **AVI**