

18'

# THE FINN

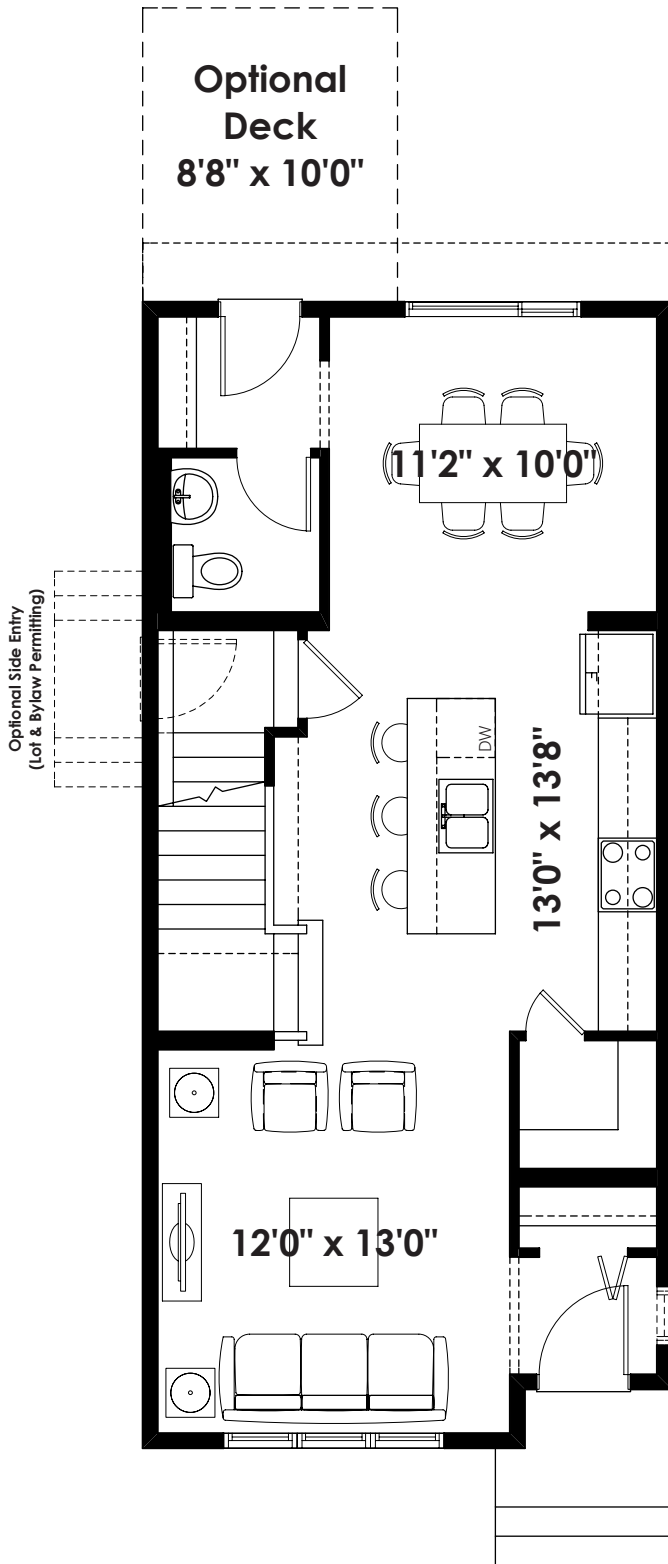
1,415+ SQ FT | 3 BED | 2.5 BATH



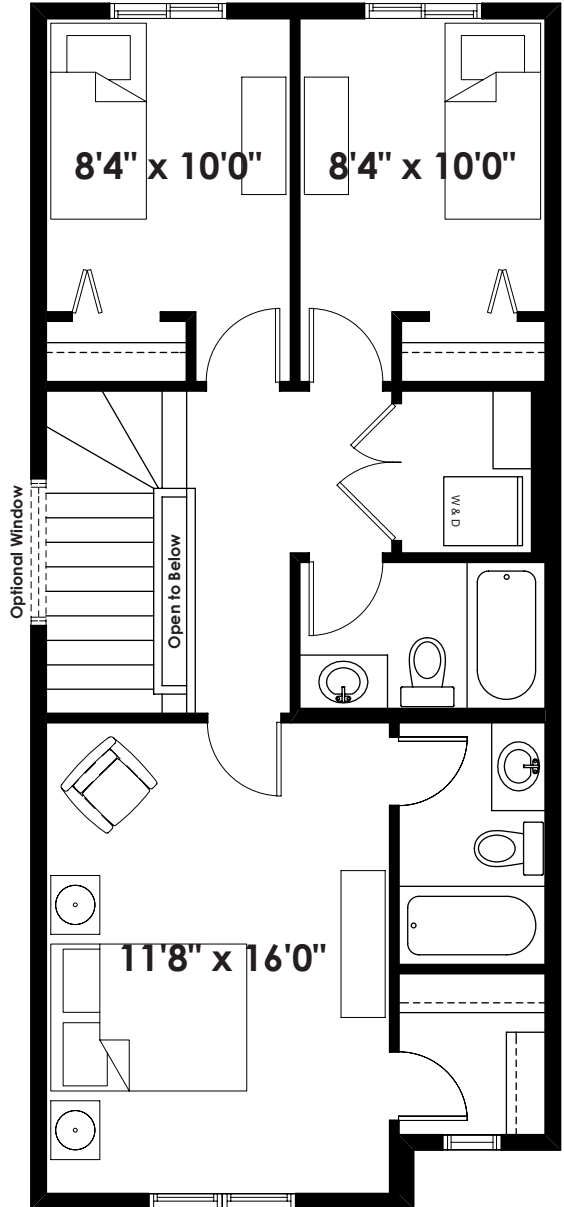
BETTER VALUE BY DESIGN  
SINCE 1978 | HOMESBYAVI.COM

Homes by **AVI**

# BASE FLOOR PLAN

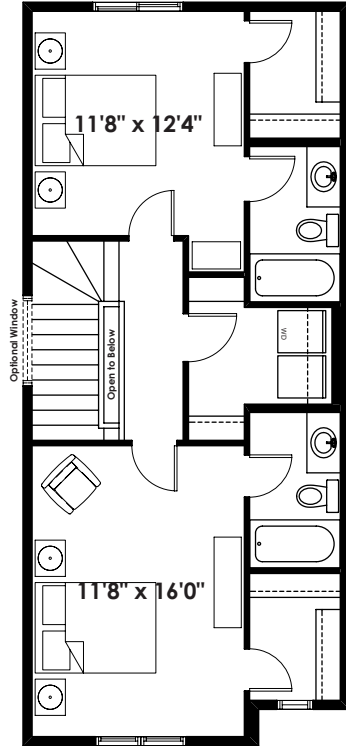


**MAIN**  
692 SQ FT

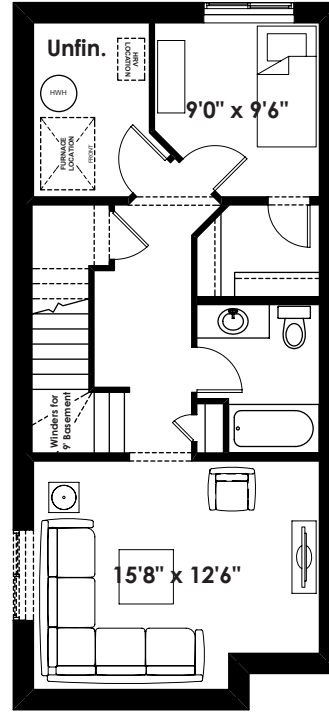


**UPPER**  
723 SQ FT

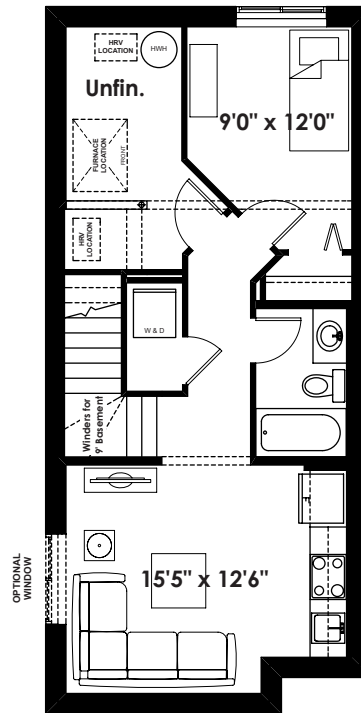
# FLOOR PLAN OPTIONS



**LEVI**  
**Second Floor Plan**  
**723 Sq. Ft.**  
**Double Master Suite Upper Floor**

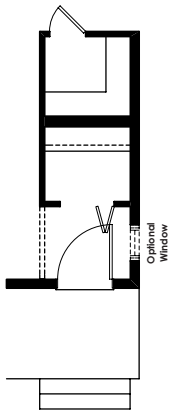


**FINN**  
**Optional Basement Room Layout**  
**488 Sq. Ft. (Finished)**

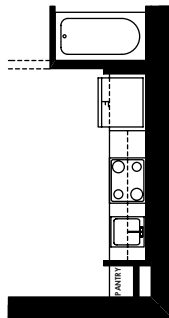


**FINN**  
**Optional Basement Suite Layout**  
**474 Sq. Ft. (Finished;**  
**Must Add Optional Side Entry)**

BASEMENT SUITE MAY NOT CONFORM  
 TO ALL MUNICIPALITIES.  
 LAND USE BY-LAW & CODE MUST BE  
 REVIEWED PRIOR TO ACCEPTANCE



**Partial Main Floor**  
**for Flat Front Elevation**  
**(Adds 10 Sq. Ft.**  
**to Main Floor)**



**Partial Basement Suite**  
**Layout for**  
**Flat Front Elevation**  
**(Adds 10 Sq. Ft.)**