

QUICK
POSSESSION

THE JADE

1,386 SQ FT | 3 BED | 2.5 BATH

2079 MAPLE ROAD



THIS DUPLEX HOME FEATURES

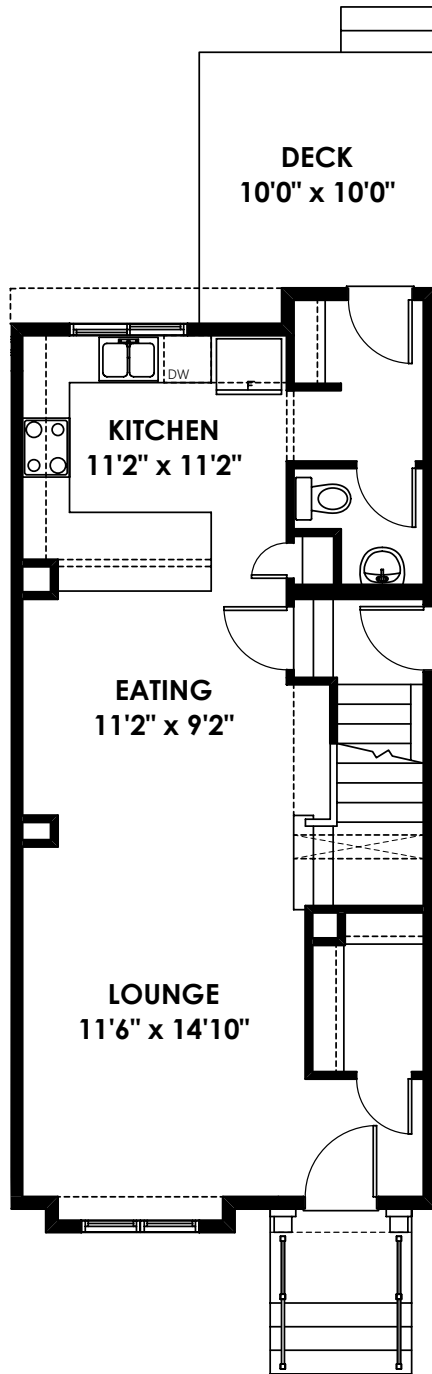
- Quartz countertops throughout
- Stainless steel kitchen appliance package
- 9' main floor & basement ceilings
- Full landscaping with rear deck and BBQ gas line
- Separate side entrance to basement
- Double detached garage
- Waterproof laminate flooring throughout main floor



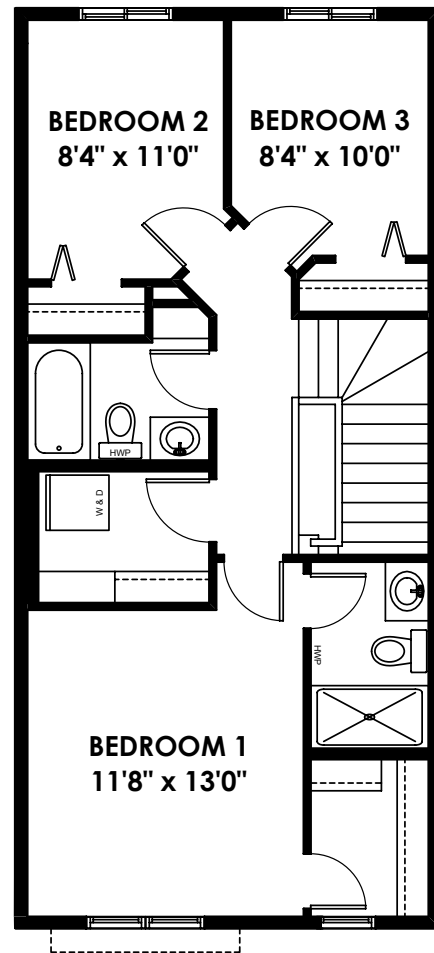
BETTER VALUE BY DESIGN
SINCE 1978 | HOMESBYAVI.COM

Homes by **AVI**

FLOOR PLAN



MAIN
693 SQ FT



UPPER
693 SQ FT

For more information or to book an appointment please contact us at **587.525.5236**

Prices are subject to change without notice. Actual floor plan, elevation, and square footage may not be exactly as shown. Square footage is measured to Alberta Building Code (ABC) regulations. Builder reserves the right to make changes without notice. E&OE.

Homes by **AVI**