

QUICK  
POSSESSION

# THE FINN

1,435 SQ FT | 3 BED | 2.5 BATH

2081 MAPLE ROAD



## THIS DUPLEX HOME FEATURES

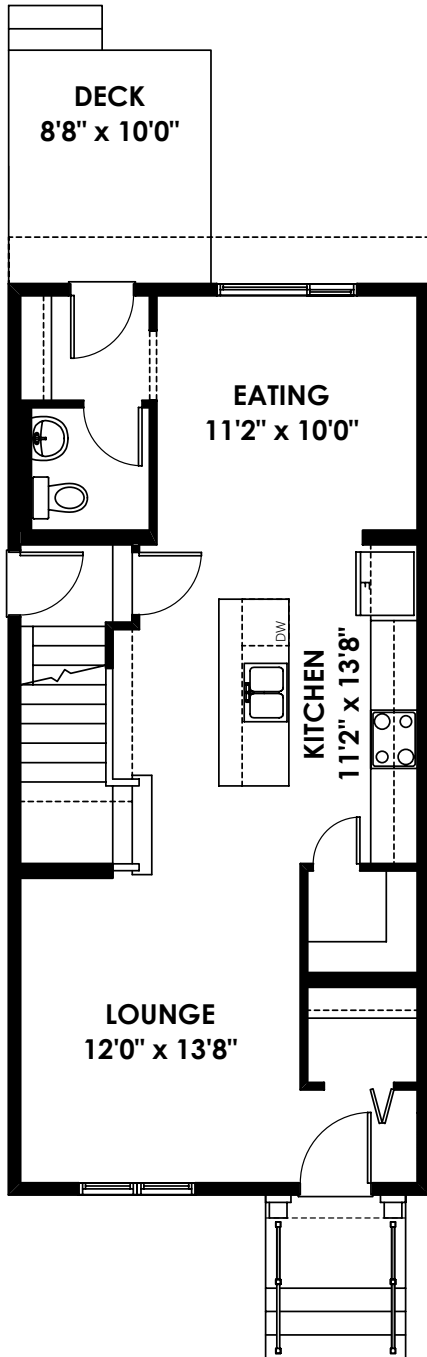
- Quartz countertops throughout
- Stainless steel kitchen appliance package
- 9' main floor & basement ceilings
- Full landscaping with rear deck and BBQ gas line
- Separate side entrance to basement
- Double detached garage
- Waterproof laminate flooring throughout main floor



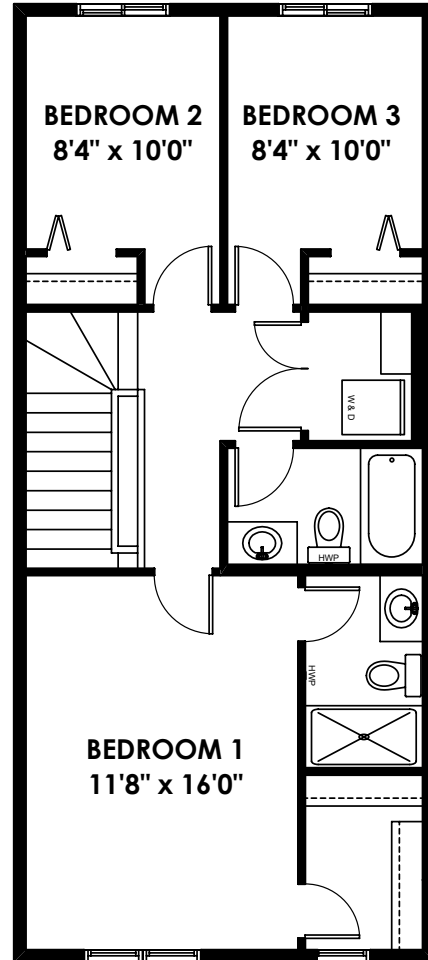
BETTER VALUE BY DESIGN  
SINCE 1978 | HOMESBYAVI.COM

Homes by **AVI**

# FLOOR PLAN



**MAIN**  
702 SQ FT



**UPPER**  
733 SQ FT

For more information or to book an appointment please contact us at **587.525.5236**

Prices are subject to change without notice. Actual floor plan, elevation, and square footage may not be exactly as shown. Square footage is measured to Alberta Building Code (ABC) regulations. Builder reserves the right to make changes without notice. E&OE.

Homes by **AVI**