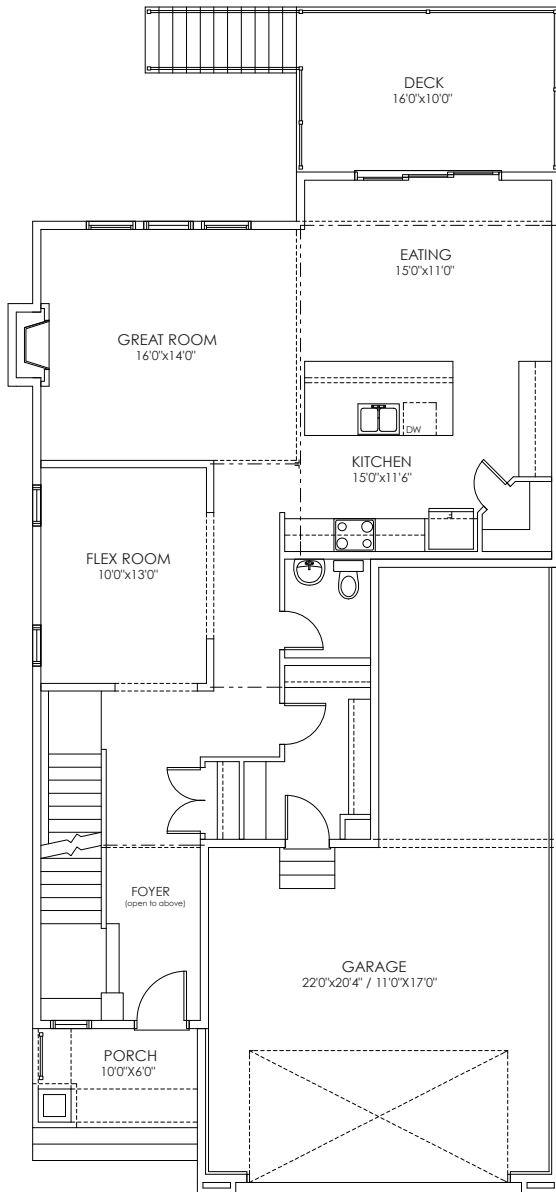


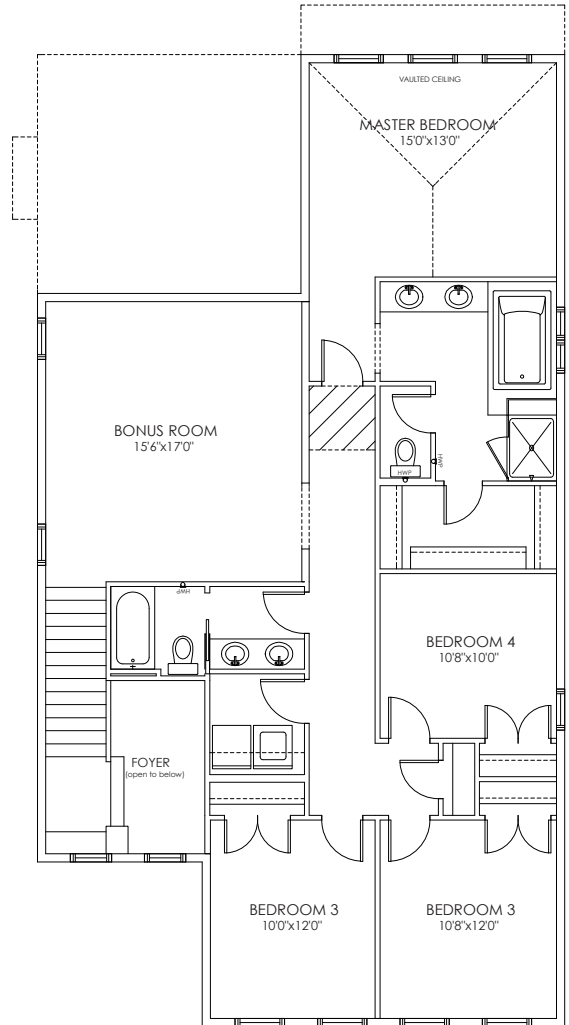
AVAILABLE HOME

# the Gleniffer

2686 sq ft  
120 Masters Way SE



**MAIN**  
1194 sq ft



**UPPER**  
1492 sq ft



# Model Specifications

---

## 120 Masters Way SE

### THIS FABULOUS HOME FEATURES:

- 4 Bedrooms
- 3 Car tandem garage
- Stainless steel appliance package with fluted hood fan
- Gas fireplace with stone
- Sunshine basement with large windows
- 16' x 10' Vinyl deck
- 9' Basement, 9' main floor, 9' upper floor
- Vaulted master ceiling
- 5 Piece ensuite which includes a tiled shower and bench
- Phase 34 estate access to the central beach

---

For more information please contact  
the show home at 403.536.7262

Prices subject to change. Actual floor plan, elevation and square  
footage may not be exactly as shown. Builder reserves right to make  
changes without notice. Rendering is artist concept only. E&OE.

[homesbyavi.com](http://homesbyavi.com)

