

QUICK  
POSSESSION

# THE ABERDEEN

2,268 SQ FT | 3 BED | 2.5 BATH

634 148TH AVE NW | POSSESSION SPRING 2021



## THIS REAR LANED HOME FEATURES

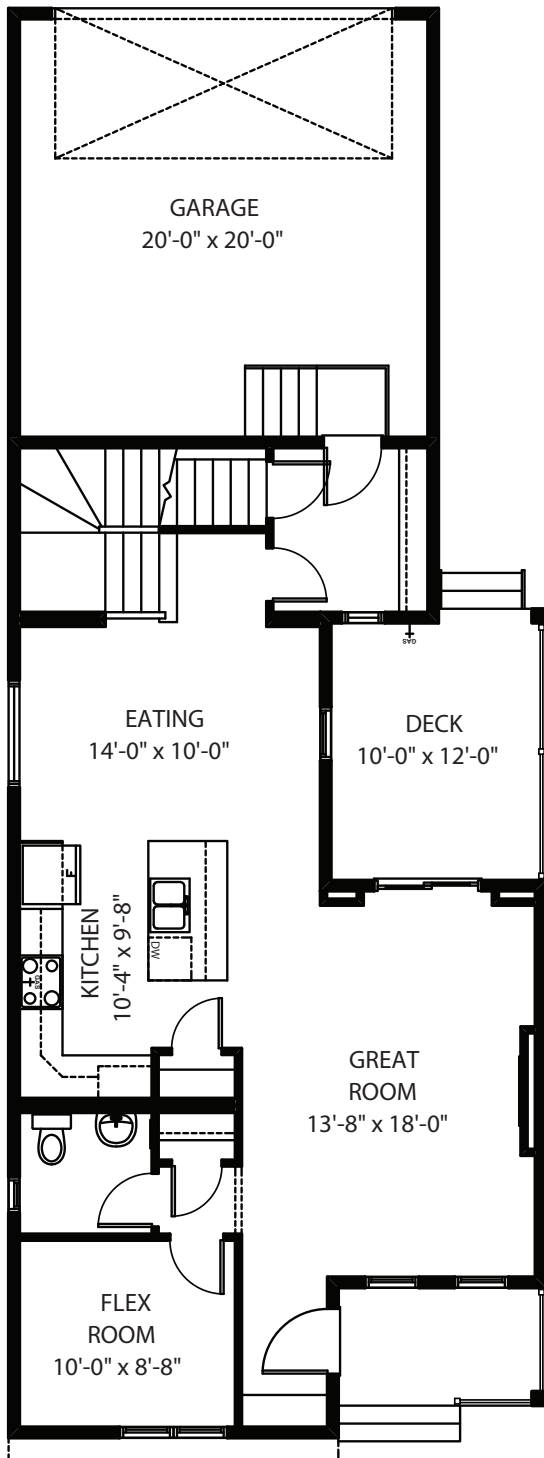
- Incredible new Aberdeen 2268 sq ft plan
- Rear attached garage with paved lane
- 25' Wide with huge main floor great room
- Ample main floor flex room
- Beautiful covered deck off great room
- Massive upper family room
- Gorgeous master ensuite with double sinks, 48" glass wall shower/tiled bench



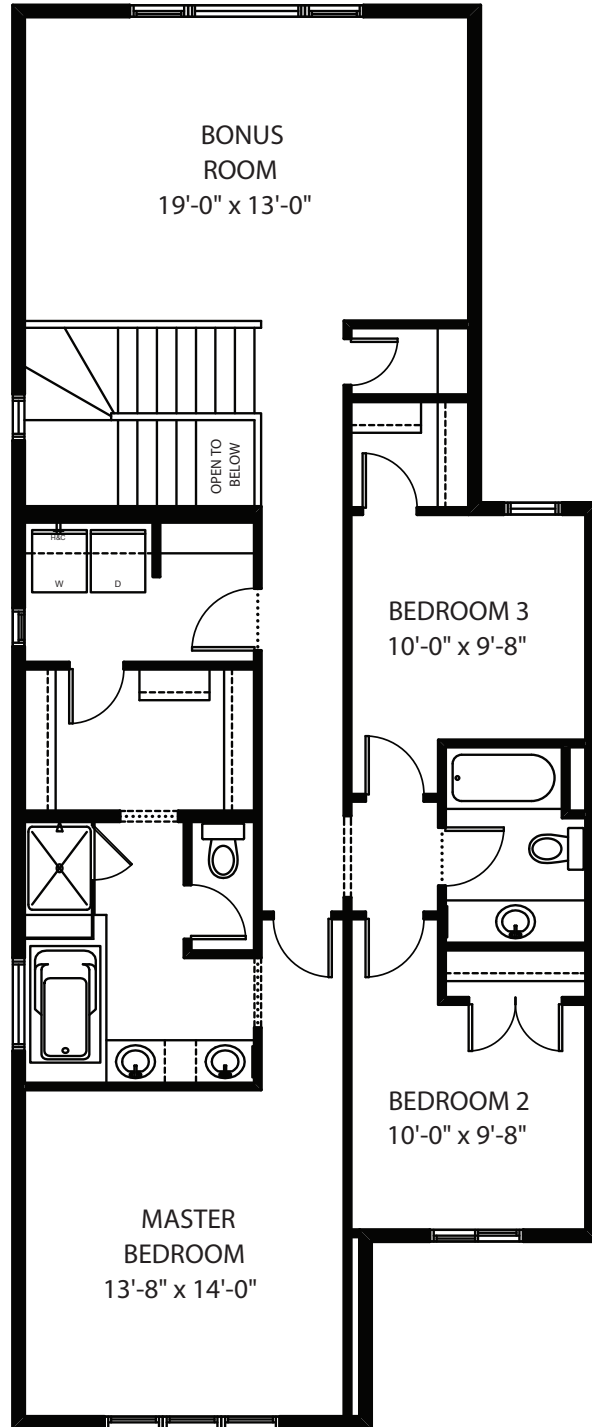
BETTER VALUE BY DESIGN  
SINCE 1978 | HOMESBYAVI.COM

Homes by **AVI**

# AS BUILT FLOOR PLAN



**MAIN**  
936 SQ FT



**UPPER**  
1,332 SQ FT

For more information or to book an appointment please contact us at **587.349.7844**

Prices are subject to change without notice. Actual floor plan, elevation, and square footage may not be exactly as shown. Square footage is measured to Alberta Building Code (ABC) regulations. Builder reserves the right to make changes without notice. E&OE.

Homes by **AVI**