

QUICK
POSSESSION

THE WENTWORTH COASTAL

2,711 SQ FT | 3 BED | 2.5 BATH

91 MAHOGANY COVE SE



* Currently under construction

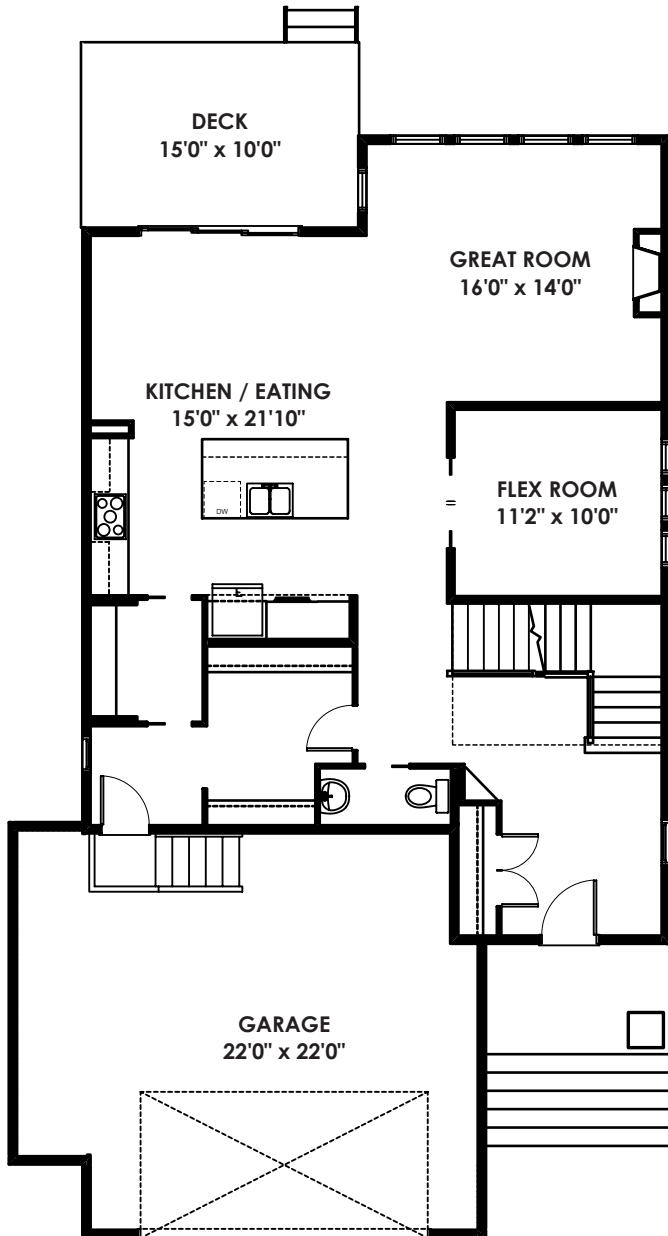
THIS FRONT DRIVE HOME FEATURES

- Sunny south backyard on level lot, hosts 15' x 10' deck
- 44 ft wide lot, allows our popular Wentworth model to have a 4 ft jogged extension to the garage, great for storage
- Welcoming spacious front foyer with an L-Shaped staircase, easy for navigation
- Great sized flex room, hidden pocket doors – open to kitchen/dining
- Convenient walk through pantry - off of rear entry
- Fully functioning kitchen includes a 5 burner gas cooktop, chimney style - stainless steel hood fan, built-in wall oven and microwave, tall tub "energy star" stainless steel dishwasher, and side-by-side refrigerator
- Quartz countertops to kitchen and island, ensuite and main bath
- Entire main floor with Luxury Vinyl Plank (LVP)
- Cozy fireplace in great room adjacent to kitchen and dining area
- 8 ft high passage doors, accentuate the 9 ft main floor ceilings
- Large master bedroom, ensuite and huge walk-in closet, positioned across the back
- 2 large bedrooms, family bathroom, convenient laundry room and large bonus room for family entertainment
- Stairs are developed to the basement with landing and door
- Undeveloped basement is upgraded to 9 ft foundation walls and is ready for you to put your own stamp on it

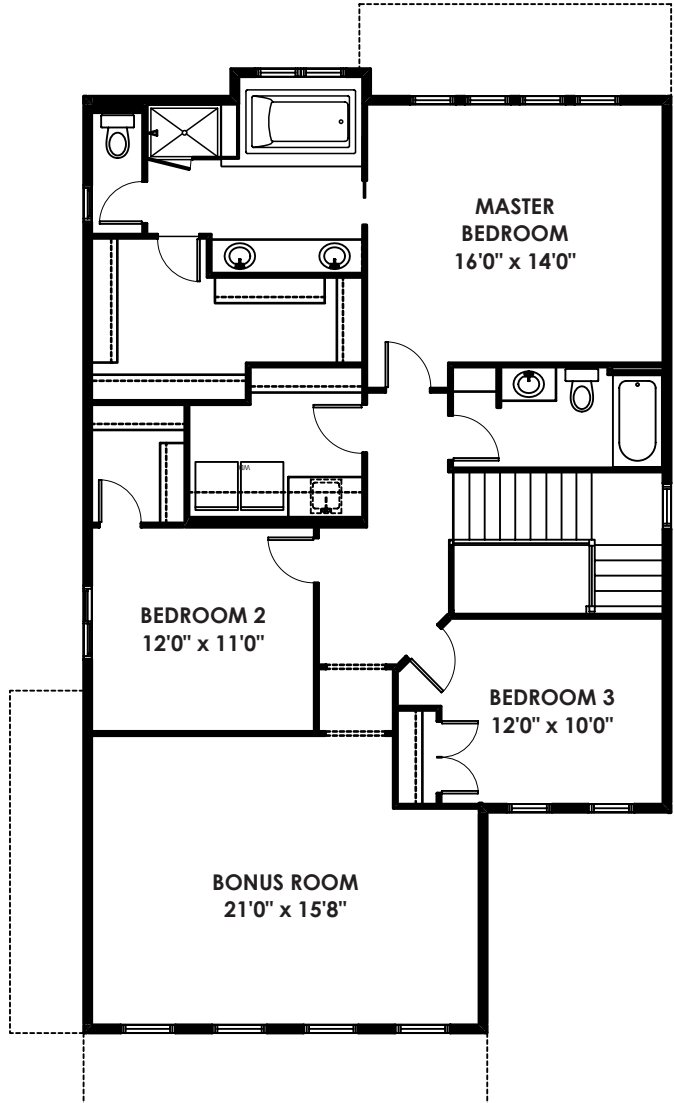
BETTER VALUE BY DESIGN
SINCE 1978 | HOMESBYAVI.COM

Homes by **AVI**

FLOOR PLAN



MAIN
1,213 SQ FT



UPPER
1,498 SQ FT

For more information or to book an appointment please contact us at **403.536.7262**

Prices are subject to change without notice. Actual floor plan, elevation, and square footage may not be exactly as shown. Square footage is measured to Alberta Building Code (ABC) regulations. Builder reserves the right to make changes without notice. E&OE.

Homes by **AVI**