

20'

# THE VICTORIA

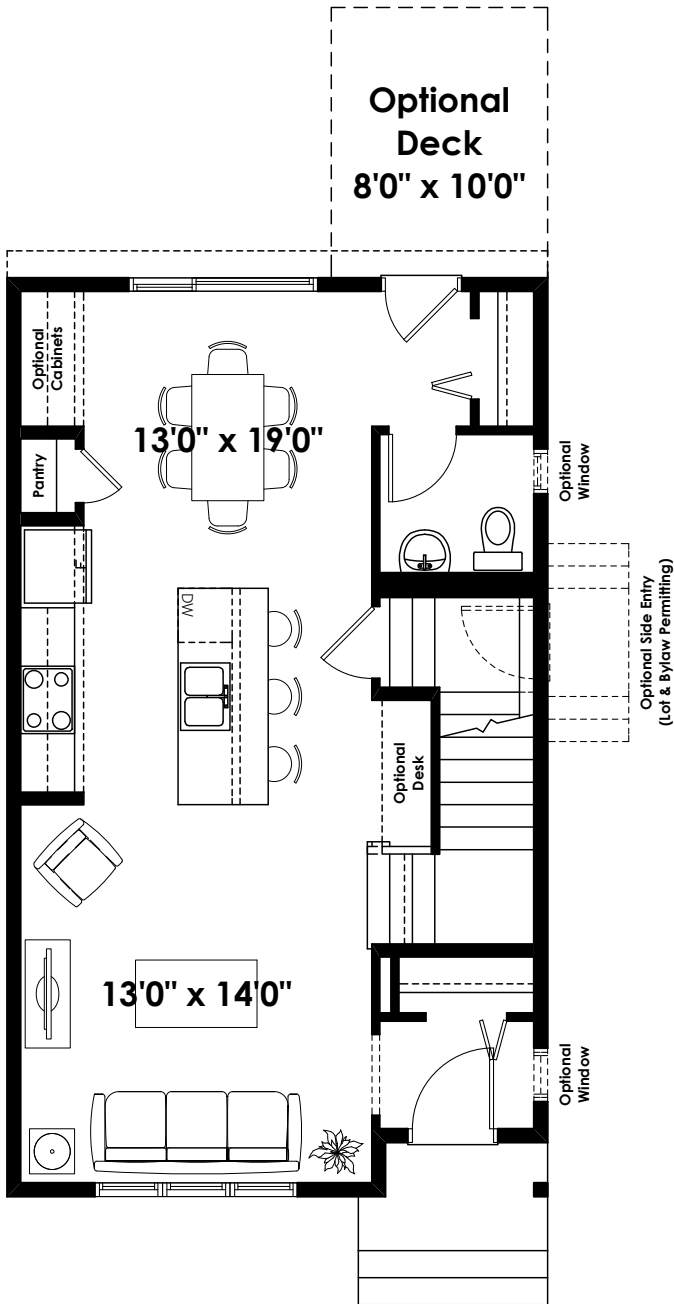
1,356+ SQ FT | 3 BED | 2.5 BATH



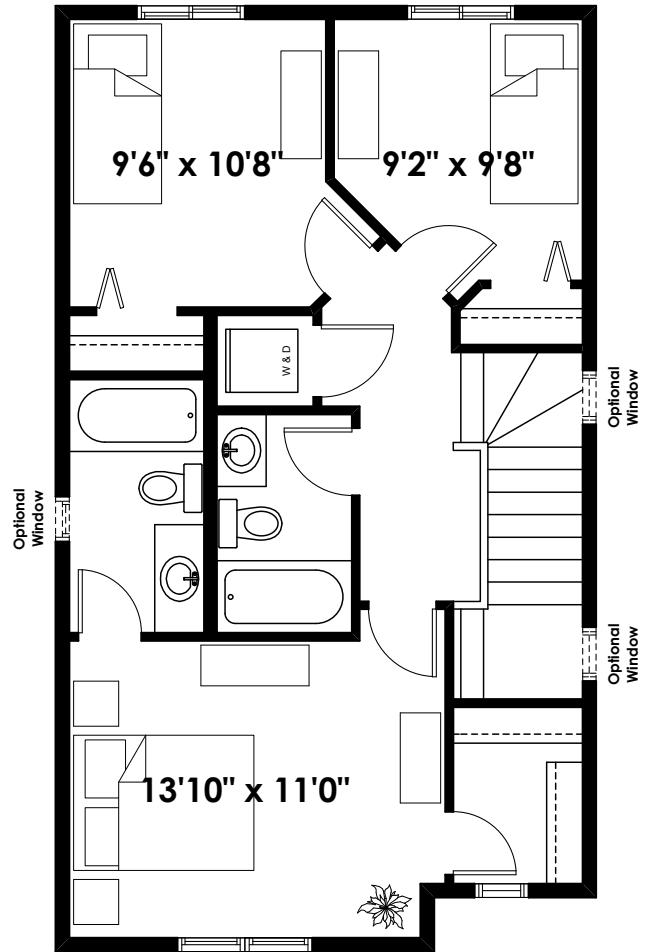
BETTER VALUE BY DESIGN  
SINCE 1978 | HOMESBYAVI.COM

Homes by **AVI**

# BASE FLOOR PLAN

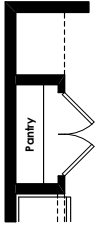


**MAIN**  
668 SQ FT

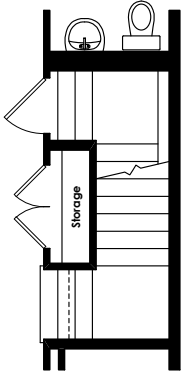


**UPPER**  
688 SQ FT

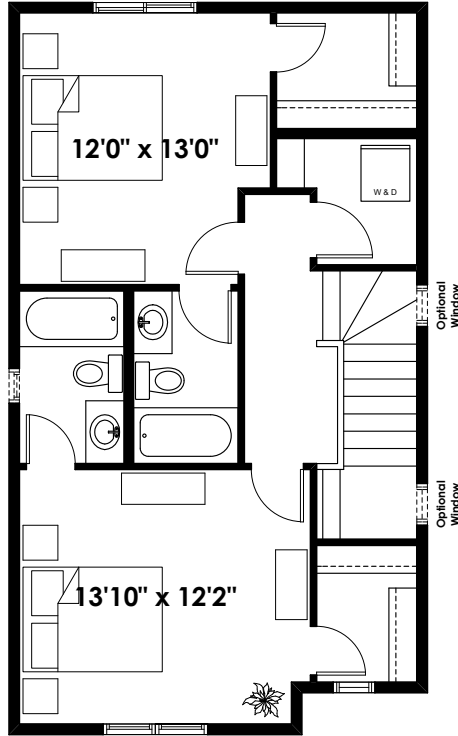
# FLOOR PLAN OPTIONS



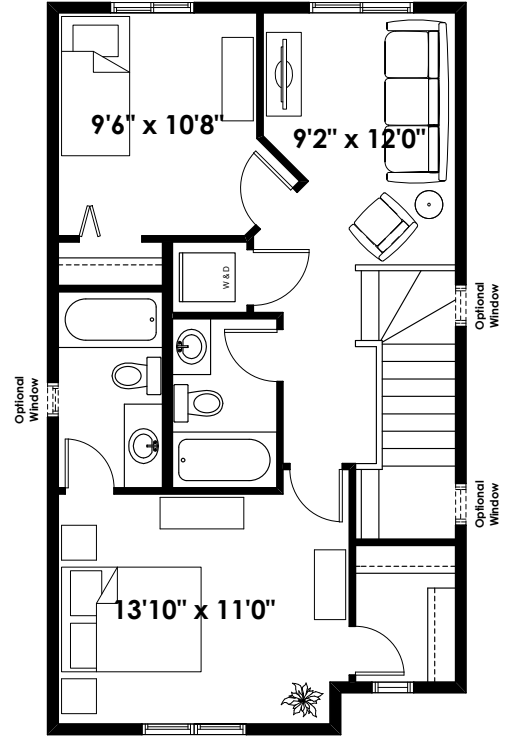
**Optional Extended Pantry**  
(Adds 0 Sq. Ft. to Main Floor)



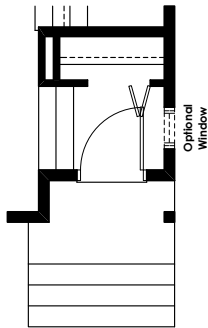
**Optional Storage Closet at Stairs**  
(Adds 0 Sq. Ft. to Main Floor)



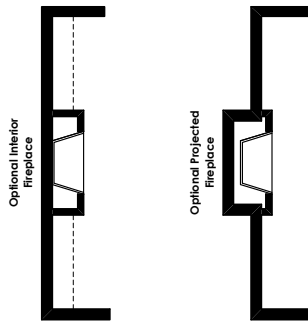
**Halliwell**  
Second Floor Plan  
688 Sq. Ft.



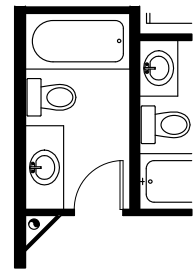
**Chisholm**  
Second Floor Plan  
688 Sq. Ft.



**Dropped Entry**  
(Southfork Only)  
(Adds 0 Sq. Ft. to Main Floor)



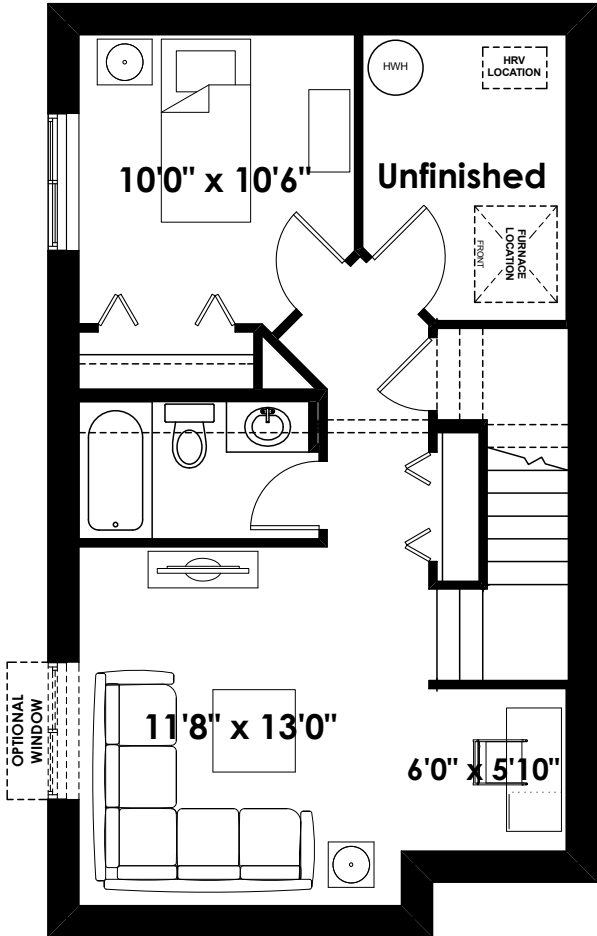
**Optional Fireplaces**  
(Adds 0 Sq. Ft. to Main Floor)



**Corner Box-out & Ensuite Door Location for Optional Interior Fireplace**  
(as Required)

ADDITIONAL  
OPTIONS

FLOOR PLAN OPTIONS



VICTORIA

**Future Basement Room Layout  
459 Sq. Ft. (Finished Area;  
(Not Included in Contract)**

Prices are subject to change without notice. Actual floor plan, elevation, and square footage may not be exactly as shown. Square footage is measured to Alberta Building Code (ABC) regulations. Builder reserves the right to make changes without notice. E&OE.