

20'

THE GREGORY

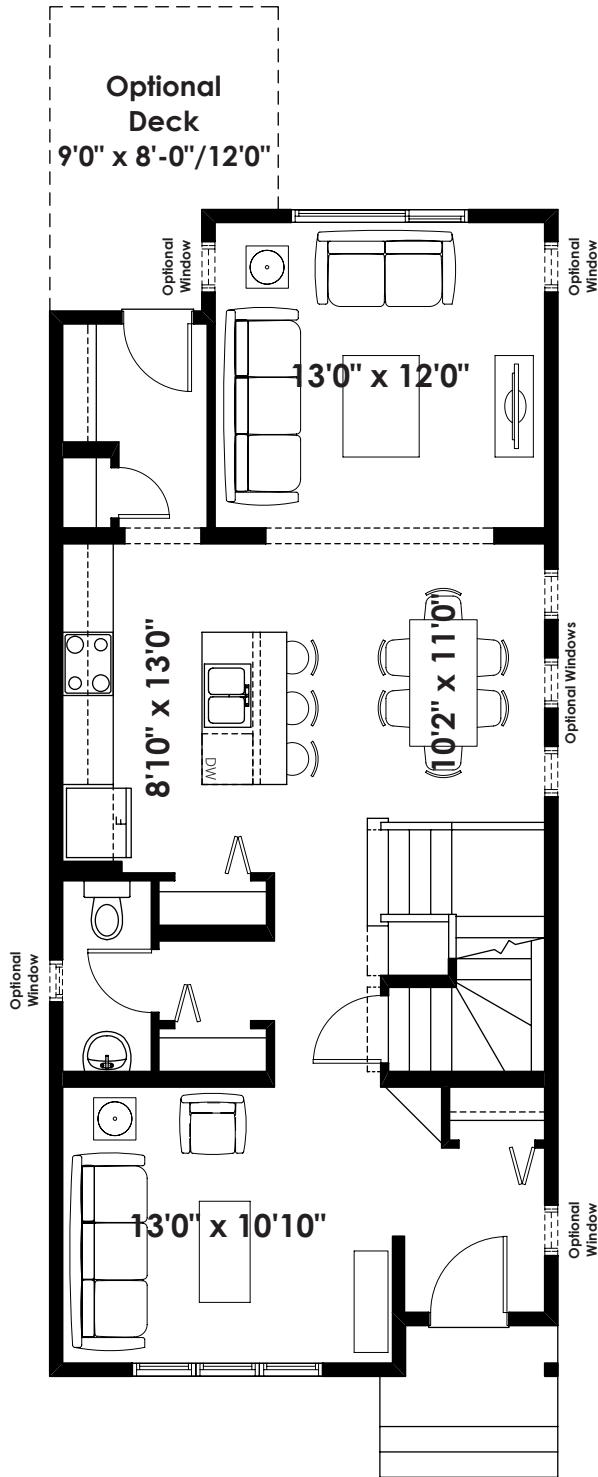
1,705+ SQ FT | 3 BED | 2.5 BATH



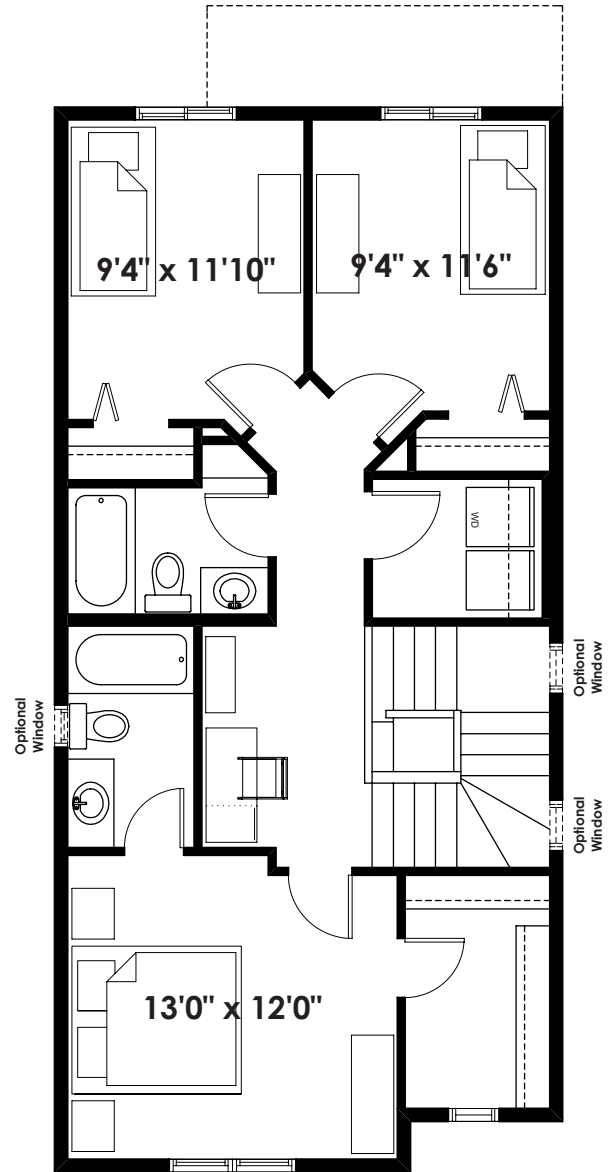
BETTER VALUE BY DESIGN
SINCE 1978 | HOMESBYAVI.COM

Homes by **AVI**

BASE FLOOR PLAN

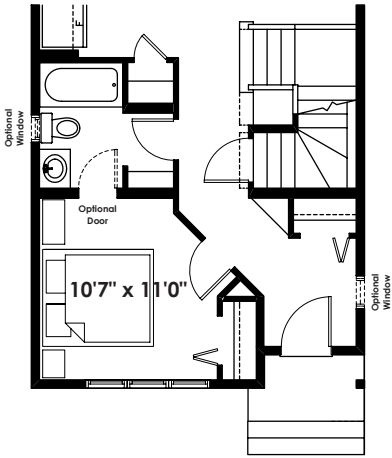


MAIN
884 SQ FT

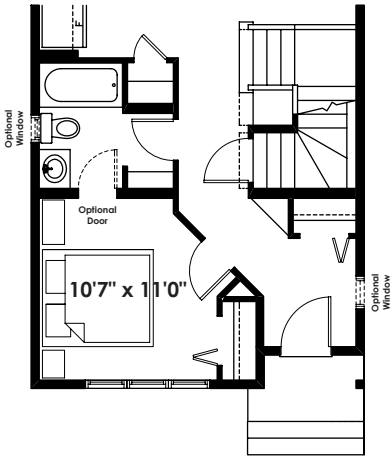


UPPER
821 SQ FT

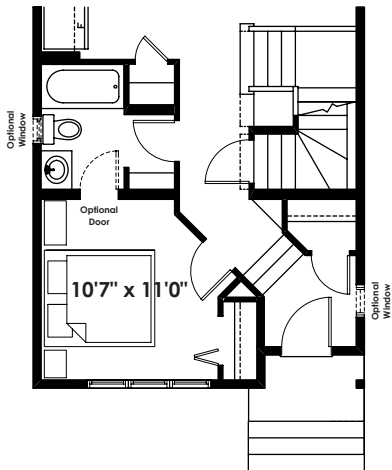
FLOOR PLAN OPTIONS



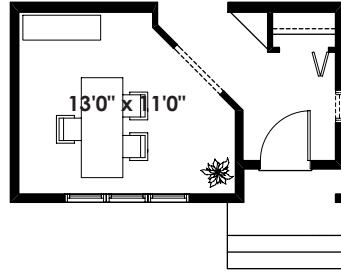
Optional Bedroom & 3 Piece Bathroom
(Adds 0 Sq. Ft. to Main Floor)



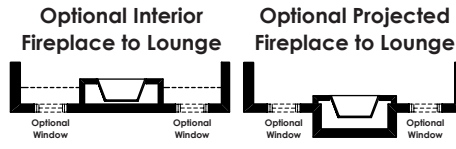
Optional Bedroom & 3 Piece Bathroom
(Adds 0 Sq. Ft. to Main Floor)



Optional Bedroom & 3 Piece Bathroom for Southfork Dropped Foyer
Adds 0 S . Ft. to Main Floor

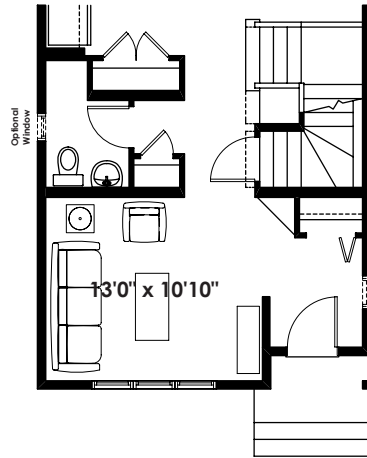


Optional Arch to Study
(Adds 0 Sq. Ft. to Main Floor)

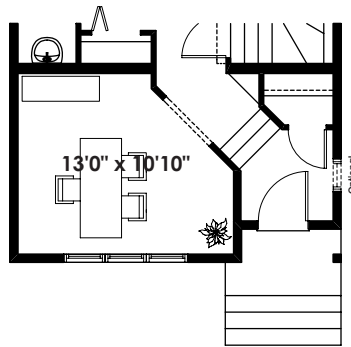


Optional Interior Fireplace to Lounge

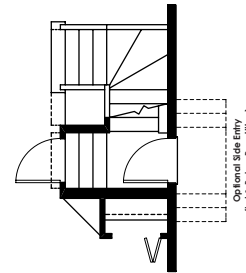
Optional Projected Fireplace to Lounge



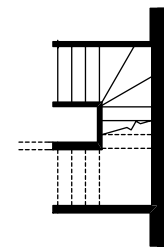
Optional Half Bath & Pantry
(Adds 0 Sq. Ft. to Main Floor)



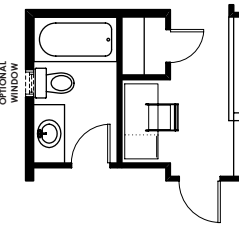
Optional Arch to Study for Dropped Foyer
(Southfork Only)
(Adds 0 Sq. Ft. to Main Floor)



Partial Main Floor Plan for Optional Side Entry
(Stair Winders Reversed)

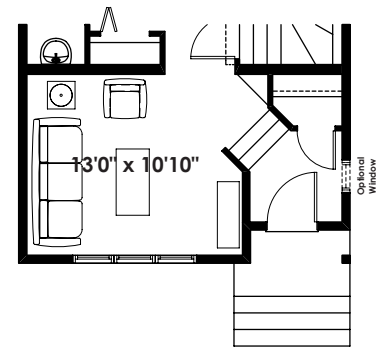


Partial Foundation Plan for Optional Side Entry
(Stair Winders Reversed)



Optional Linen Closet
(Adds 0 Sq. Ft. to Second Floor)

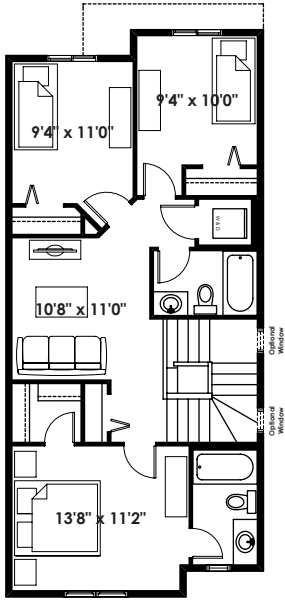
ONLY AVAILABLE WITH STANTON SECOND FLOOR PLAN



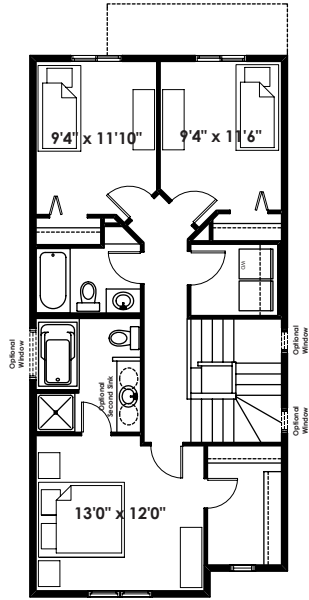
Dropped Entry
(Southfork Only)
(Adds 0 Sq. Ft. to Main Floor)

ADDITIONAL
OPTIONS

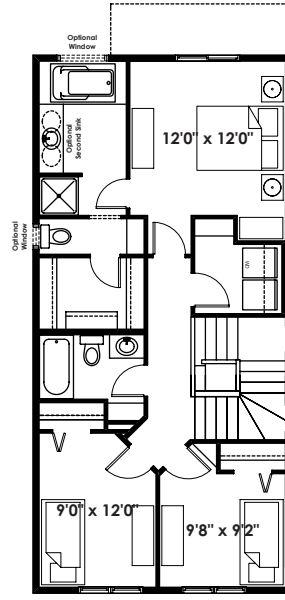
FLOOR PLAN OPTIONS



HARDY
Second Floor Plan
(Adds 21 Sq. Ft. to Second Floor)



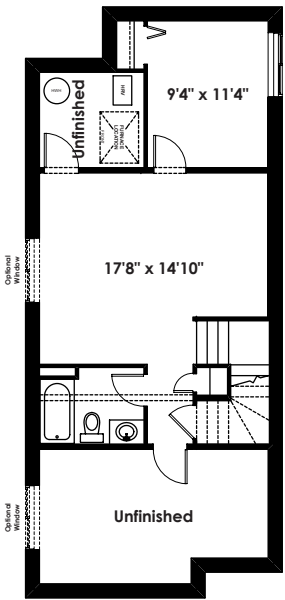
MURDOCH
Second Floor Plan
(Adds 0 Sq. Ft. to Second Floor)



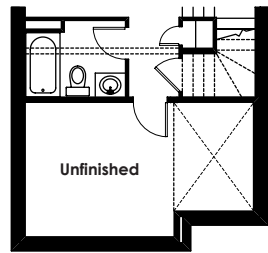
OLSEN
Second Floor Plan
(Adds 12 Sq. Ft. to Second Floor)



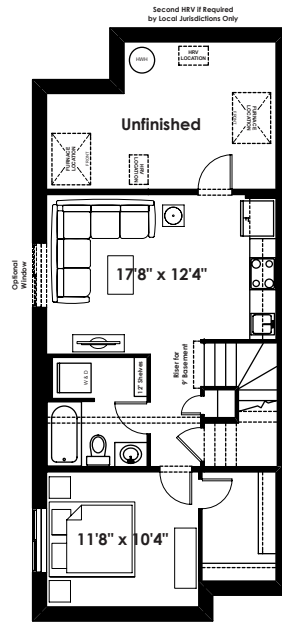
NOTE: THIS OPTIONAL SECOND FLOOR ONLY AVAILABLE WITH SELECT FLAT FRONT ELEVATIONS



GREGORY
Optional Basement Room Layout
489 Sq. Ft. (Finished)

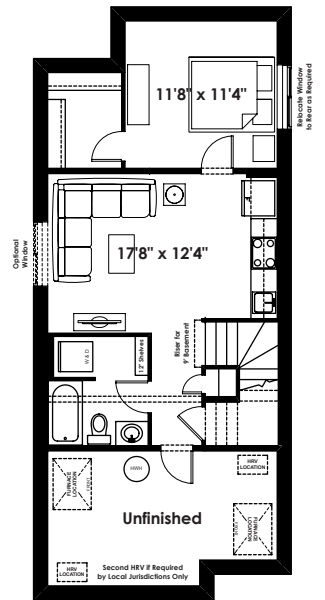


Optional Basement Room Layout (Southfork Only)
489 Sq. Ft. (Finished)



GREGORY
Optional Basement Suite Layout
551 Sq. Ft. (Finished Area; Must Add Optional Side Entry)

BASEMENT SUITE MAY NOT CONFORM TO ALL MUNICIPALITIES. LAND USE BY-LAW & CODE MUST BE REVIEWED PRIOR TO ACCEPTANCE



GREGORY
Alternate Basement Suite Layout
554 Sq. Ft. (Finished Area; Must Add Optional Side Entry)

BASEMENT SUITE MAY NOT CONFORM TO ALL MUNICIPALITIES. LAND USE BY-LAW & CODE MUST BE REVIEWED PRIOR TO ACCEPTANCE

Prices are subject to change without notice. Actual floor plan, elevation, and square footage may not be exactly as shown. Square footage is measured to Alberta Building Code (ABC) regulations. Builder reserves the right to make changes without notice. E&OE.