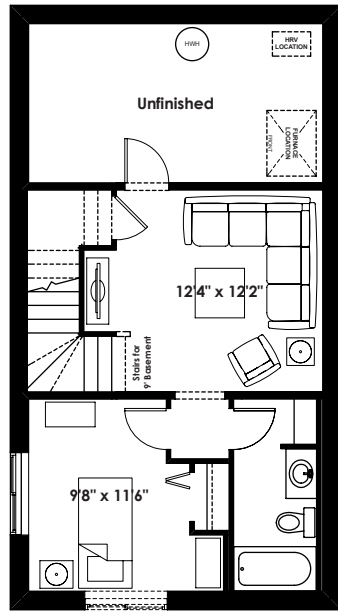


FLOOR PLAN OPTIONS

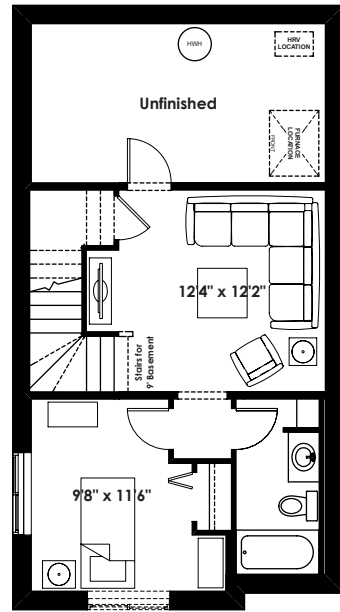
20'

THE ALEXIS

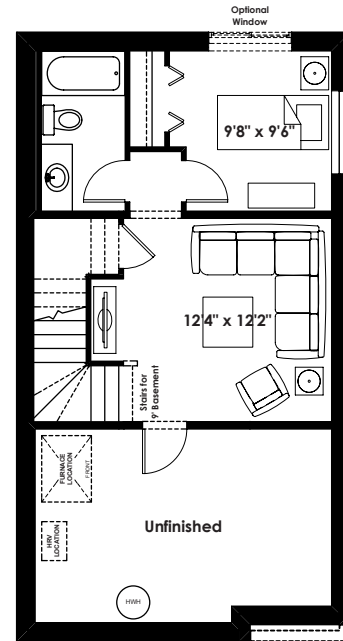
1,972+ SQ FT | 3 BED | 2.5 BATH



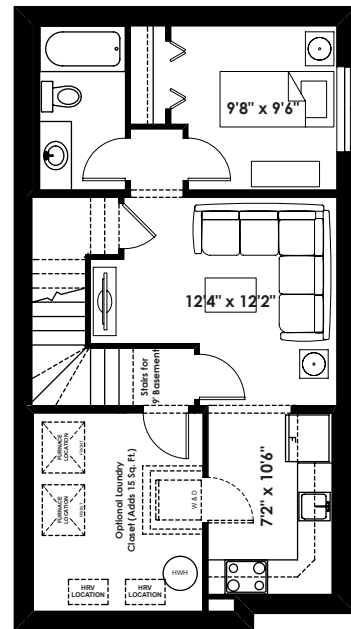
ALEXIS
Optional Basement Room Layout
for Leif Elevation
411 Sq. Ft. (Finished)



ALEXIS
Optional Basement Room Layout
for Kyle Elevation
405 Sq. Ft. (Finished)

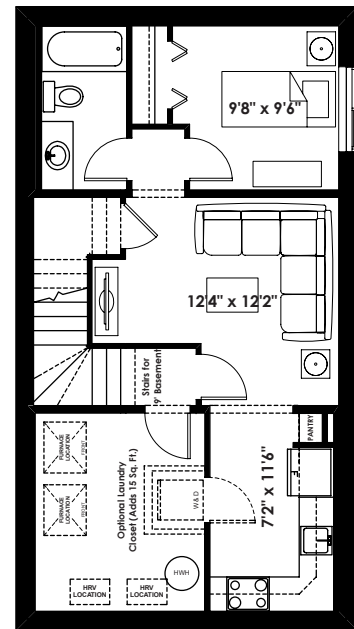


ALEXIS Alternate
Optional Basement Room Layout
for Kyle & Leif Elevations
374 Sq. Ft. (Finished)



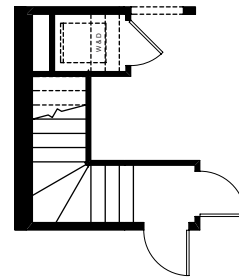
ALEXIS
Optional Basement Suite Layout
for Kyle Elevation
465 Sq. Ft. (Finished Area;
Must Add Optional Side Entry)

BASEMENT SUITE MAY NOT CONFORM
TO ALL MUNICIPALITIES;
LAND USE BY-LAW & CODE MUST BE
REVIEWED PRIOR TO ACCEPTANCE



ALEXIS
Optional Basement Suite Layout
for Leif Elevation
465 Sq. Ft. (Finished Area;
Must Add Optional Side Entry)

BASEMENT SUITE MAY NOT CONFORM
TO ALL MUNICIPALITIES;
LAND USE BY-LAW & CODE MUST BE
REVIEWED PRIOR TO ACCEPTANCE



Optional Laundry
Closet Below Stairs
in Basement Suite
for use with
9' Basement Only
(Adds 15 Sq.Ft)

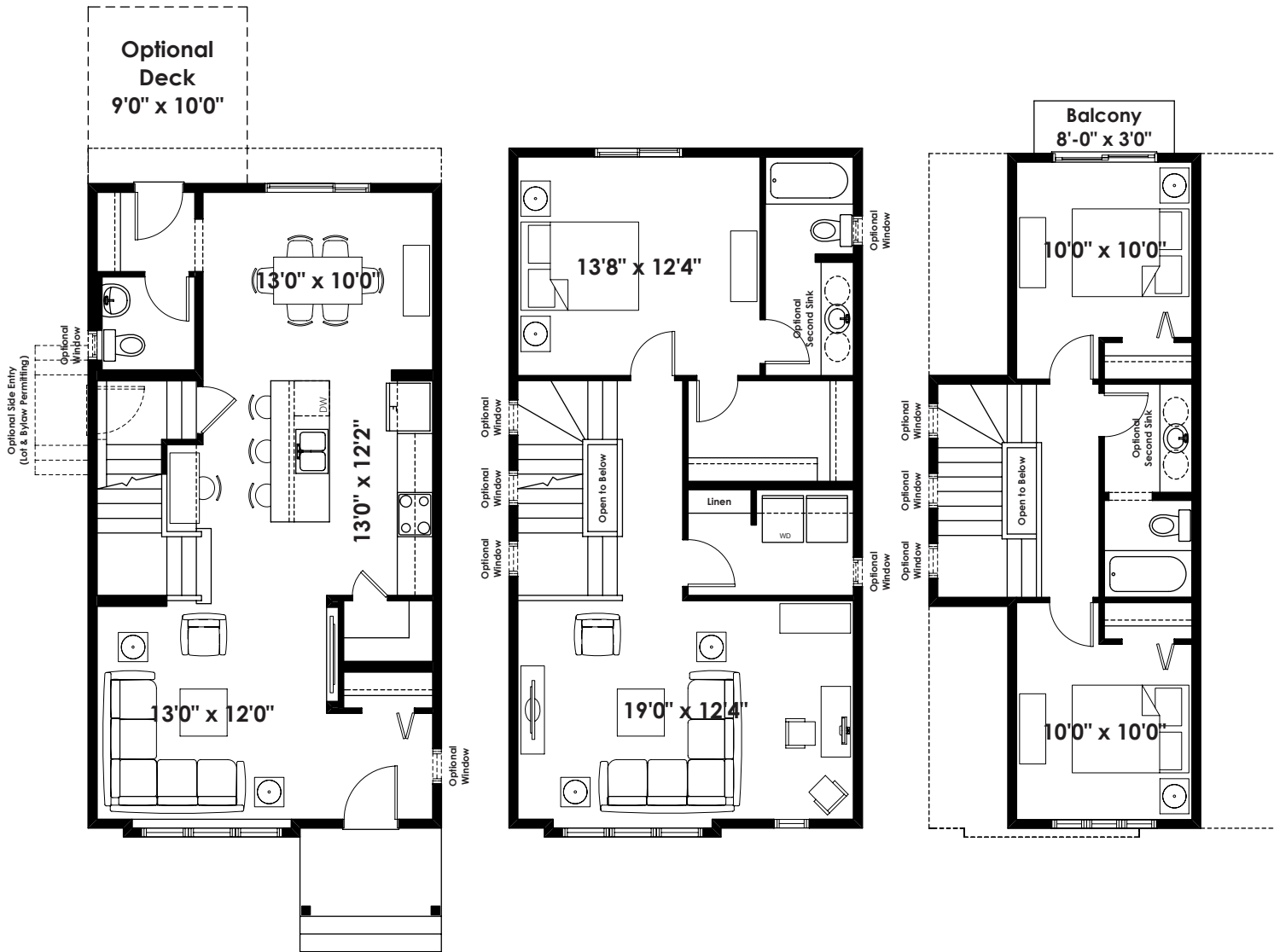
Prices are subject to change without notice. Actual floor plan, elevation, and square footage may not be exactly as shown. Square footage is measured to Alberta Building Code (ABC) regulations. Builder reserves the right to make changes without notice. E&OE.



BETTER VALUE BY DESIGN
SINCE 1978 | HOMESBYAVI.COM



BASE FLOOR PLAN

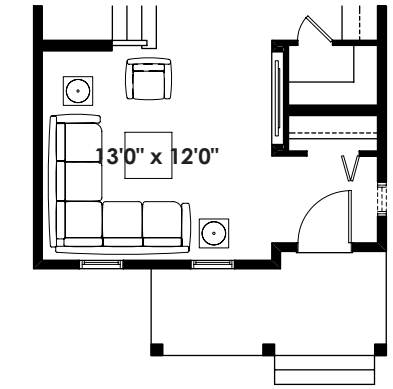


MAIN
For LEIF Elevation
730 SQ FT

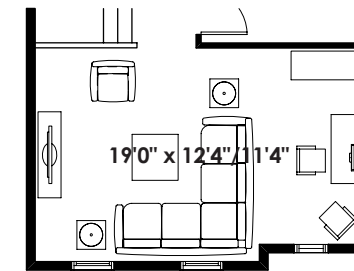
SECOND
GUNNAR for LEIF Elevation
767 SQ FT

THIRD
MADISON for LEIF Elevation
475 SQ FT

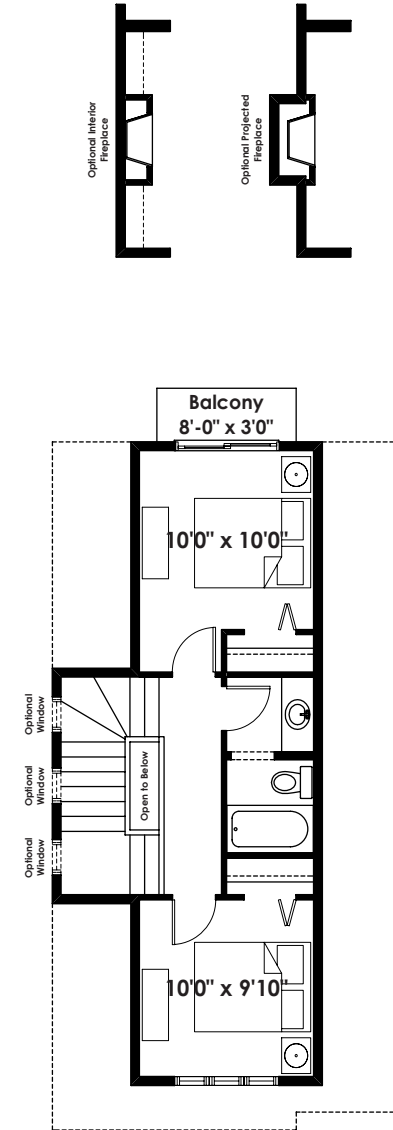
FLOOR PLAN OPTIONS



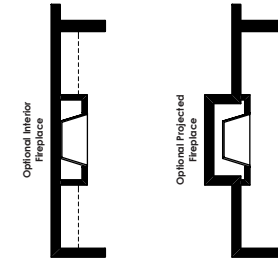
Partial ALEXIS Main Floor Plan
for Kyle Elevation
(Removes 6 Sq. Ft. from Main Floor)



Partial GUNNAR Second Floor Plan
for Kyle Elevation
(Removes 11 Sq. Ft. from Second Floor)



MADSEN Third Floor Plan
for Kyle Elevation
(Removes 28 Sq. Ft. from Third Floor)



ADDITIONAL
OPTIONS