

24'

THE ELLISON

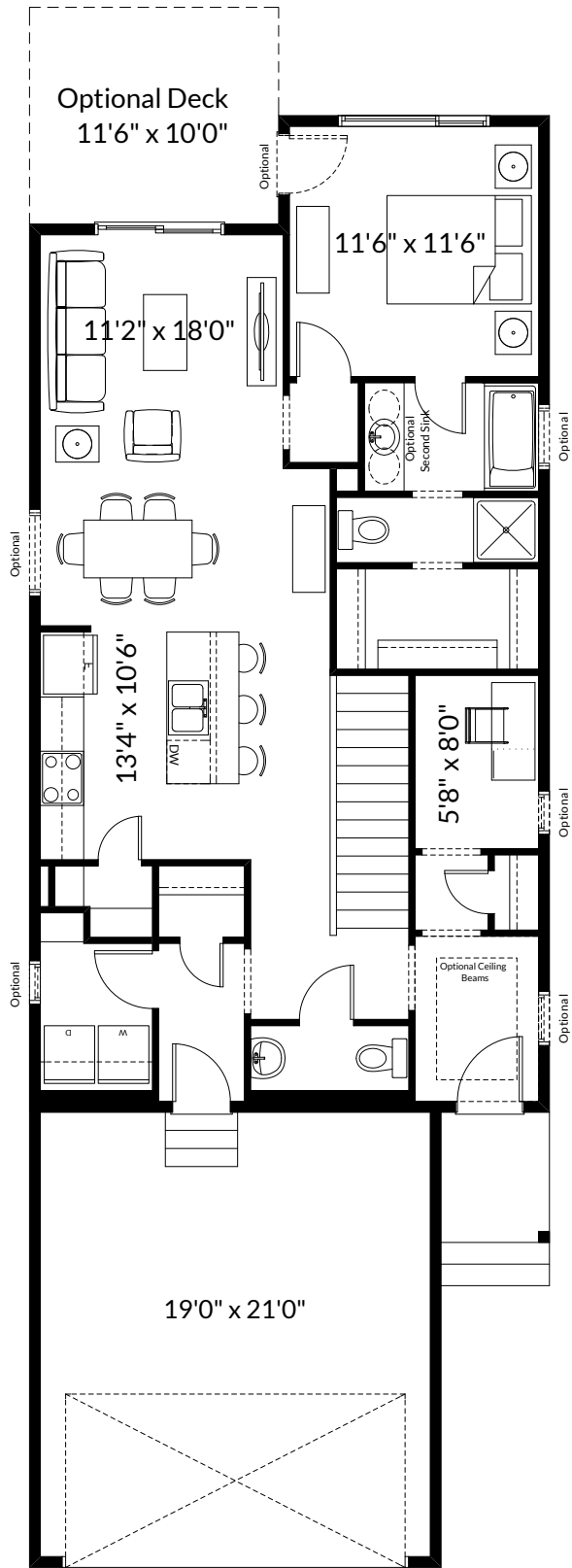
1,047+ SQ FT | 1 BED | 1.5 BATH



BETTER VALUE BY DESIGN
SINCE 1978 | HOMESBYAVI.COM

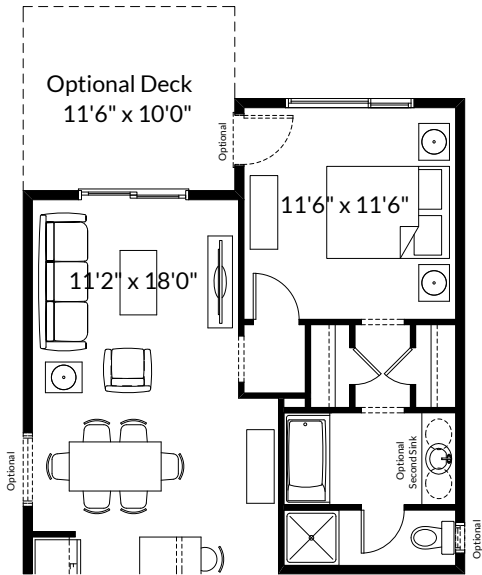
Homes by **AVI**

BASE FLOOR PLAN



MAIN
1,047 SQ FT

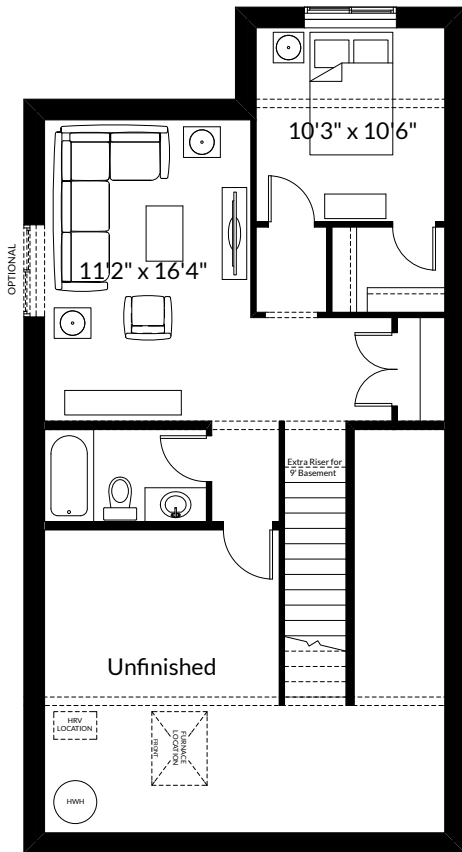
FLOOR PLAN OPTIONS



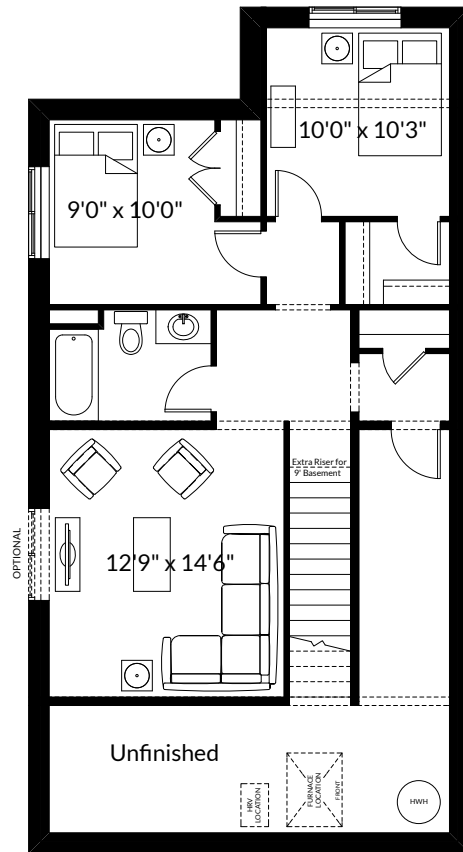
Partial Main Floor Plan with
Optional Ensuite Layout
(Adds 0 Sq. Ft. to Main Floor)



Partial Main Floor Plan for
Livingston Elevations
(Adds 0 Sq. Ft. to Main Floor)



Optional Basement Room Layout
530 Sq. Ft. (Finished Area)



Optional Alternate Two Bedroom
Basement Room Layout 660 Sq. Ft. (Finished Area)



Prices are subject to change without notice. Actual floor plan, elevation, and square footage may not be exactly as shown. Square footage is measured to Alberta Building Code (ABC) regulations. Builder reserves the right to make changes without notice. E&OE.

