

24'

THE JEFFERSON

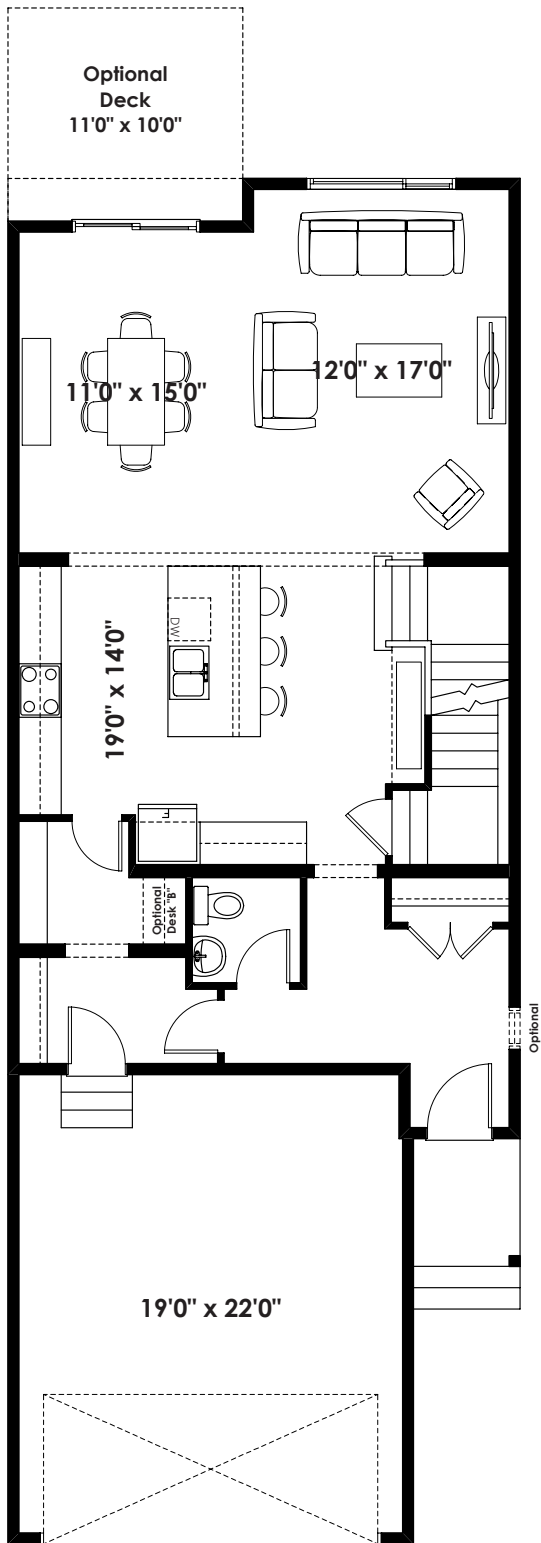
2,343+ SQ FT | 3 BED | 2.5 BATH



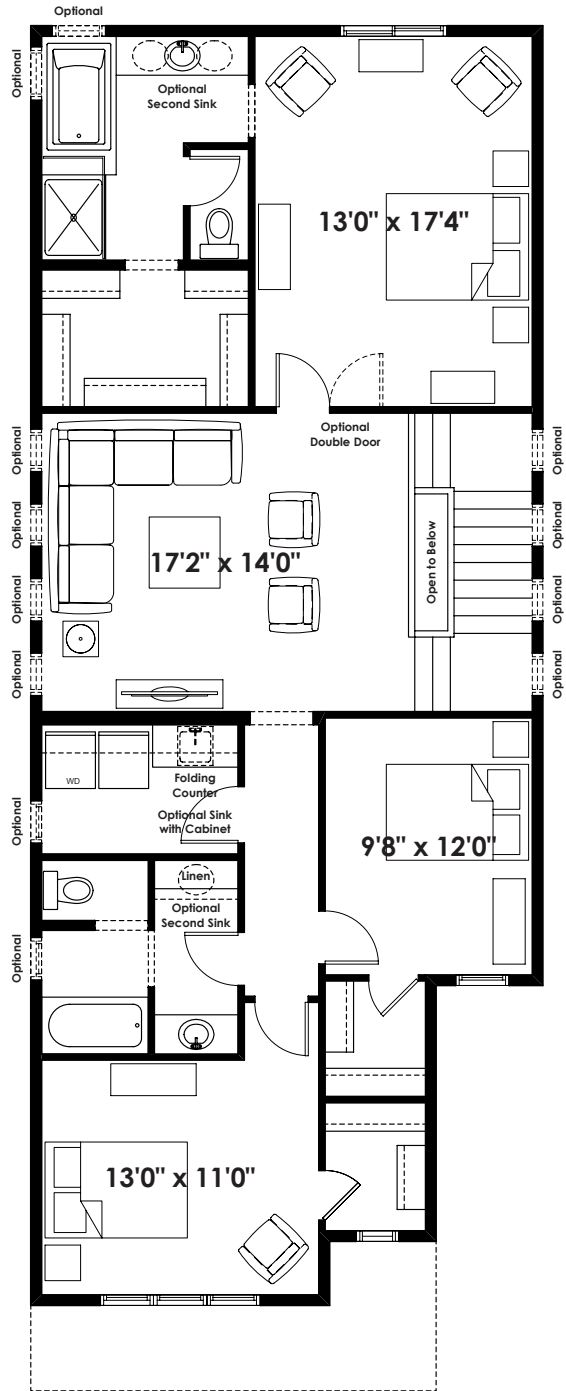
BETTER VALUE BY DESIGN
SINCE 1978 | HOMESBYAVI.COM

Homes by **AVI**

BASE FLOOR PLAN

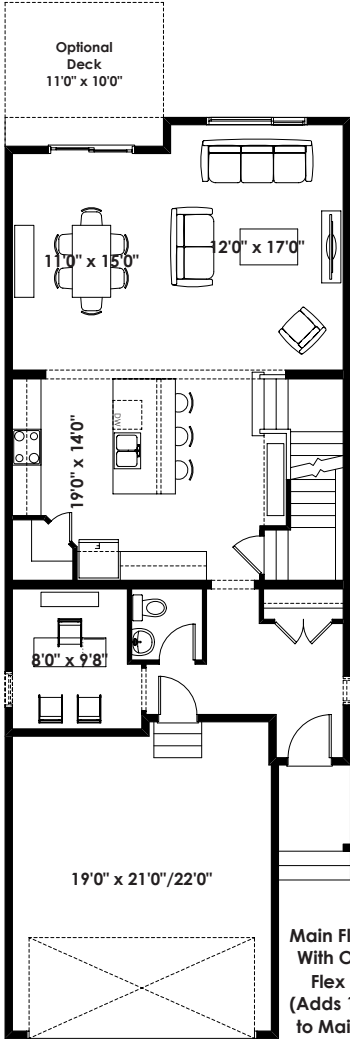


MAIN
1,003 SQ FT

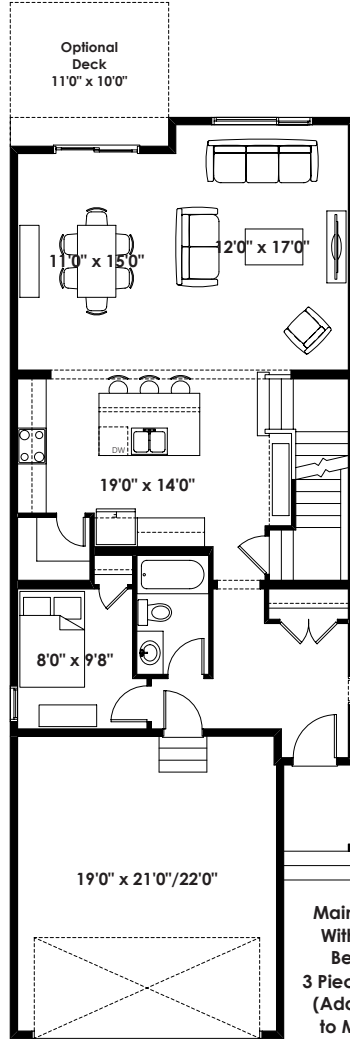


UPPER
1,340 SQ FT

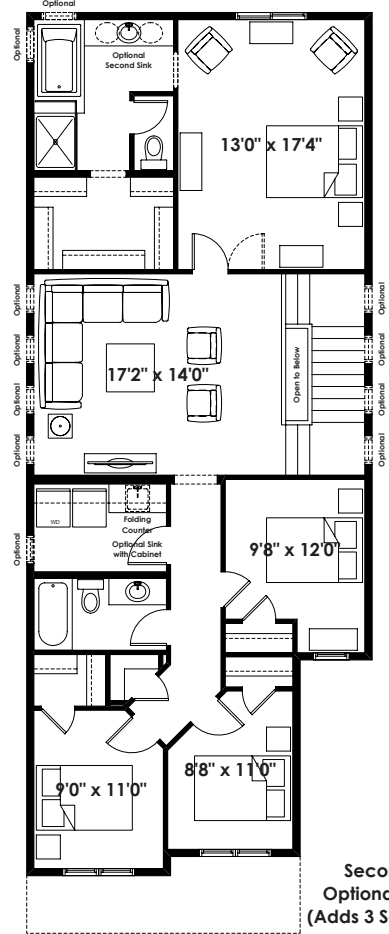
FLOOR PLAN OPTIONS



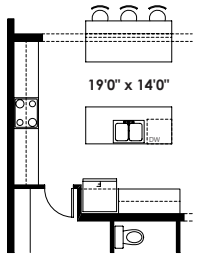
Main Floor Plan
With Optional
Flex Room
(Adds 10 Sq. Ft.
to Main Floor)



Main Floor Plan
With Optional
Bedroom &
3 Piece Bathroom
(Adds 18 Sq. Ft.
to Main Floor)



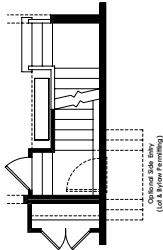
Second Floor Plan with
Optional 4 Bedroom Layout
(Adds 3 Sq. Ft. to Second Floor)



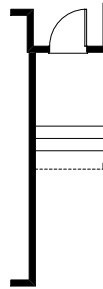
Partial Main Floor Plan with
Optional Kitchen Islands
(Adds 0 Sq. Ft. to Main Floor)



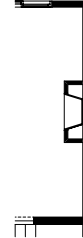
Partial Main Floor Plan with
Optional Finished Stair to Basement
(Adds 0 Sq. Ft. to Main Floor)



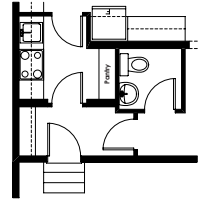
Partial Main Floor Plan
with Optional Side Entry
(Adds 0 Sq. Ft. to Main Floor)



Partial Main Floor Plan for
Lanark & Sunset Ridge Elevations
(Adds 0 Sq. Ft. to Main Floor)



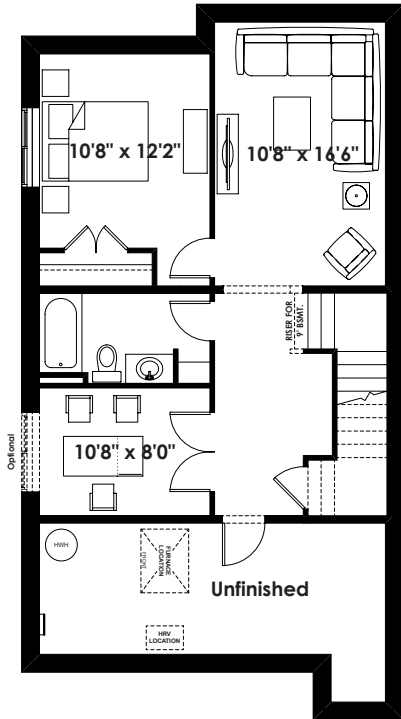
Partial Main Floor Plan with
Optional Interior Fireplace
(Adds 0 Sq. Ft. to Main Floor)



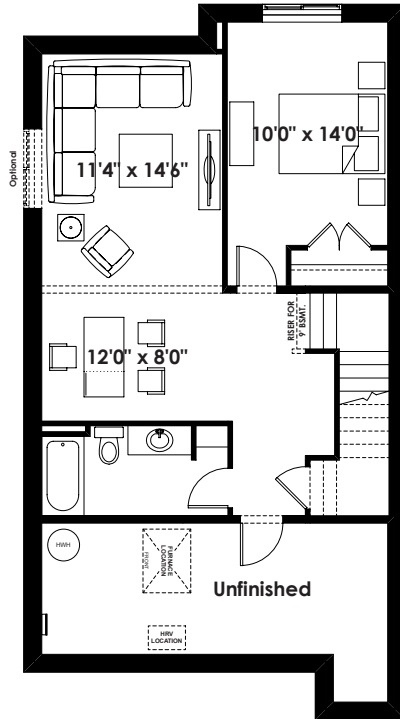
Partial Main Floor Plan with
Optional Spice Kitchen
(Adds 0 Sq. Ft. to Main Floor)

ADDITIONAL
OPTIONS

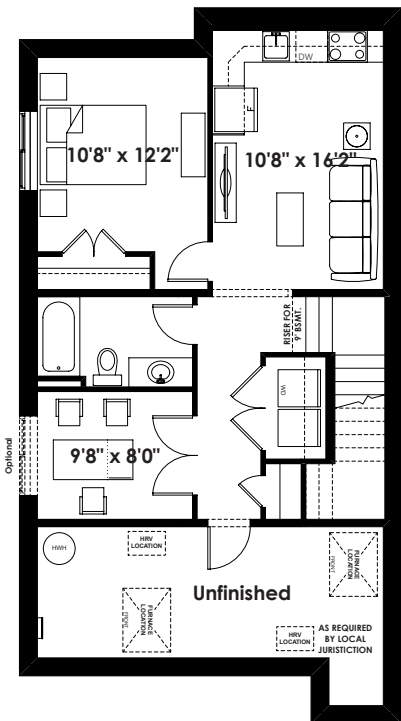
FLOOR PLAN OPTIONS



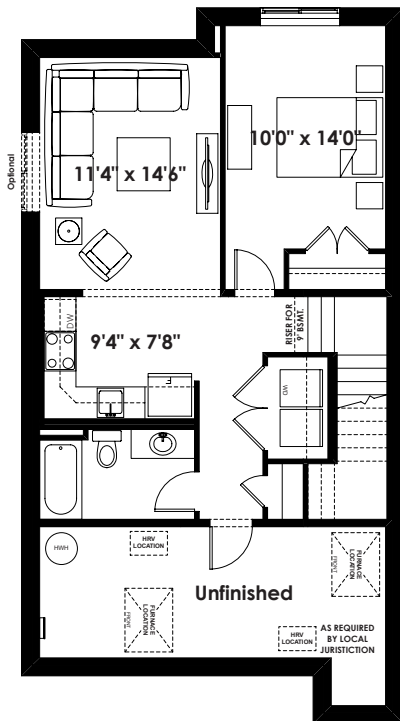
Optional Basement Room Layout
638 Sq. Ft. (Finished Area)



Alternate Optional Basement Room Layout
638 Sq. Ft. (Finished Area)



Optional Basement Suite Layout
638 Sq. Ft. (Finished Area)



Alternate Optional Basement Suite Layout
638 Sq. Ft. (Finished Area)

Prices are subject to change without notice. Actual floor plan, elevation, and square footage may not be exactly as shown. Square footage is measured to Alberta Building Code (ABC) regulations. Builder reserves the right to make changes without notice. E&OE.