

24'

# THE HUGHES

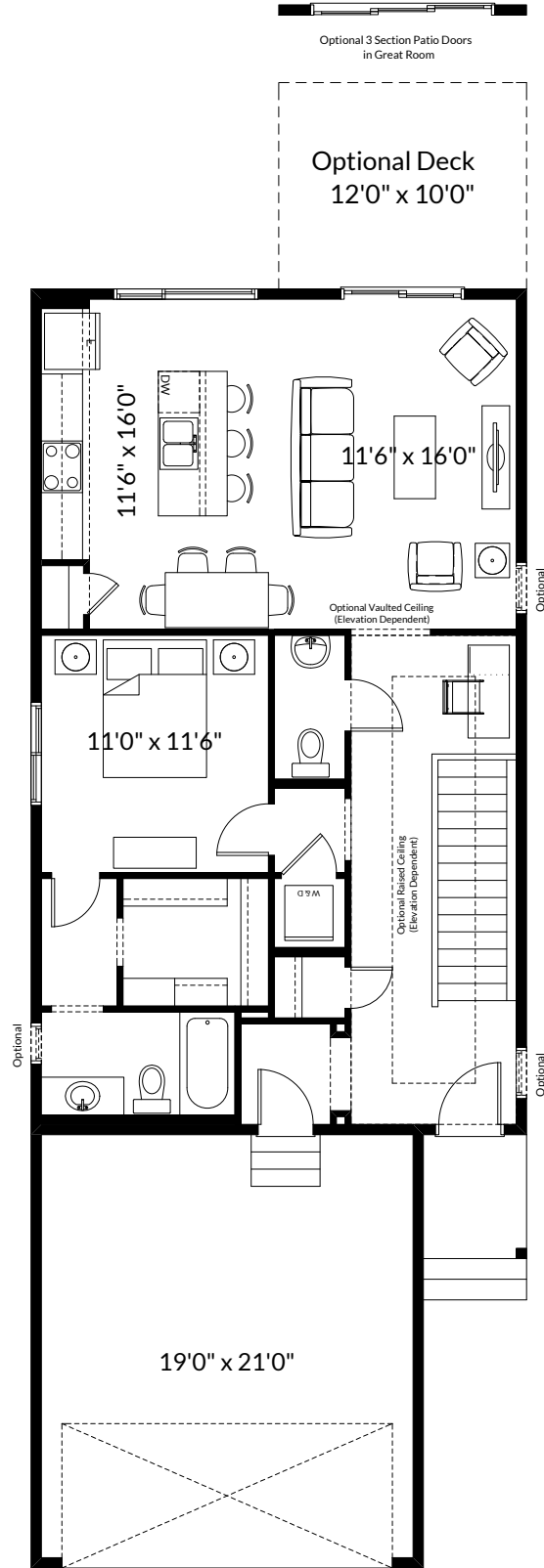
984+ SQ FT | 1 BED | 1.5 BATH



BETTER VALUE BY DESIGN  
SINCE 1978 | HOMESBYAVI.COM

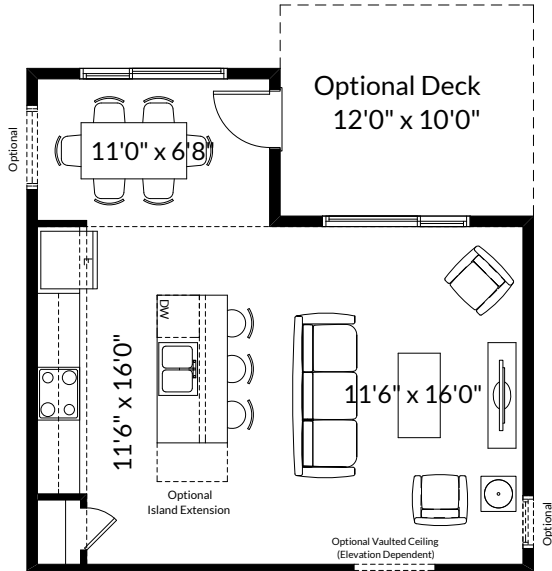
Homes by **AVI**

# BASE FLOOR PLAN

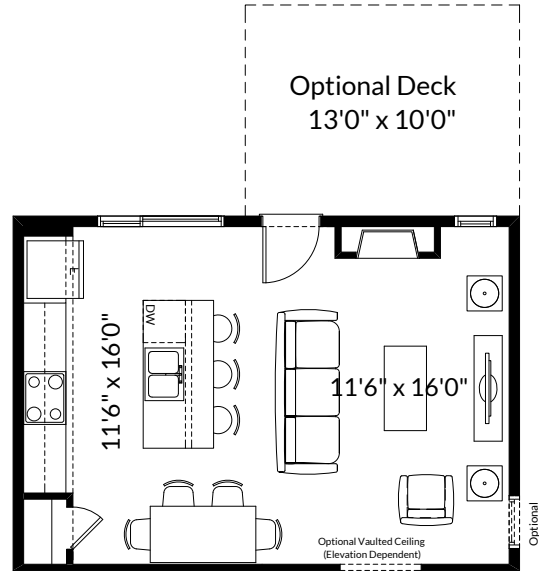


**MAIN**  
984 SQ FT

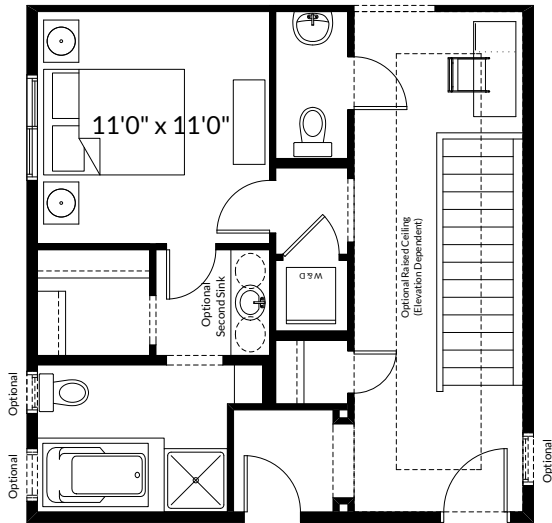
# FLOOR PLAN OPTIONS



Partial Main Floor Plan  
with Optional Nook Extension  
(Adds 84 Sq. Ft. to Main Floor)



Partial Main Floor Plan with  
Optional Interior Fireplace to Great Room  
(Adds 1'-0" in Width to Optional Deck;  
Adds 0 Sq. Ft. to Main Floor)



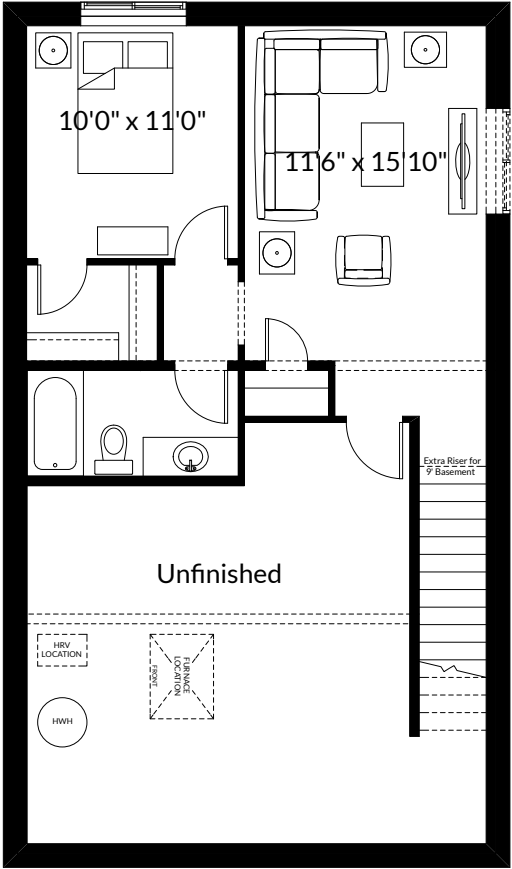
Partial Main Floor Plan  
with Optional Upgraded Ensuite  
(Adds 0 Sq. Ft. to Main Floor)



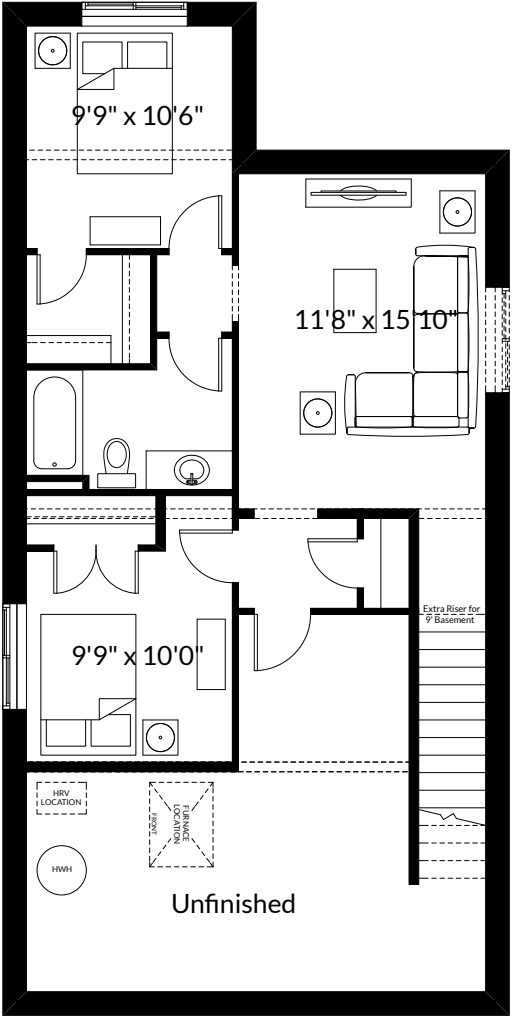
Partial Main Floor Plan for  
Livingston Elevations  
(Adds 0 Sq. Ft. to Main Floor)

ADDITIONAL  
OPTIONS

# FLOOR PLAN OPTIONS



Optional Basement Room Layout  
480 Sq. Ft. (Finished Area)



Optional Basement Room Layout for  
use with Optional Nook Extension  
640 Sq. Ft. (Finished Area)

Prices are subject to change without notice. Actual floor plan, elevation, and square footage may not be exactly as shown. Square footage is measured to Alberta Building Code (ABC) regulations. Builder reserves the right to make changes without notice. E&OE.