

20'

THE VICTORIA

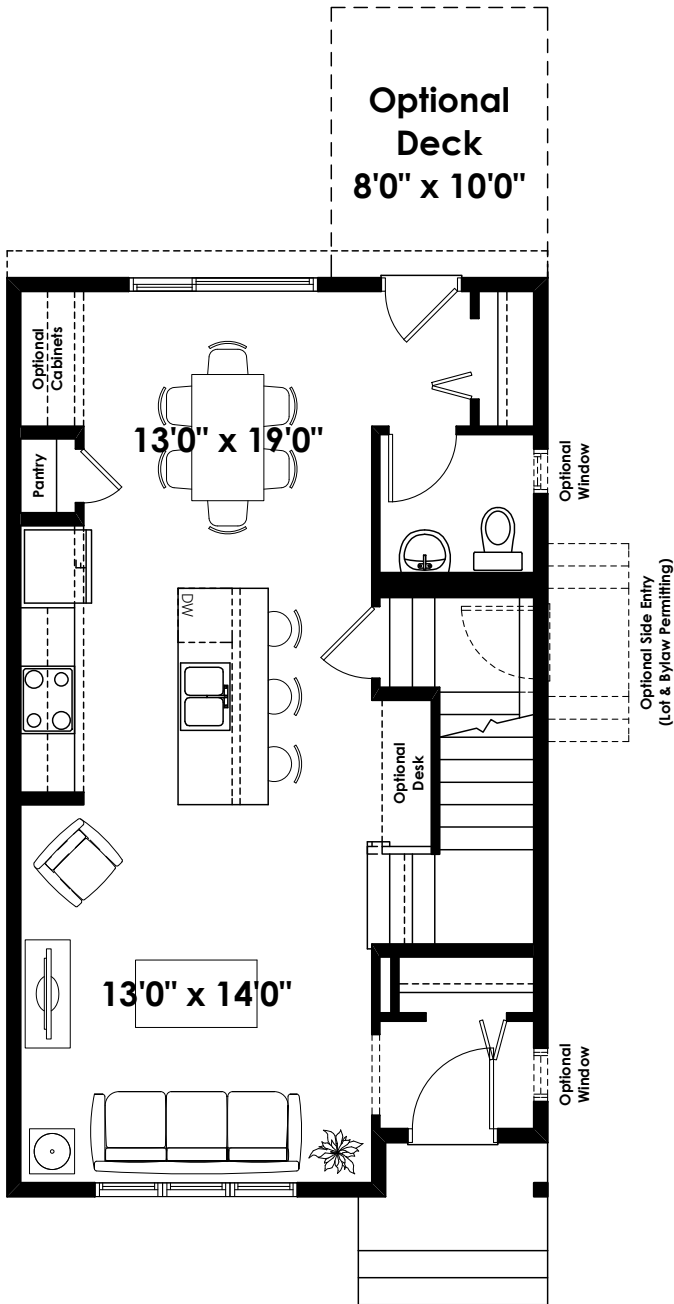
1,356+ SQ FT | 3 BED | 2.5 BATH



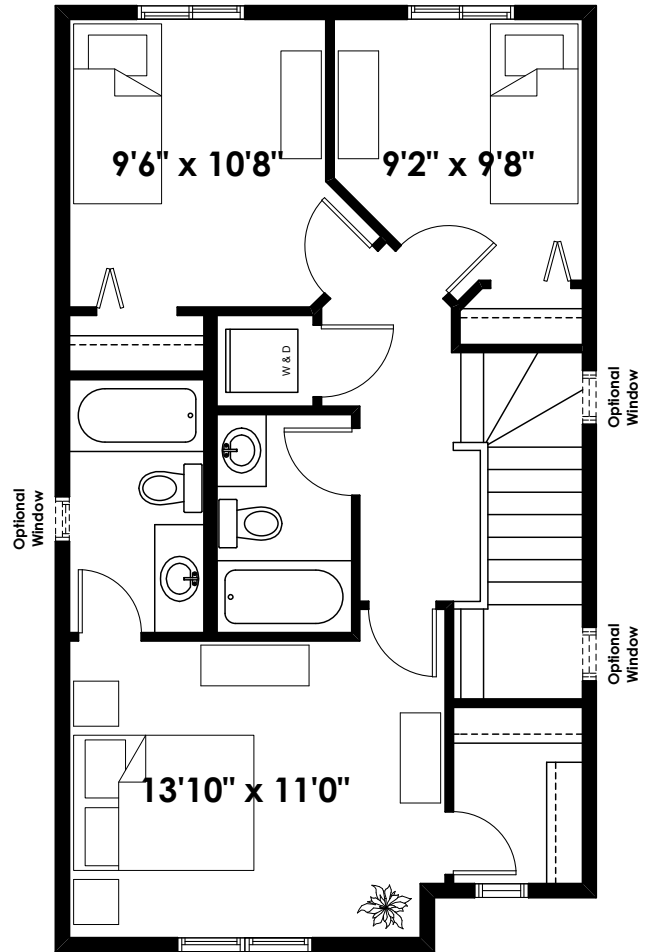
BETTER VALUE BY DESIGN
SINCE 1978 | HOMESBYAVI.COM

Homes by **AVI**

BASE FLOOR PLAN

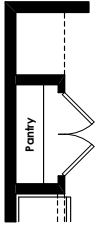


MAIN
668 SQ FT

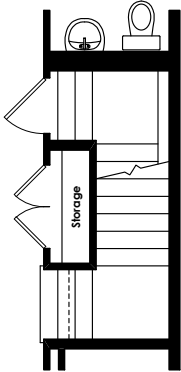


UPPER
688 SQ FT

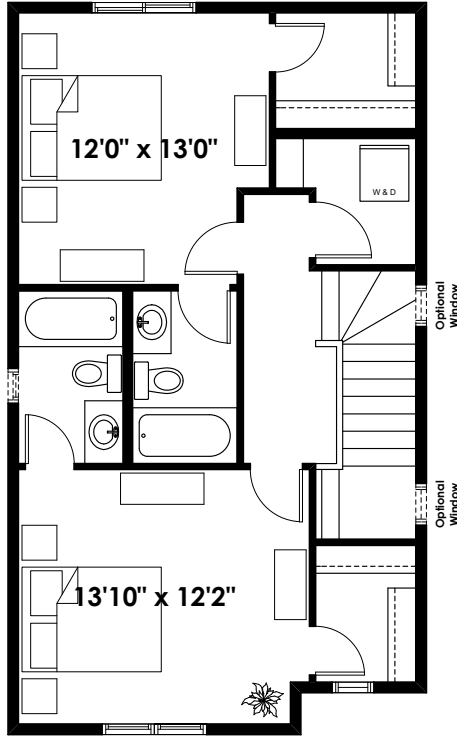
FLOOR PLAN OPTIONS



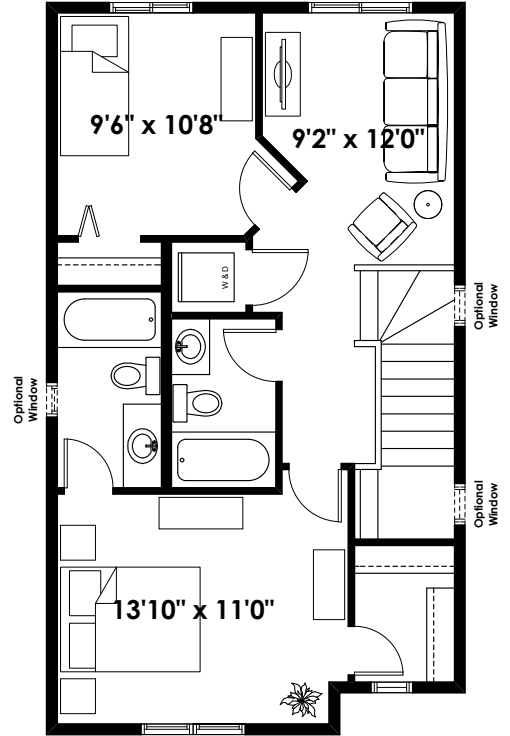
Optional Extended Pantry
(Adds 0 Sq. Ft. to Main Floor)



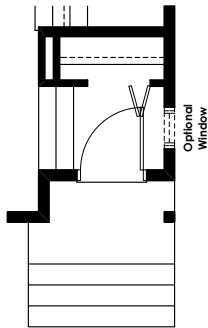
Optional Storage Closet at Stairs
(Adds 0 Sq. Ft. to Main Floor)



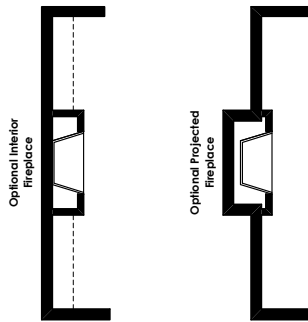
Halliwell
Second Floor Plan
688 Sq. Ft.



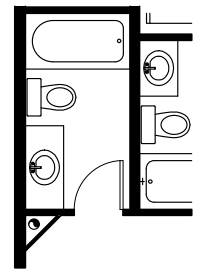
Chisholm
Second Floor Plan
688 Sq. Ft.



Dropped Entry
(Southfork Only)
(Adds 0 Sq. Ft. to Main Floor)



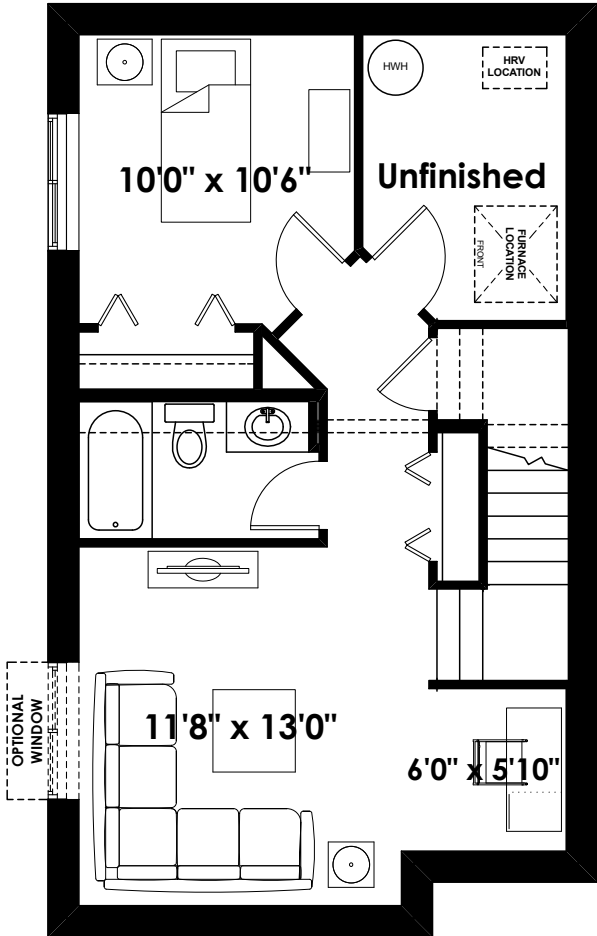
Optional Fireplaces
(Adds 0 Sq. Ft. to Main Floor)



Corner Box-out & Ensuite Door Location for Optional Interior Fireplace
(as Required)

ADDITIONAL
OPTIONS

FLOOR PLAN OPTIONS



VICTORIA

**Future Basement Room Layout
459 Sq. Ft. (Finished Area;
(Not Included in Contract)**

Prices are subject to change without notice. Actual floor plan, elevation, and square footage may not be exactly as shown. Square footage is measured to Alberta Building Code (ABC) regulations. Builder reserves the right to make changes without notice. E&OE.